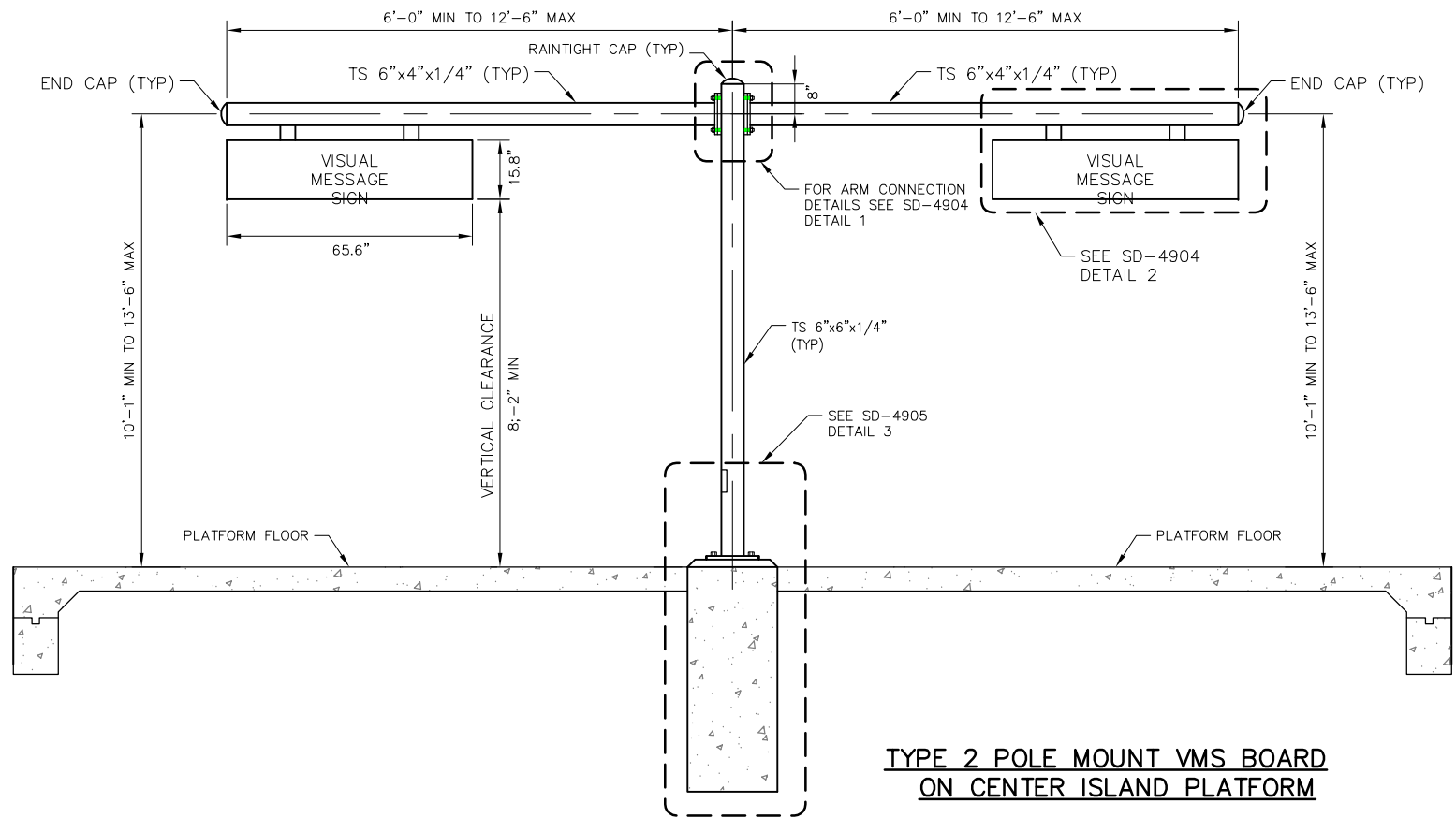


**TYPE 1 POLE MOUNT VMS BOARD
ON OUTBOARD PLATFORM**



**TYPE 2 POLE MOUNT VMS BOARD
ON CENTER ISLAND PLATFORM**

NOTES:

1. SEE SD-4905 FOR FOUNDATION DETAILS.
2. SEE SD-4904 FOR ARM CONNECTION DETAILS
3. ALL STEEL MEMBERS AND ACCESSORIES SHALL BE HOT DIP GALVANIZED AFTER FABRICATION WITH HEAVY DUTY EXTERIOR PAINT FINISH.

PENINSULA CORRIDOR JOINT POWERS BOARD

STANDARD DRAWINGS

REV	DATE	BY	CHK	APP	DESCRIPTION

APPROVED BY:
Bernard Anzures *Steph Chen*
 ENGINEERING MANAGER DEPUTY DIRECTOR OF ENGINEERING



**STATION COMMUNICATIONS
COMMUNICATION EQUIPMENT
VISUAL MESSAGE SIGN BOARD
POLE MOUNT**

CADD FILE NO.: SD-4903	
REV 0	DATE 093011
STATION COMMS	
STANDARD NO.: SD-4903	