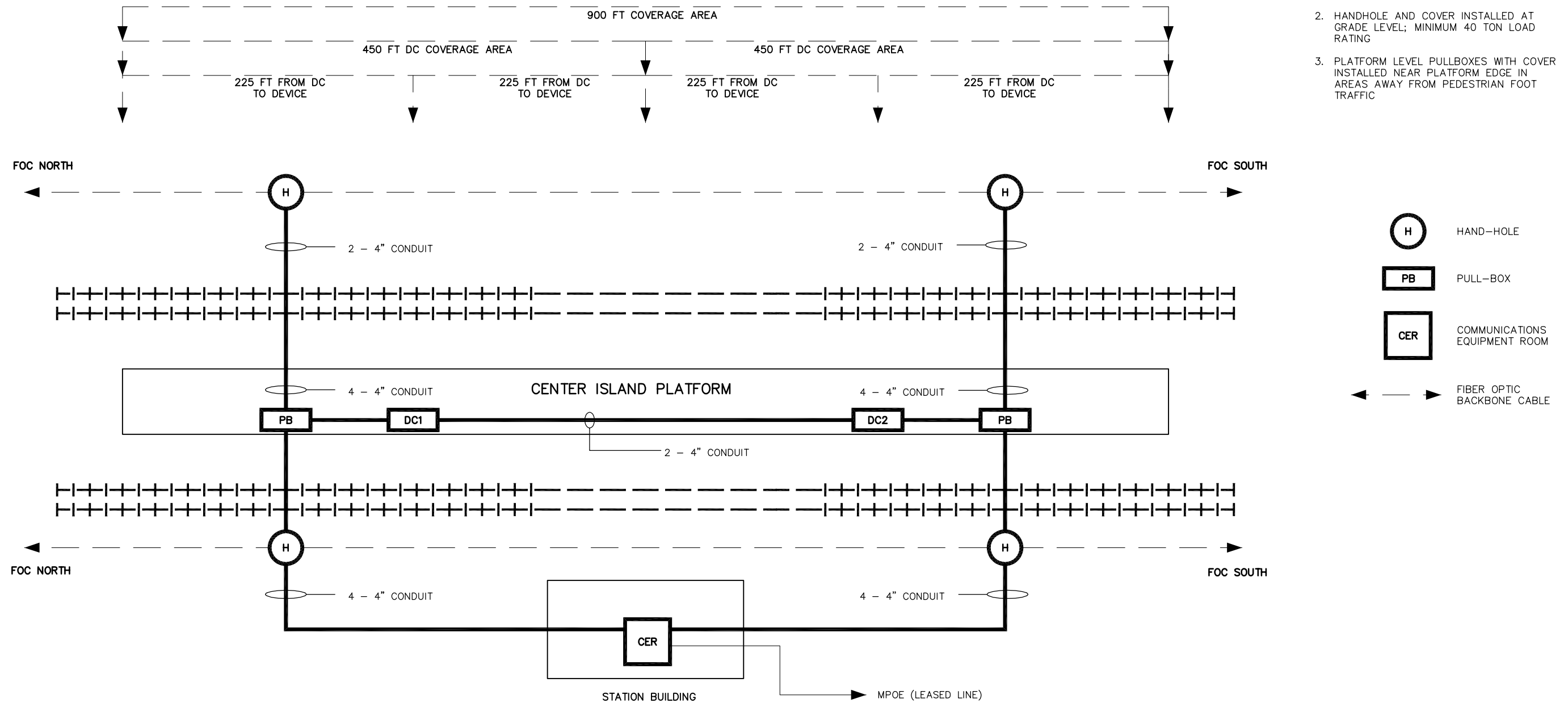


NOTES:

1. INSTALL FOUR (4) 1" INNERDUCTS PER 4" CONDUIT WITH PULL STRING
2. HANDHOLE AND COVER INSTALLED AT GRADE LEVEL; MINIMUM 40 TON LOAD RATING
3. PLATFORM LEVEL PULLBOXES WITH COVER INSTALLED NEAR PLATFORM EDGE IN AREAS AWAY FROM PEDESTRIAN FOOT TRAFFIC




REV	DATE	BY	CHK	APP	DESCRIPTION

PENINSULA CORRIDOR JOINT POWERS BOARD

APPROVED BY:

Bernard Anzures *Steph Chen*

ENGINEERING MANAGER DEPUTY DIRECTOR OF ENGINEERING



1250 San Carlos Avenue
San Carlos, CA 94070

STANDARD DRAWINGS

STATION COMMUNICATIONS
SUPPORTING SYSTEM AND OTHERS
MAIN CONDUIT PLAN
CENTER ISLAND PLATFORM

CADD FILE NO.: SD-4831	
REV 0	DATE 093011
STATION COMMS	
STANDARD NO.: SD-4831	