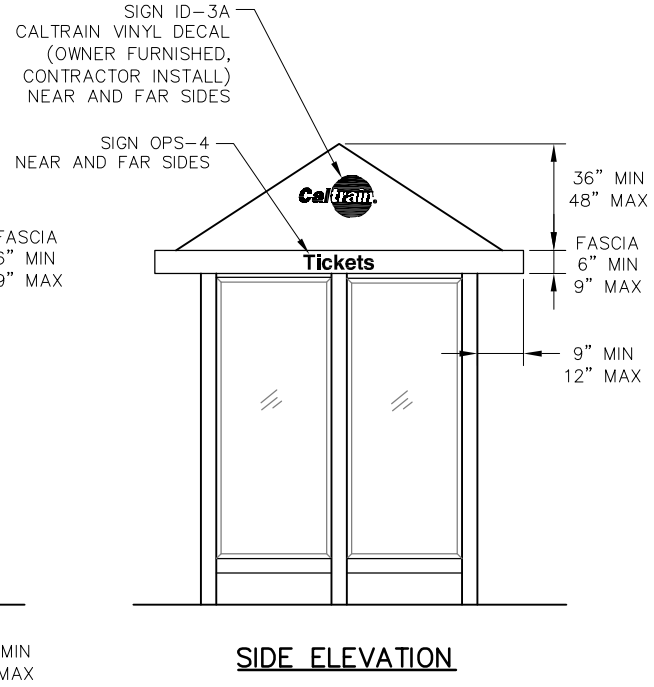


REAR ELEVATION



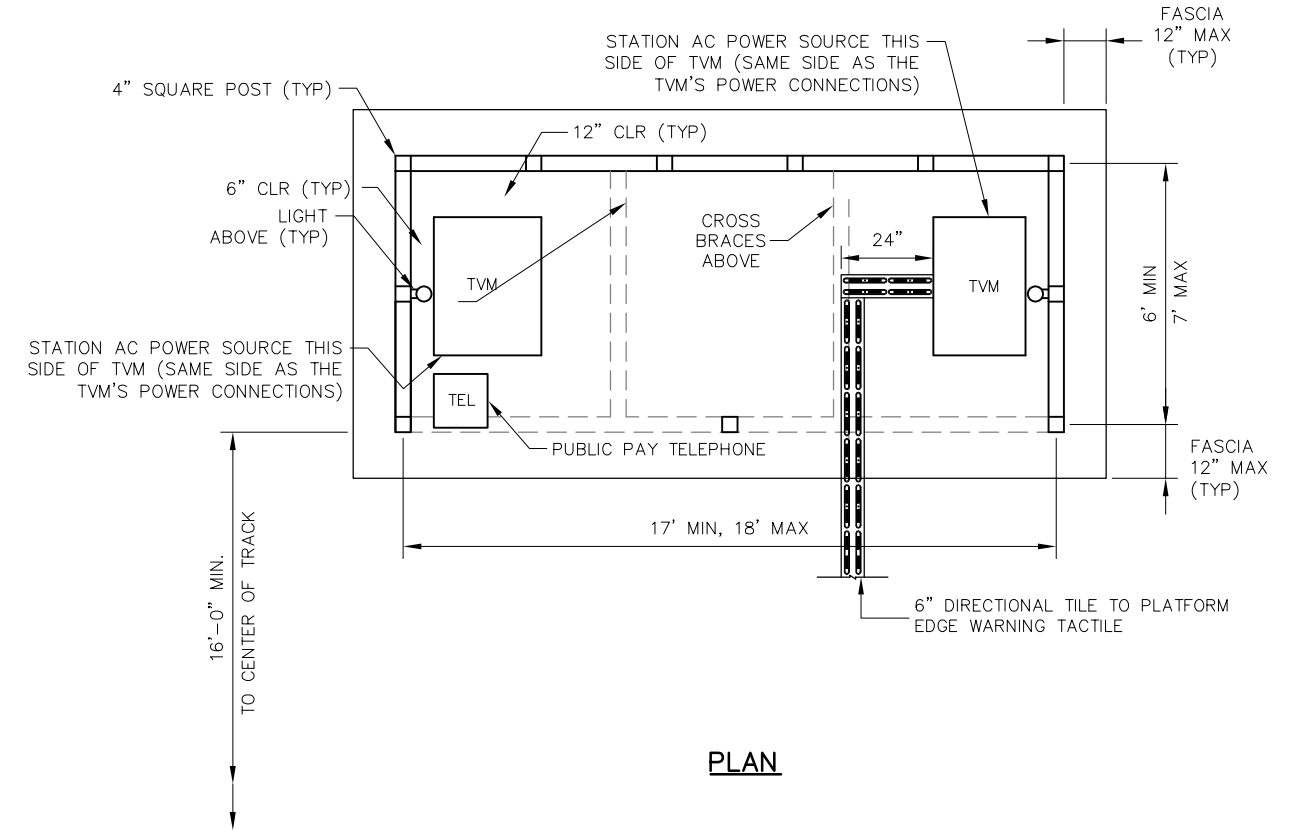
SIDE ELEVATION



FRONT ELEVATION

NOTES:

1. STRUCTURAL FRAMING MEMBERS AND ROOF SHALL BE DARK BRONZE POWDER COATED ALUMINUM
2. LIGHT SHALL BE LOW VOLTAGE 20 WATT WHITE LED WITH PHOTOCELL
3. POSTS ARE SECURED IN POST SLEEVES (BOLTED ON PLATFORMS). SLEEVES ARE SAME COLOR AS POSTS. GALVANIZED BOLTS, NUTS AND WASHERS.
4. FOR SIGNS, SEE SD-3300
5. THE FOOTPRINT FOR THE UNITS SHALL BE LEVEL AND FLUSH WITH THE PLATFORM FLOOR. NO PEDESTRIAN IS REQUIRED



PLAN

REV	DATE	BY	CHK	APP	DESCRIPTION	REV	DATE	BY	CHK	APP	DESCRIPTION

PENINSULA CORRIDOR JOINT POWERS BOARD

APPROVED BY:




ENGINEERING MANAGER DEPUTY DIRECTOR OF ENGINEERING



1250 San Carlos Avenue
 San Carlos, CA 94070

STANDARD DRAWINGS

STATIONS AND FACILITIES
SHELTERS AND AMENITIES
TYPICAL TVM SHELTER
ON OUTBOARD PLATFORM

CADD FILE NO.: SD-3202

REV	DATE
0	093011

STATIONS & FACILITIES

STANDARD NO.: SD-3202