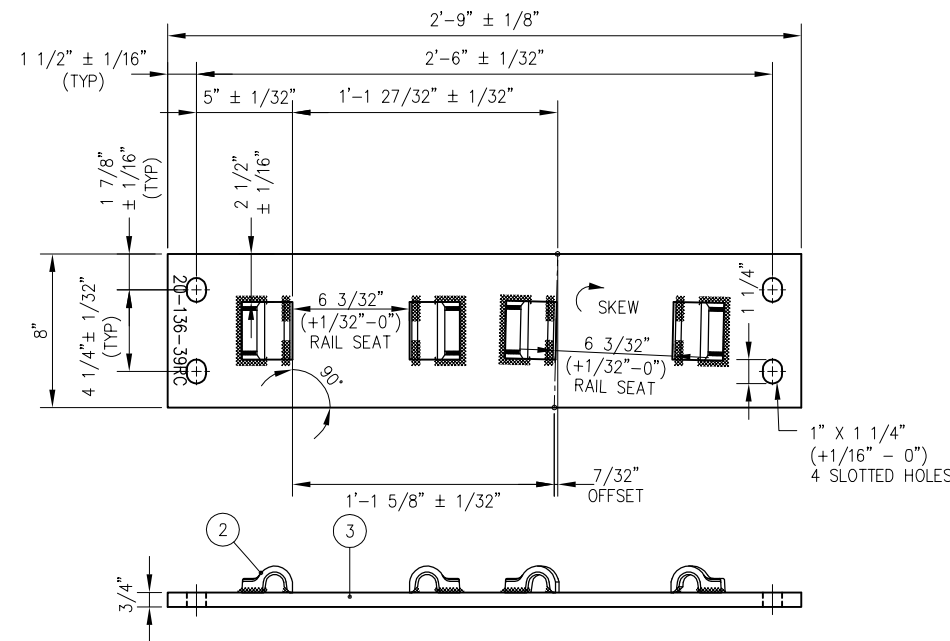
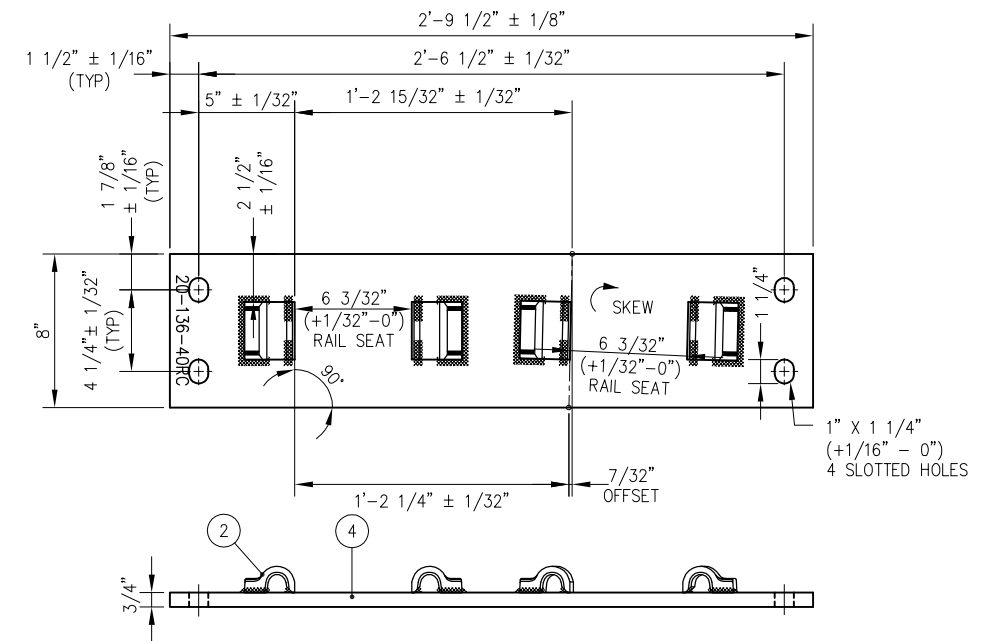


SWITCH PLATE P20-136-38RC



SWITCH PLATE P20-136-39RC



SWITCH PLATE P20-136-40RC

BILL OF MATERIALS	
ITEM	DESCRIPTION
1	FLAT BAR, ASTM A36, 3/4" x 8" x 2'-8 1/4"
2	SHOULDER, PANDROL, FORGED TONGUELESS, TYPE 1

BILL OF MATERIALS	
ITEM	DESCRIPTION
3	FLAT BAR, ASTM A36, 3/4" x 8" x 2'-9"
4	FLAT BAR, ASTM A36, 3/4" x 8" x 2'-9 1/2"

NOTES:

1. I.D. CHARACTERS SHALL BE 1/2" MINIMUM HEIGHT CLEARLY STAMPED AS SHOWN
2. WELDS SHALL BE DRESSED FLUSH WITH SHOULDER & NOT TO PROTRUDE INTO RAIL SEAT
3. SLOTTED HOLE CENTERS ARE INDICATED ON DRAWING

PENINSULA CORRIDOR JOINT POWERS BOARD

STANDARD DRAWINGS

REV	DATE	BY	CHK	APP	DESCRIPTION

APPROVED BY:

Bernard Anzures *Steph Chen*

ENGINEERING MANAGER DEPUTY DIRECTOR OF ENGINEERING



SPECIAL TRACKWORK
NO 20 TURNOUT
SWITCH PLATES FOR RH TURNOUT
20-38RC THROUGH 20-40RC

CADD FILE NO.: SD-2750	
REV	DATE
0	093011
SPECIAL TRACKWORK	
STANDARD NO.: SD-2750	