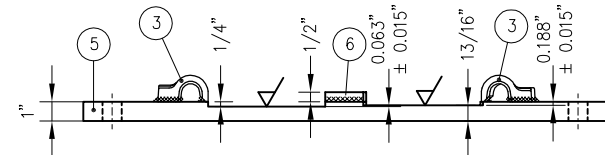
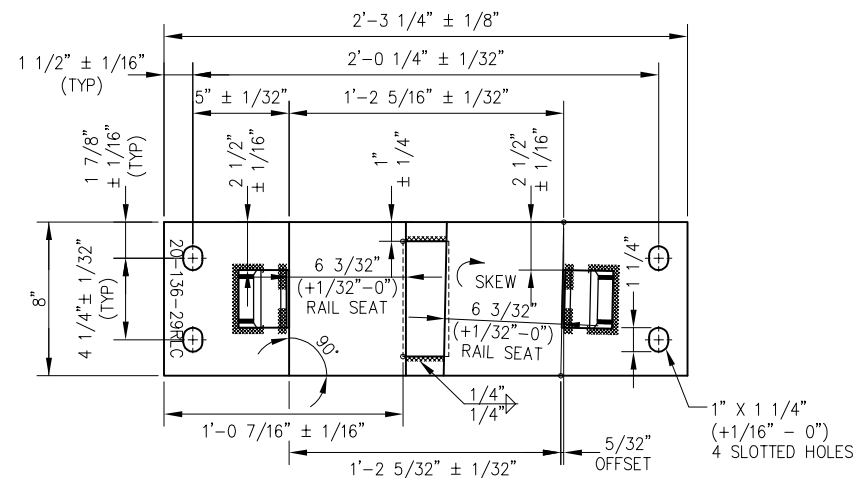
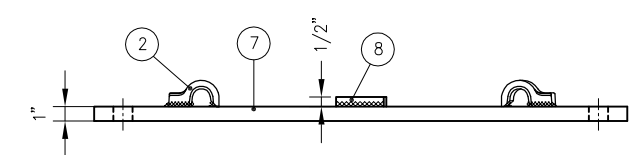
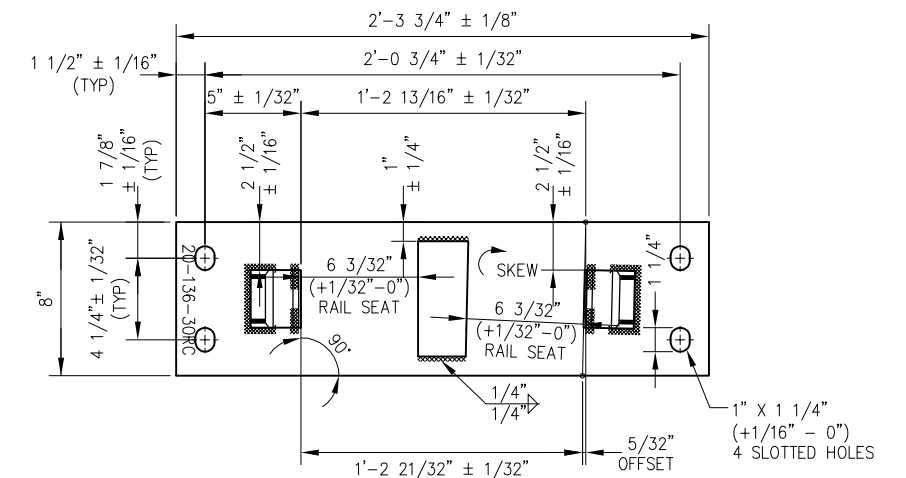


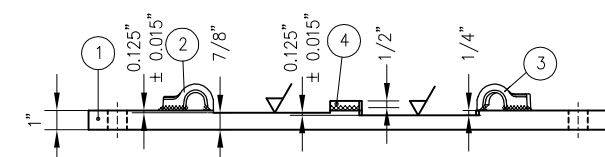
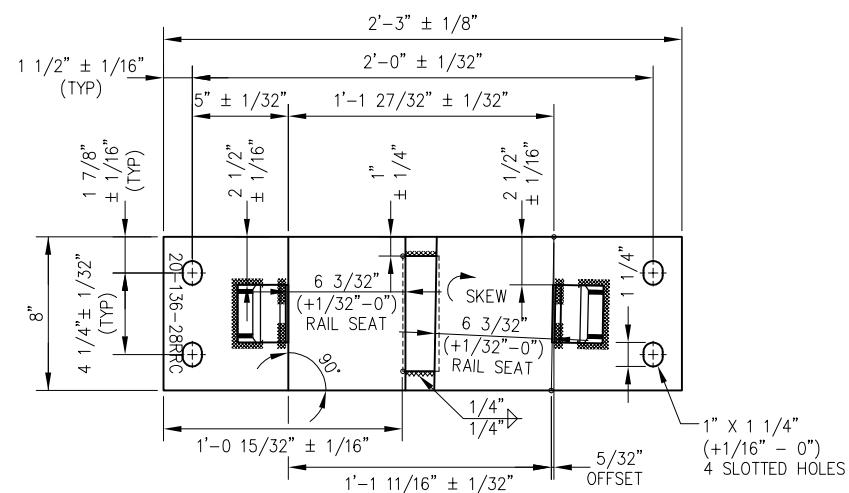
SWITCH PLATE P20-136-28RLC



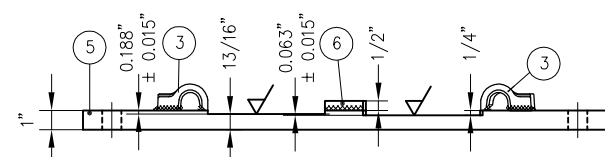
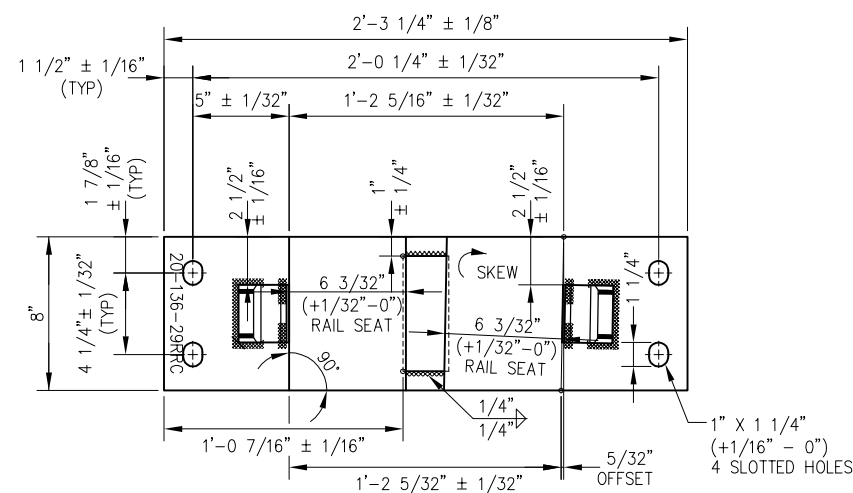
SWITCH PLATE P20-136-29RLC



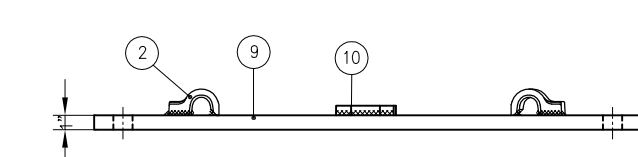
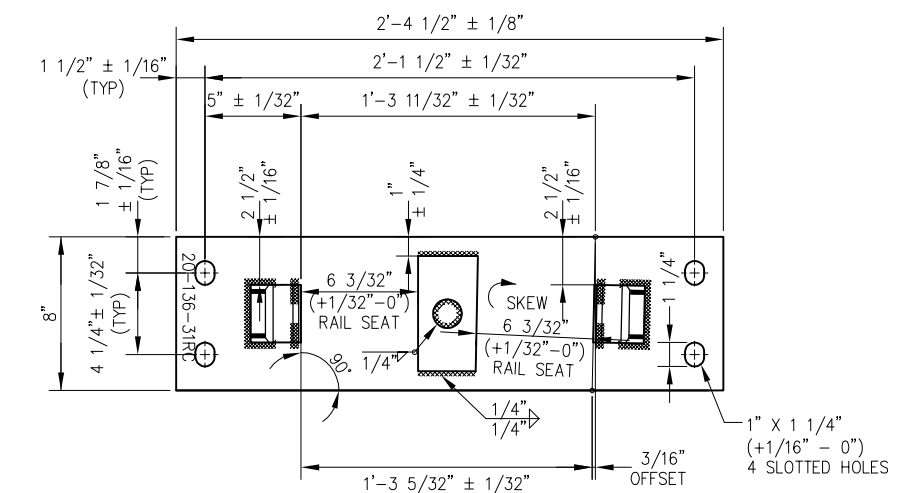
SWITCH PLATE P20-136-30RC



SWITCH PLATE P20-136-28RRC



SWITCH PLATE P20-136-29RRC



SWITCH PLATE P20-136-31RC

BILL OF MATERIALS	
ITEM	DESCRIPTION
1	FLAT BAR, ASTM A36, 1" x 8" x 2'-3"
2	SHOULDER, PANDROL, FORGED TONGUELESS, TYPE 1
3	SHOULDER, PANDROL, FORGED TONGUELESS, TYPE 5
4	FLAT BAR, ASTM A36, 1/2" x 6" x 1 7/8"
5	FLAT BAR, ASTM A36, 1" x 8" x 2'-3 1/4"

BILL OF MATERIALS	
ITEM	DESCRIPTION
6	FLAT BAR, ASTM A36, 1/2" x 6" x 2 3/8"
7	FLAT BAR, ASTM A36, 3/4" x 8" x 2'-3 3/4"
8	BURNED STOP, 1/2" THICK, TAPERED 2 5/8" TO 2 1/2", OVER 6"
9	FLAT BAR, ASTM A36, 3/4" x 8" x 2'-4 1/2"
10	BURNED STOP, 1/2" THICK, TAPERED 3" TO 3 1/8", OVER 6"

NOTES:

- I.D. CHARACTERS SHALL BE 1/2" MINIMUM HEIGHT CLEARLY STAMPED AS SHOWN
- WELDS SHALL BE DRESSED FLUSH WITH SHOULDER & NOT TO PROTRUDE INTO RAIL SEAT
- SLOTTED HOLE CENTERS ARE INDICATED ON DRAWING

PENINSULA CORRIDOR JOINT POWERS BOARD

APPROVED BY:

Bernard Anzures *Steph Chen*
ENGINEERING MANAGER DEPUTY DIRECTOR OF ENGINEERING



STANDARD DRAWINGS

SPECIAL TRACKWORK
NO 20 TURNOUT
SWITCH PLATES FOR RH TURNOUT
20-28RLC/RRC THROUGH 20-29RLC/RRC
20-30RC THROUGH 20-31RC

CADD FILE NO.: SD-2748	
REV 0	DATE 093011
SPECIAL TRACKWORK	
STANDARD NO.: SD-2748	

REV	DATE	BY	CHK	APP	DESCRIPTION