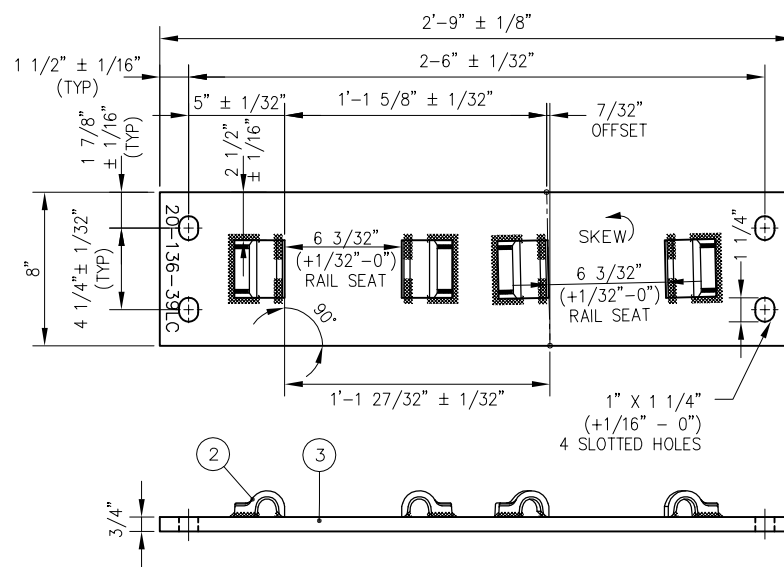
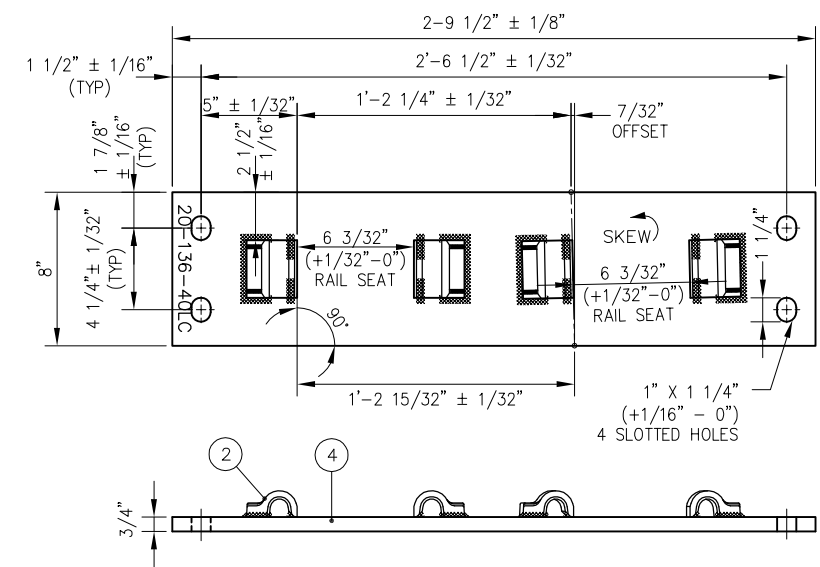


SWITCH PLATE P20-136-38LC



SWITCH PLATE P20-136-39LC



SWITCH PLATE P20-136-40LC

BILL OF MATERIALS

ITEM	DESCRIPTION
1	FLAT BAR, ASTM A36, 3/4" x 8" x 2'-8 1/4"
2	SHOULDER, PANDROL, FORGED TONGUELESS, TYPE 1


BILL OF MATERIALS

ITEM	DESCRIPTION
3	FLAT BAR, ASTM A36, 3/4" x 8" x 2'-9"
4	FLAT BAR, ASTM A36, 3/4" x 8" x 2'-9 1/2"

NOTES:

1. I.D. CHARACTERS SHALL BE 1/2" MINIMUM HEIGHT CLEARLY STAMPED AS SHOWN
2. WELDS SHALL BE DRESSED FLUSH WITH SHOULDER & NOT TO PROTRUDE INTO RAIL SEAT
3. SLOTTED HOLE CENTERS ARE INDICATED ON DRAWING

REV	DATE	BY	CHK	APP	DESCRIPTION

PENINSULA CORRIDOR JOINT POWERS BOARD		STANDARD DRAWINGS	CADD FILE NO.: SD-2746
APPROVED BY: <i>Bernard Anzures</i> <i>Steph Chen</i>		SPECIAL TRACKWORK NO 20 TURNOUT SWITCH PLATES FOR LH TURNOUT 20-38LC THROUGH 20-40LC	REV: 0 DATE: 093011
ENGINEERING MANAGER	DEPUTY DIRECTOR OF ENGINEERING		STANDARD NO.: SD-2746
 <small>1250 San Carlos Avenue San Carlos, CA 94070</small>			