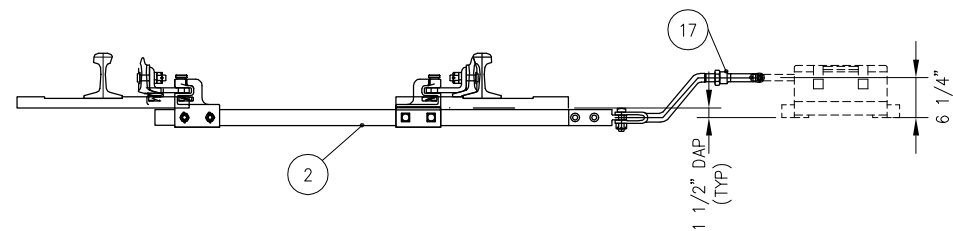


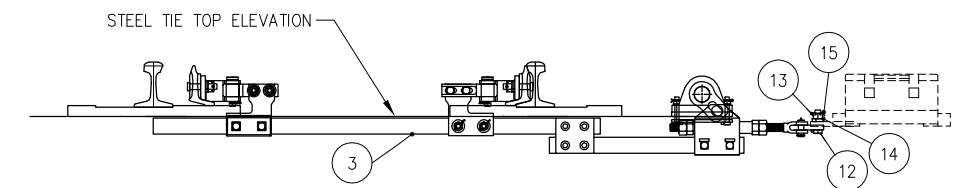
SWITCH ROD ASSEMBLY NO 1
LOCK ROD CONNECTION SHOWN
(VIEW FROM HEEL TOWARDS PS)



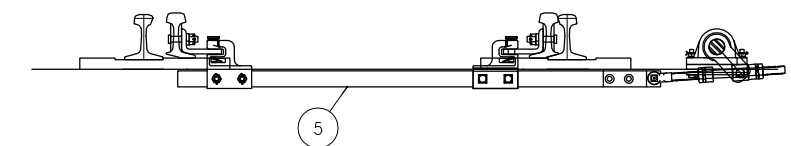
SWITCH ROD ASSEMBLY NO 1
POINT DETECTOR ROD CONNECTION SHOWN
(VIEW FROM HEEL TOWARDS PS)

BILL OF MATERIAL			
ITEM	QTY	DESCRIPTION	DWG NO
1	1	ROTARY ASSIST ASSEMBLY FOR NO 20-136 LB RE TURNOUT	-
2	1	SWITCH ROD NO 1, FOR POINT DETECTOR/LOCK ROD, (20-136-1)	SD-2741
3	1	SWITCH ROD NO 2, DRIVE, C/W BASKET (20-136-2)	SD-2741
4	1	SWITCH ROD NO 3, THROW, (20-136-3)	SD-2741
5	1	SWITCH ROD NO 4, THROW, (20-136-4)	SD-2742
6	1	SWITCH ROD NO 5, THROW, (20-136-5)	SD-2742
7	2	ROD POINT BRACKET, DETECTOR/LOCK ROD, HOLES AT 2 7/8" ARB*	-
8	1	ROD POINT BRACKET, THROW ROD, ANTI-ROLL, HOLES AT 2 7/8" ARB* LH	-
9	1	ROD POINT BRACKET, THROW ROD, ANTI-ROLL, HOLES AT 2 7/8" ARB* RH	-
10	6	ROD POINT BRACKET, HOLES AT 2 3/8" ARB* C/W SQUARE BOLTS	-
11	1	DROP LUG FOR US&S M23 SWITCH MACHINE DRIVE BAR	-
12	1	BOLT, 7/8" DIA X 3" LONG, DRILLED 2 9/16" BELOW HEAD, HEAVY HEX, GR 5	-
13	1	NUT, 7/8" DIA SLOTTED HEAVY HEX, GR 8	-
14	1	SPRING WASHER, 7/8" DIA	-
15	1	COTTER PIN, 3/16" DIA X 1 3/4" LONG	-
16	1	LOCK ROD, FOR M23 SWITCH MACHINE, HST	-
17	1	DETECTOR ROD, FOR M23 SWITCH MACHINE, HST	-

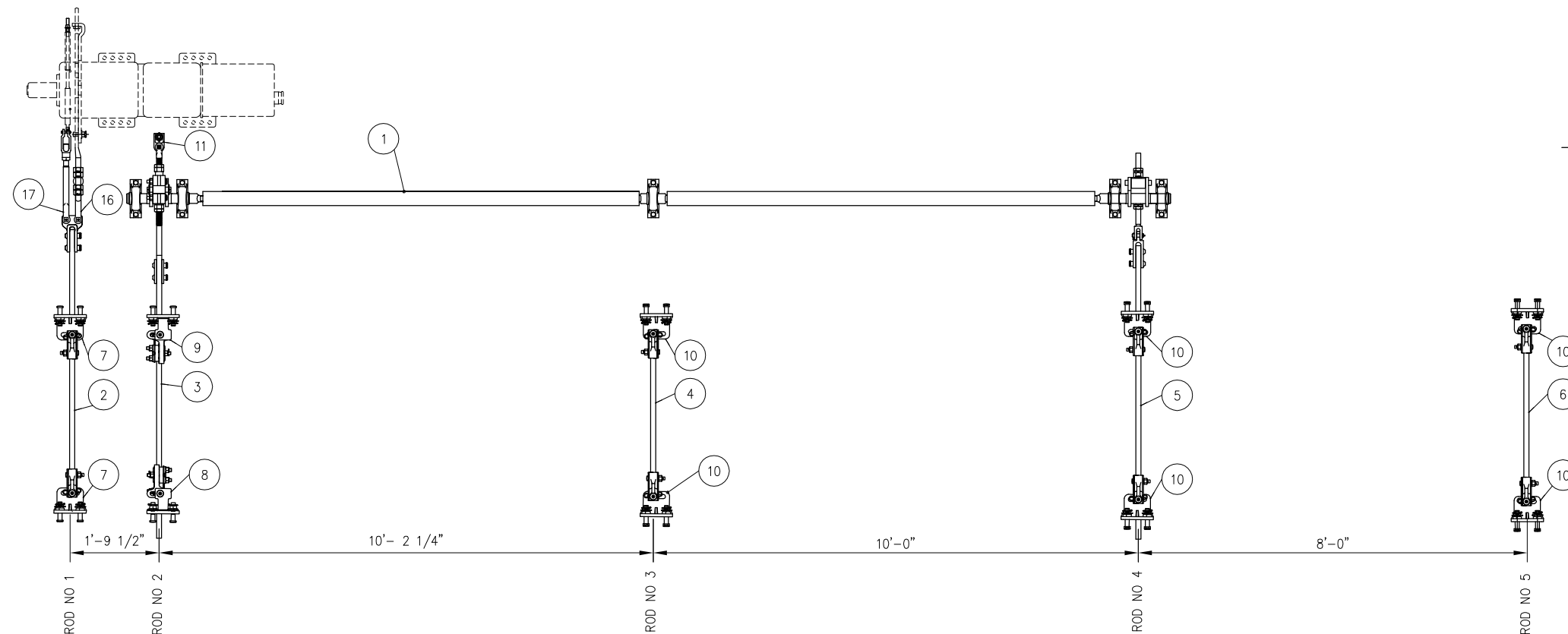
ARB*- ABOVE RAIL BASE



DRIVE ROD (ROD NO 2) ASSEMBLY
FRONT HELPER ROD CRANK ATTACHES TO BASKET
(VIEW FROM HEEL TOWARDS PS)





REAR HELPER (ROD NO 4) DRIVE ROD
ASSEMBLY REAR HELPER ROD CRANK
ATTACHES TO ROD PIN




REV	DATE	BY	CHK	APP	DESCRIPTION

PENINSULA CORRIDOR JOINT POWERS BOARD

APPROVED BY:

ENGINEERING MANAGER DEPUTY DIRECTOR OF ENGINEERING



1250 San Carlos Avenue
 San Carlos, CA 94070

STANDARD DRAWINGS

SPECIAL TRACKWORK
 NO 20 TURNOUT
 HOLLOW STEEL TIE ROD ASSEMBLY
 SWITCH MACHINE ON LH SIDE

CADD FILE NO.:	SD-2739
REV	DATE
0	093011
SPECIAL TRACKWORK	
STANDARD NO.:	SD-2739