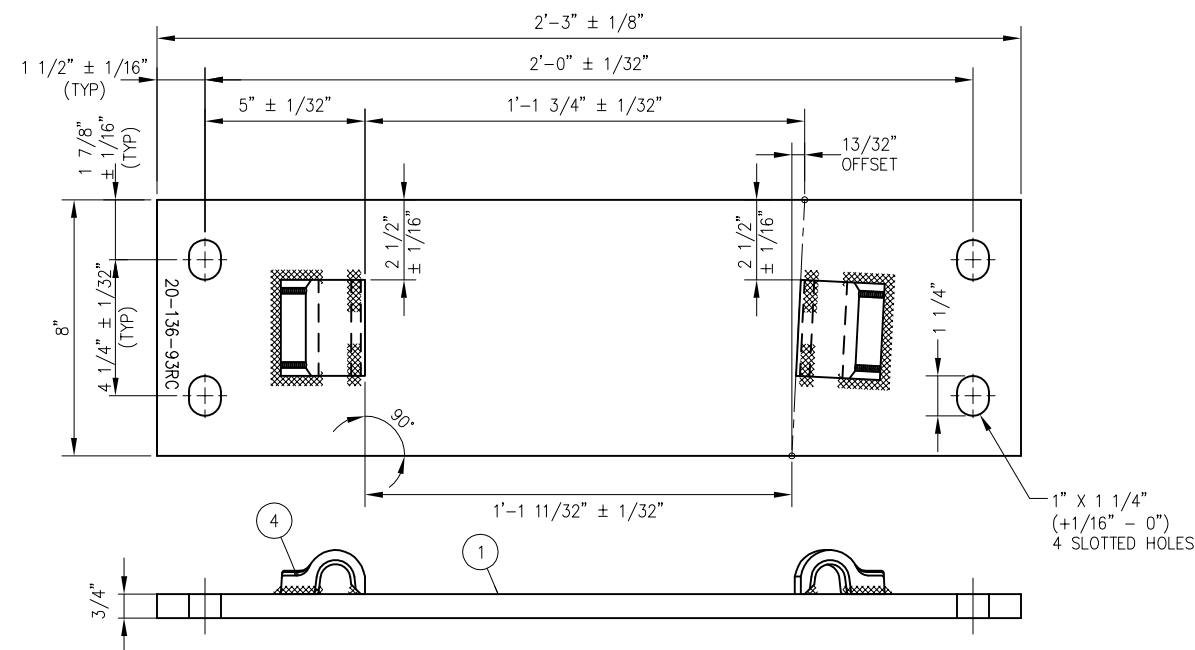


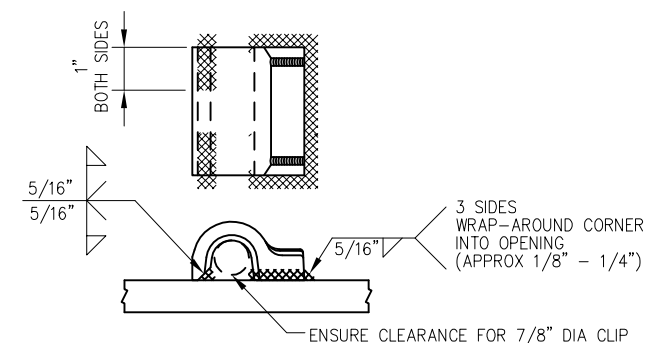
BILL OF MATERIAL					DWG NO
ITEM	QTY FOR 20-93RC	QTY FOR 20-94RC	QTY FOR 20-95RC	DESCRIPTION	
1	1	0	0	FLAT BAR, ASTM A36, 3/4" x 8" x 2'-3" LONG	-
2	0	1	0	FLAT BAR, ASTM A36, 3/4" x 8" x 2'-4" LONG	-
3	0	0	1	FLAT BAR, ASTM A36, 3/4" x 8" x 2'-5 1/2" LONG	-
4	2	2	4	SHOULDER, PANDROL, FORGED TONGUELESS, TYPE 1	-
5	0	1	0	BURNED STOP, 1/2" THICK, TAPERED 2 3/8" TO 2 5/16", 6" LONG	-



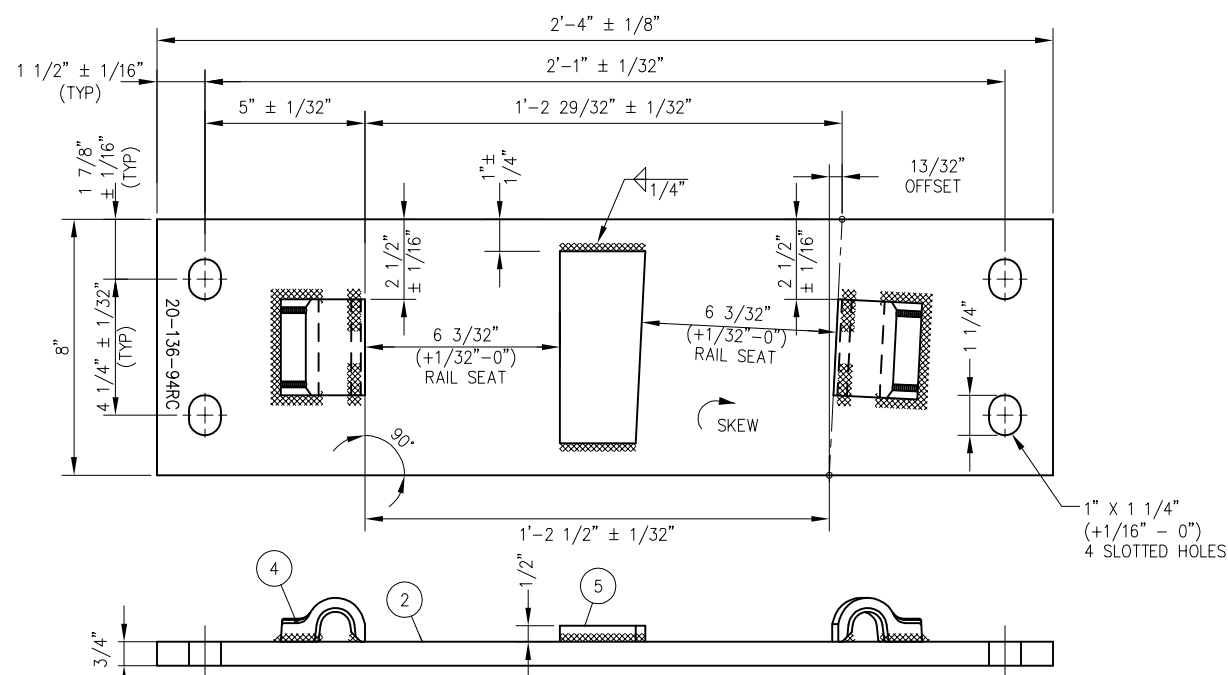
FROG BASE PLATE 20-136-93RC

NOTES:

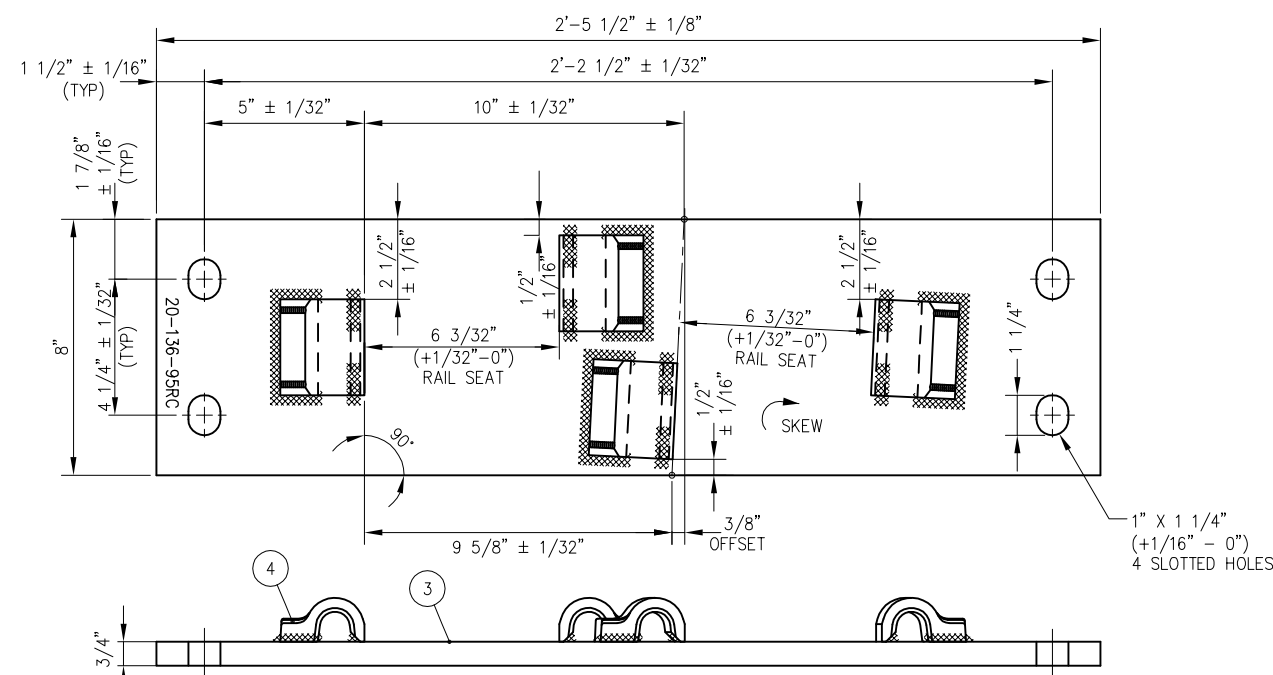
1. I.D. CHARACTERS SHALL BE 1/2" MINIMUM HEIGHT CLEARLY STAMPED AS SHOWN
2. WELDS SHALL BE DRESSED FLUSH WITH SHOULDER & NOT TO PROTRUDE INTO RAIL SEAT
3. SLOTTED HOLE CENTERS ARE INDICATED ON DRAWING



FORGED SHOULDER WELDING DETAIL



FROG BASE PLATE 20-136-94RC



FROG BASE PLATE 20-136-95RC

REV	DATE	BY	CHK	APP	DESCRIPTION

**PENINSULA CORRIDOR JOINT POWERS BOARD**

APPROVED BY:

*Bernard Anagnostis*      *Steph Chen*

ENGINEERING MANAGER      DEPUTY DIRECTOR OF ENGINEERING

**Caltrain**

1250 San Carlos Avenue  
San Carlos, CA 94070

**STANDARD DRAWINGS**

SPECIAL TRACKWORK  
NO 20 TURNOUT  
WSM FROG RH  
FROG BASE PLATES 20-93RC, 20-94RC & 20-95RC

CADD FILE NO.: SD-2732

REV 0 DATE 093011

SPECIAL TRACKWORK

STANDARD NO.: SD-2732