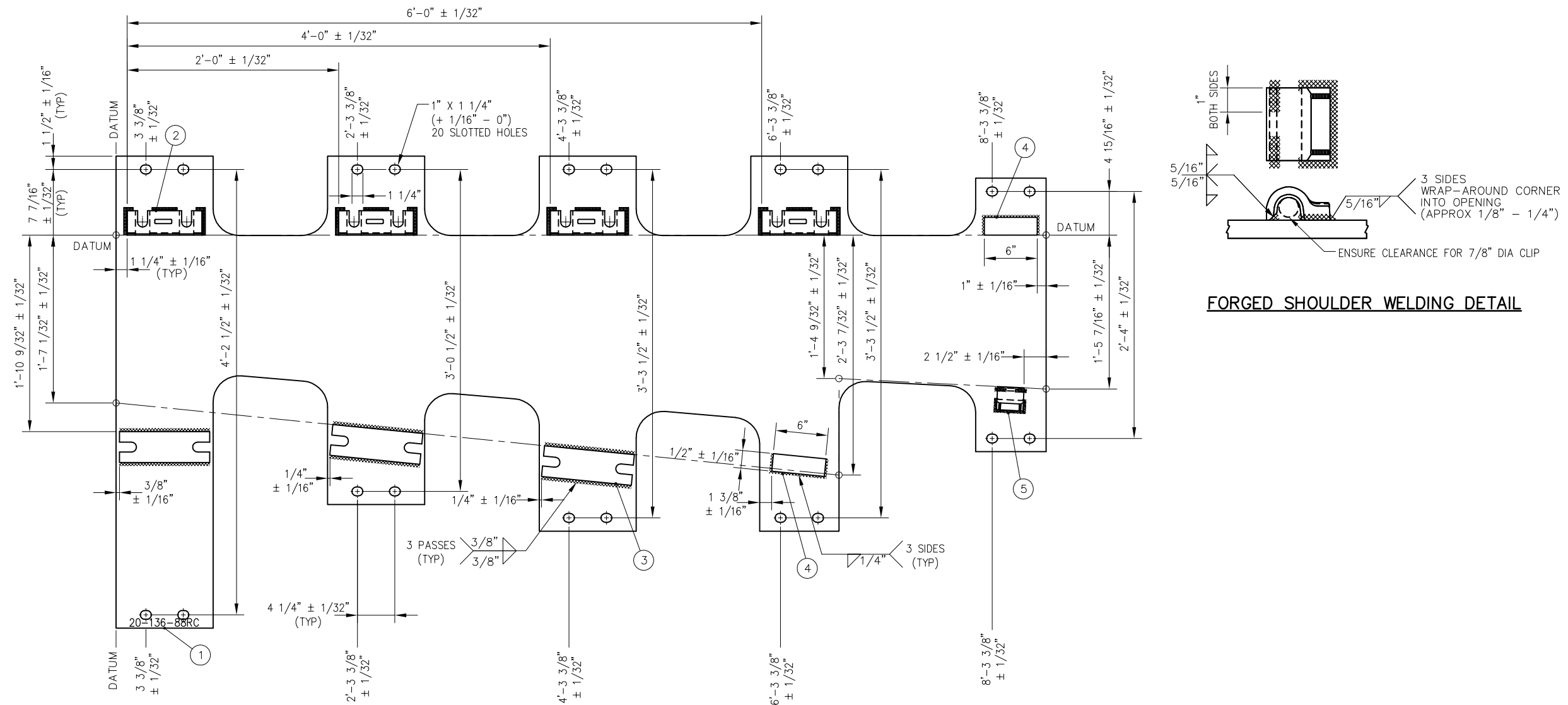


BILL OF MATERIAL				
ITEM	QTY	DESCRIPTION	DWG NO	
1	1	BURNED PLATE, 3/4" THICK	-	
2	4	CAPTURE BLOCK FOR PLATE CLIP	-	
3	3	CAPTURE BLOCK FOR HORN KEEPER	-	
4	2	FLAT BAR, ASTM A36, 1/2" THICK X 2" X 6" LONG	-	
5	1	SHOULDER, PANDROL, FORGED TONGUELESS, TYPE 1	-	



FROG BASE PLATE 20-136-88RC

NOTES:

1. I.D. CHARACTERS SHALL BE 1/2" MINIMUM HEIGHT CLEARLY STAMPED AS SHOWN
2. WELDS SHALL BE DRESSED FLUSH WITH SHOULDER AND NOT TO PROTRUDE INTO RAIL SEAT
3. OPENINGS IN BOLT CAPTURE BLOCKS SHALL BE FREE OF WELD AND SPATTER
4. SLOTTED HOLE CENTERS ARE INDICATED ON DRAWING

REV	DATE	BY	CHK	APP	DESCRIPTION

PENINSULA CORRIDOR JOINT POWERS BOARD

APPROVED BY:

Bernard Anagnost *Steph Chen*

ENGINEERING MANAGER DEPUTY DIRECTOR OF ENGINEERING



1250 San Carlos Avenue
San Carlos, CA 94070

STANDARD DRAWINGS

SPECIAL TRACKWORK
NO 20 TURNOUT
WSM FROG RH
FROG BASE PLATE 20-88RC

CADD FILE NO.: SD-2730	
REV 0	DATE 093011
SPECIAL TRACKWORK	
STANDARD NO.: SD-2730	