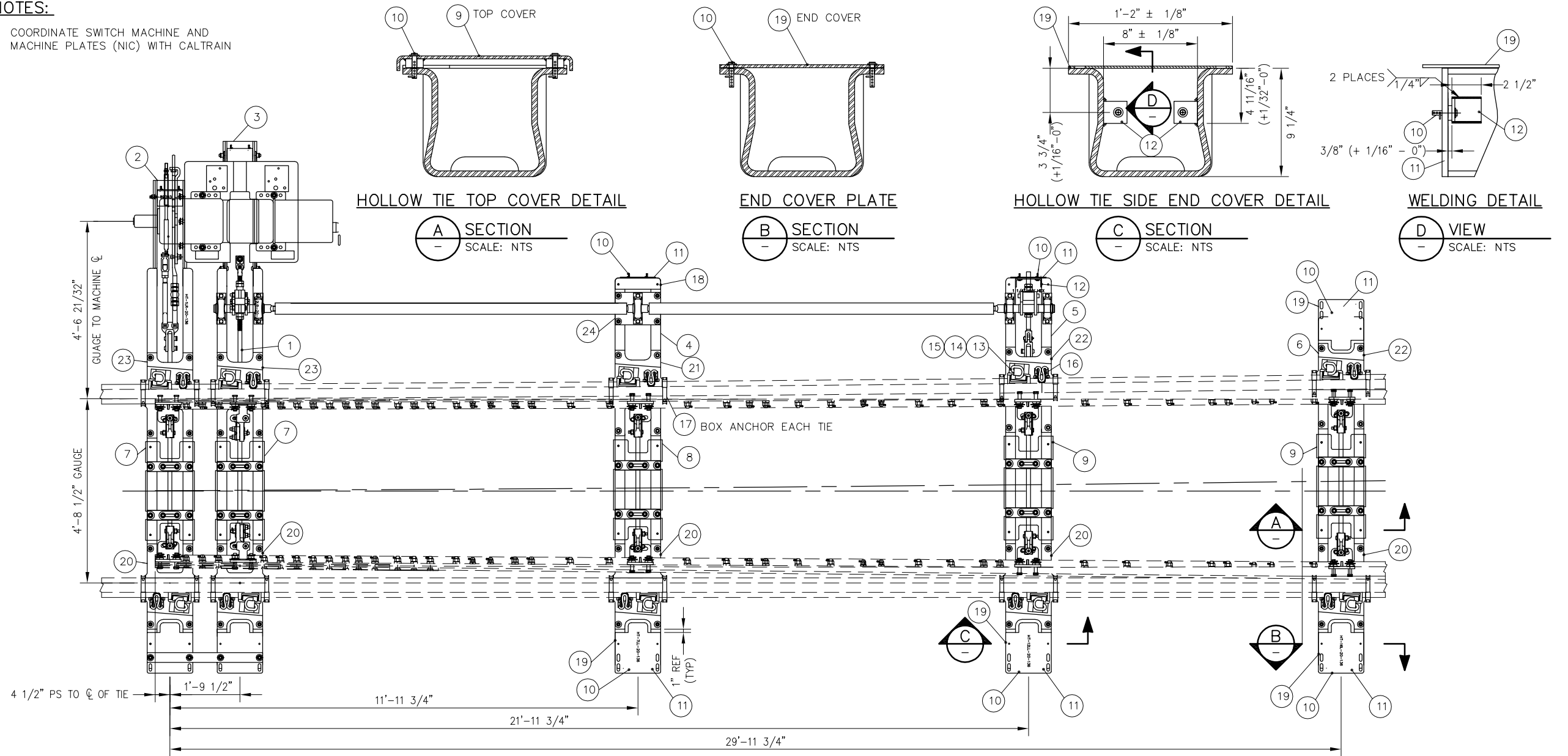


BILL OF MATERIAL				BILL OF MATERIAL			
ITEM	QTY	DESCRIPTION	DWG NO	ITEM	QTY	DESCRIPTION	DWG NO
1	1	RODDING ASSEMBLY FOR NO 20-136 LB RE, SWITCH MACHINE ON LH SIDE	SD-2739	13	10	LV BRACE FOR 136 LB RE	-
2	1	HOLLOW TIE ASSEMBLY (HT-1LL-20-136)	-	14	10	SERRATED WASHER FOR LV BRACE	-
3	1	HOLLOW TIE ASSEMBLY (HT-2LL-20-136)	-	15	10	CLIP, PANDROL, E2055	-
4	1	HOLLOW TIE ASSEMBLY (HT-7LL-20-136)	-	16	10	CLIP, PANDROL, FC1601	-
5	1	HOLLOW TIE ASSEMBLY (HT-12LL-20-136)	-	17	20	RAIL ANCHOR, UNIT DRIVE-ON TYPE 5	-
6	1	HOLLOW TIE ASSEMBLY (HT-16L-20-136)	-	18	1	STEEL COVER PLATE FOR HST TIE, SHORT TOP VERSION	-
7*	2	COVER PLATE NO 1, HOLLOW SWITCH TIE	-	19	4	STEEL COVER PLATE FOR HST TIE, TOP END	-
8*	1	COVER PLATE NO 2, HOLLOW SWITCH TIE	-	20	5	HST SWITCH PLATE HTP-206-STR	SD-2305
9*	2	COVER PLATE NO 3, HOLLOW SWITCH TIE	-	21	1	HST SWITCH PLATE HTP-208-L	SD-2307
10	42	PUSH PIN ASSEMBLY FOR HST COVERS	-	22	2	HST SWITCH PLATE HTP-200-L	SD-2308
11	6	STEEL SIDE END COVER PLATE ASSEMBLY FOR HST TIE	-	23	2	HST SWITCH PLATE HTP-300-L	SD-2306
12	12	COVER SUPPORT BRACKET	-	24	1	PILLOW BLOCK MOUNTING PLATE	-

* COVER PLATES SHOWN TRANSPARENT FOR CLARITY

NOTES:

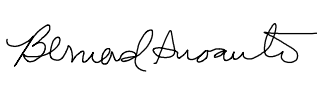

- COORDINATE SWITCH MACHINE AND MACHINE PLATES (NIC) WITH CALTRAIN




REV	DATE	BY	CHK	APP	DESCRIPTION

PENINSULA CORRIDOR JOINT POWERS BOARD

APPROVED BY:



1250 San Carlos Avenue
San Carlos, CA 94070

STANDARD DRAWINGS

SPECIAL TRACKWORK
NO 20 TURNOUT
HOLLOW STEEL TIES FOR LH TURNOUT
WITH SWITCH MACHINE ON TURNOUT SIDE

CADD FILE NO.:	SD-2720
REV	DATE
0	093011
SPECIAL TRACKWORK	
STANDARD NO.:	SD-2720