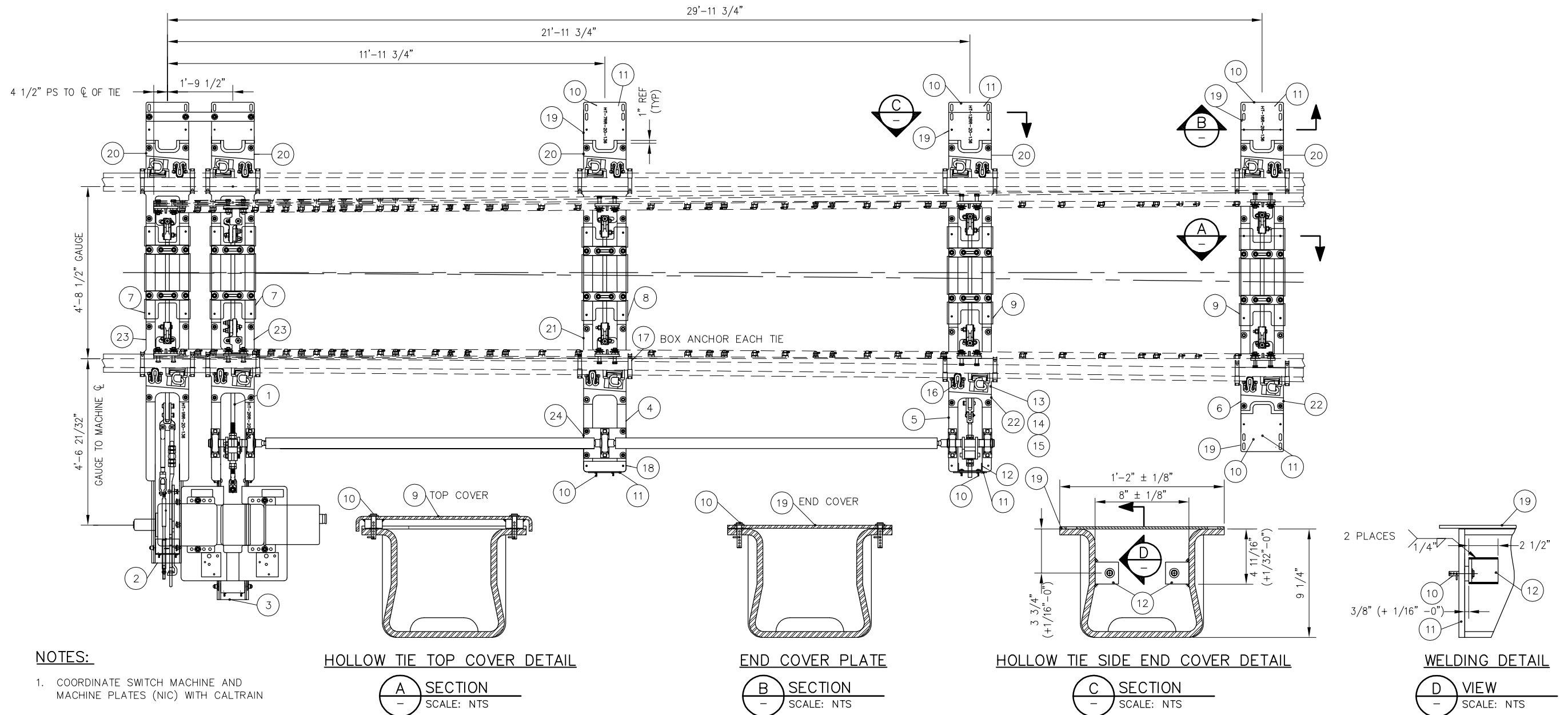


BILL OF MATERIAL					BILL OF MATERIAL				
ITEM	QTY	DESCRIPTION	DWG NO	ITEM	QTY	DESCRIPTION	DWG NO		
1	1	RODDING ASSEMBLY FOR NO 20-136 LB RE, SWITCH MACHINE ON RH SIDE	SD-2740	13	10	LV BRACE FOR 136 LB RE	-		
2	1	HOLLOW TIE ASSEMBLY (HT-1RR-20-136)	-	14	10	SERRATED WASHER FOR LV BRACE	-		
3	1	HOLLOW TIE ASSEMBLY (HT-2RR-20-136)	-	15	10	CLIP, PANDROL, E2055	-		
4	1	HOLLOW TIE ASSEMBLY (HT-7RR-20-136)	-	16	10	CLIP, PANDROL, FC1601	-		
5	1	HOLLOW TIE ASSEMBLY (HT-12RR-20-136)	-	17	20	RAIL ANCHOR, UNIT DRIVE-ON TYPE 5	-		
6	1	HOLLOW TIE ASSEMBLY (HT-16R-20-136)	-	18	1	STEEL COVER PLATE FOR HST TIE, SHORT TOP VERSION	-		
7*	2	COVER PLATE NO 1, HOLLOW SWITCH TIE	-	19	4	STEEL COVER PLATE FOR HST TIE, TOP END	-		
8*	1	COVER PLATE NO 2, HOLLOW SWITCH TIE	-	20	5	HST SWITCH PLATE HTP-206-STR	SD-2305		
9*	2	COVER PLATE NO 3, HOLLOW SWITCH TIE	-	21	1	HST SWITCH PLATE HTP-209-R	SD-2307		
10	42	PUSH PIN ASSEMBLY FOR HST COVERS	-	22	2	HST SWITCH PLATE HTP-201-R	SD-2308		
11	6	STEEL SIDE END COVER PLATE ASSEMBLY FOR HST TIE	-	23	2	HST SWITCH PLATE HTP-301-R	SD-2306		
12	12	COVER SUPPORT BRACKET	-	24	1	PILLOW BLOCK MOUNTING PLATE	-		

* COVER PLATES SHOWN TRANSPARENT FOR CLARITY



NOTES:

1. COORDINATE SWITCH MACHINE AND MACHINE PLATES (NIC) WITH CALTRAIN

HOLLOW TIE TOP COVER DETAIL



END COVER PLATE



HOLLOW TIE SIDE END COVER DETAIL



WELDING DETAIL



REV	DATE	BY	CHK	APP	DESCRIPTION

PENINSULA CORRIDOR JOINT POWERS BOARD

APPROVED BY:




ENGINEERING MANAGER DEPUTY DIRECTOR OF ENGINEERING



1250 San Carlos Avenue
San Carlos, CA 94070

STANDARD DRAWINGS		CADD FILE NO.:
SPECIAL TRACKWORK NO 20 TURNOUT HOLLOW STEEL TIES FOR RH TURNOUT WITH SWITCH MACHINE ON TURNOUT SIDE		SD-2719
REV	DATE	
0	093011	
STANDARD NO.:		SD-2719