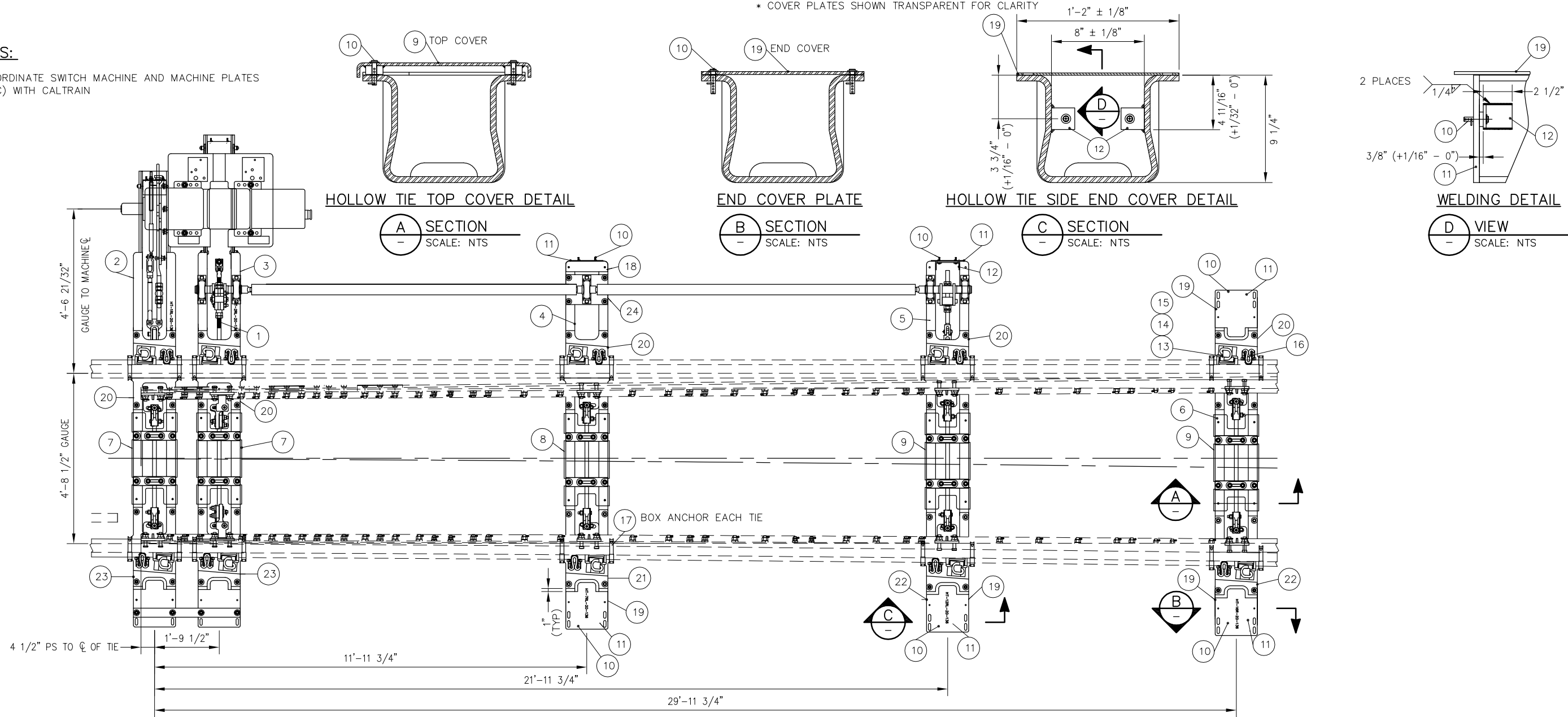


BILL OF MATERIAL				BILL OF MATERIAL			
ITEM	QTY	DESCRIPTION	DWG NO	ITEM	QTY	DESCRIPTION	DWG NO
1	1	ASSEMBLY FOR NO 20-136 LB RE, SWITCH MACHINE ON LH SIDE	SD-2739	13	10	LV BRACE FOR 136 LB RE	-
2	1	HOLLOW TIE ASSEMBLY (HT-1RL-20-136)	-	14	10	SERRATED WASHER FOR LV BRACE	-
3	1	HOLLOW TIE ASSEMBLY (HT-2RL-20-136)	-	15	10	CLIP, PANDROL, E2055	-
4	1	HOLLOW TIE ASSEMBLY (HT-7RL-20-136)	-	16	10	CLIP, PANDROL, FC1601	-
5	1	HOLLOW TIE ASSEMBLY (HT-12RL-20-136)	-	17	20	RAIL ANCHOR, UNIT DRIVE-ON TYPE 5	-
6	1	HOLLOW TIE ASSEMBLY (HT-16L-20-136)	-	18	1	STEEL COVER PLATE FOR HST TIE, SHORT TOP VERSION	-
7*	2	COVER PLATE NO 1, HOLLOW SWITCH TIE	-	19	4	STEEL COVER PLATE FOR HST TIE, TOP END	-
8*	1	COVER PLATE NO 2, HOLLOW SWITCH TIE	-	20	5	HST SWITCH PLATE HTP-206-STR	SD-2305
9*	2	COVER PLATE NO 3, HOLLOW SWITCH TIE	-	21	1	HST SWITCH PLATE HTP-209-R	SD-2307
10	42	PUSH PIN ASSEMBLY FOR HST COVERS	-	22	2	HST SWITCH PLATE HTP-201-R	SD-2308
11	6	STEEL SIDE END COVER PLATE ASSEMBLY FOR HST TIE	-	23	2	HST SWITCH PLATE HTP-301-R	SD-2306
12	12	COVER SUPPORT BRACKET	-	24	1	PILLOW BLOCK MOUNTING PLATE	-

NOTES:

- COORDINATE SWITCH MACHINE AND MACHINE PLATES (NIC) WITH CALTRAIN

* COVER PLATES SHOWN TRANSPARENT FOR CLARITY



PENINSULA CORRIDOR JOINT POWERS BOARD

STANDARD DRAWINGS

CADD FILE NO.: SD-2717

REV 0 DATE 093011

SPECIAL TRACKWORK

STANDARD NO.: SD-2717

APPROVED BY:

Bernard Anzures *Steph Chen*

ENGINEERING MANAGER

DEPUTY DIRECTOR OF ENGINEERING



1250 San Carlos Avenue
San Carlos, CA 94070

SPECIAL TRACKWORK
NO 20 TURNOUT
HOLLOW STEEL TIES FOR RH TURNOUT
WITH SWITCH MACHINE ON MAINLINE SIDE

REV	DATE	BY	CHK	APP	DESCRIPTION