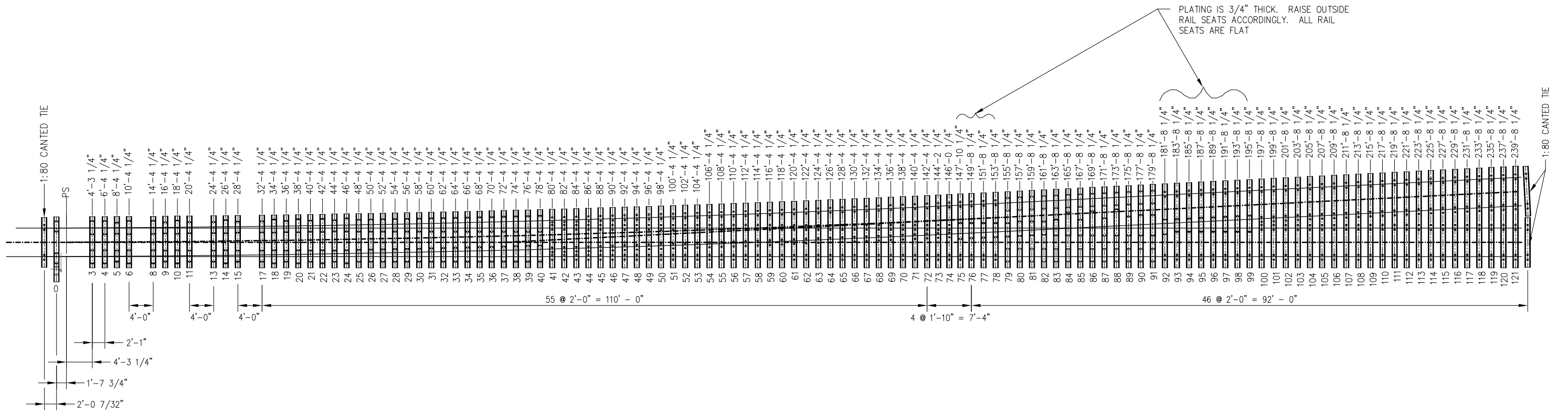
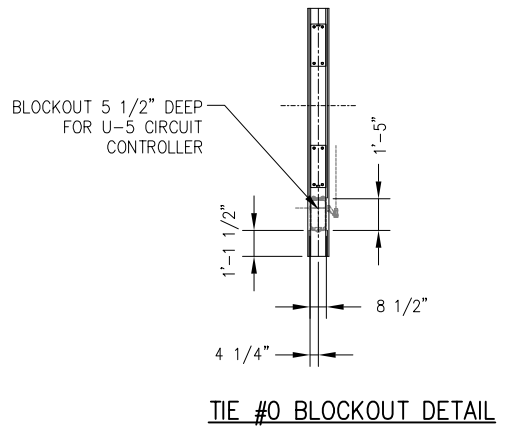


BILL OF MATERIALS			
ITEM	QTY	DESCRIPTION	DWG NO
1	5	TIES 1,2,7,12 AND 16, POWER SWITCH MACHINE ON MAINLINE SIDE FOR LH TURNOUT (HOLLOW STEEL)	SD-2718
2	5	TIES 1,2,7,12 AND 16, POWER SWITCH MACHINE ON TURNOUT SIDE FOR LH TURNOUT (HOLLOW STEEL)	SD-2720



PLATING IS 3/4" THICK. RAISE OUTSIDE RAIL SEATS ACCORDINGLY. ALL RAIL SEATS ARE FLAT



NOTES:

1. SET SHALL INCLUDE TIES 0, 3 THROUGH 6, 8 THROUGH 11, 13 THROUGH 15 AND 17 THROUGH 121, THREE 1:80 CANTED TIES, PLATE TIE PADS AND RIM INSERTS
2. TIE LENGTHS ARE DETERMINED BY ADDING 1'-10 7/16" FROM RAIL GAUGE LINE (OR 1'-9" FROM RAIL CENTERLINE) PER SIDE AT THE CENTERLINE OF EACH TIE LOCATION
3. ALL TIES ARE FLAT (NON-CANTED) EXCEPT 1:80 CANTED TIES
4. TRANSITION TIES (QUANTITY 3) SHALL INCORPORATE 1:80 CANTED RAIL SEATS AND USE 4'-8 1/2" BETWEEN STRAIGHT RAIL SEAT GAUGES. LENGTH SHALL BE 8'-3"
5. THIS DRAWING SHOWS TIE "0" PLACEMENT FOR SWITCH MACHINE ON LH/TURNOUT SIDE. USE OPPOSITE HAND FOR SWITCH MACHINE ON RH/MAINLINE SIDE
6. SEE BILL OF MATERIALS ABOVE FOR TIES 1, 2, 7, 12 AND 16

REV	DATE	BY	CHK	APP	DESCRIPTION

PENINSULA CORRIDOR JOINT POWERS BOARD

APPROVED BY:






1250 San Carlos Avenue
San Carlos, CA 94070

STANDARD DRAWINGS

**SPECIAL TRACKWORK
NO 20 TURNOUT
HOLLOW STEEL TIE AND CONCRETE TIE
LAYOUT FOR LH TURNOUT**

CADD FILE NO.:	SD-2716
REV	DATE
0	093011
SPECIAL TRACKWORK	
STANDARD NO.:	SD-2716