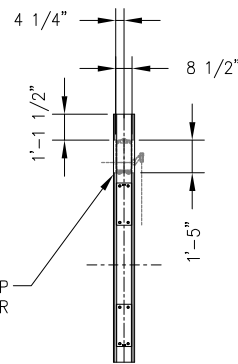
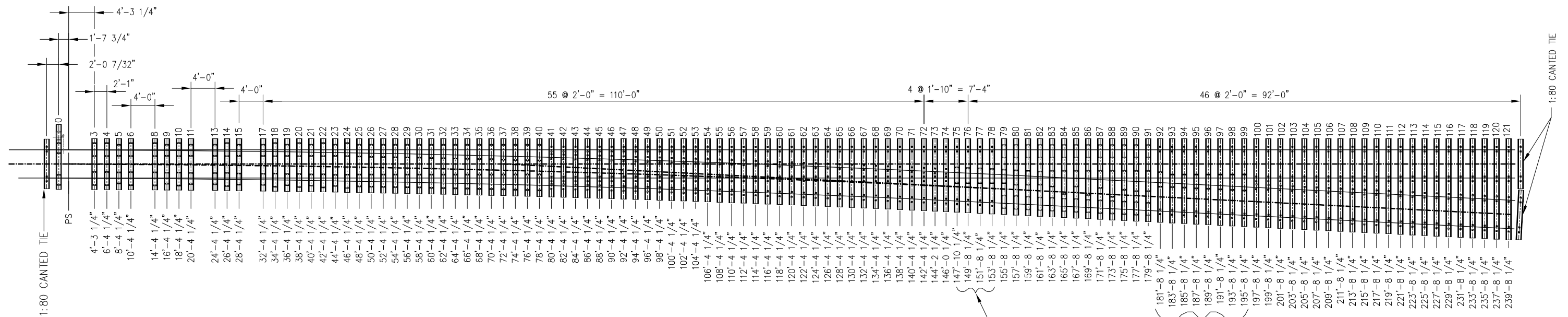


BILL OF MATERIALS			
ITEM	QTY	DESCRIPTION	DWG NO
1	5	TIES 1,2,7,12 AND 16, POWER SWITCH MACHINE ON MAINLINE SIDE FOR RH TURNOUT (HOLLOW STEEL)	SD-2717
2	5	TIES 1,2,7,12 AND 16, POWER SWITCH MACHINE ON TURNOUT SIDE FOR RH TURNOUT (HOLLOW STEEL)	SD-2719



BLOCKOUT 5 1/2" DEEP FOR U-5 CIRCUIT CONTROLLER

TIE #0 BLOCKOUT DETAIL

NOTES:

- SET SHALL INCLUDE TIES 0,3 THROUGH 6, 8 THROUGH 11, 13 THROUGH 15 AND 17 THROUGH 121, THREE 1:80 CANTED TIES, PLATE TIE PADS AND RIM INSERTS
- TIE LENGTHS ARE DETERMINED BY ADDING 1'-10 7/16" FROM RAIL GAUGE LINE (OR 1'-9" FROM RAIL CENTERLINE) PER SIDE AT THE CENTERLINE OF EACH TIE LOCATION
- ALL TIES ARE FLAT (NON-CANTED) EXCEPT 1:80 CANTED TIES
- TRANSITION TIES (QUANTITY 3) SHALL INCORPORATE 1:80 CANTED RAIL SEATS AND USE 4'-8 1/2" BETWEEN STRAIGHT RAIL SEAT GAUGES. LENGTH SHALL BE 8'-3"
- THIS DRAWING SHOWS TIE "0" PLACEMENT FOR SWITCH MACHINE ON RH/TURNOUT SIDE. USE OPPOSITE HAND FOR SWITCH MACHINE ON LH/MAINLINE SIDE
- SEE BILL OF MATERIALS ABOVE FOR TIES 1, 2, 7, 12 AND 16

PLATING IS 3/4" THICK. RAISE OUTSIDE RAIL SEATS ACCORDINGLY. ALL RAIL SEATS ARE FLAT

PENINSULA CORRIDOR JOINT POWERS BOARD

STANDARD DRAWINGS

REV	DATE	BY	CHK	APP	DESCRIPTION

APPROVED BY:
Bernard Anzures ENGINEERING MANAGER
Steph Chen DEPUTY DIRECTOR OF ENGINEERING



**SPECIAL TRACKWORK
 NO 20 TURNOUT
 HOLLOW STEEL TIE AND CONCRETE TIE
 LAYOUT FOR RH TURNOUT**

CADD FILE NO.: SD-2715	
REV 0	DATE 093011
SPECIAL TRACKWORK	
STANDARD NO.: SD-2715	