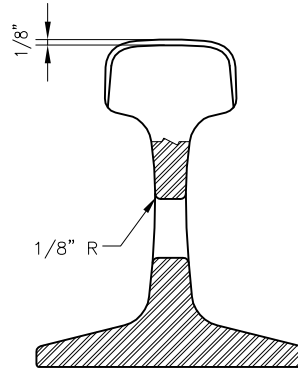
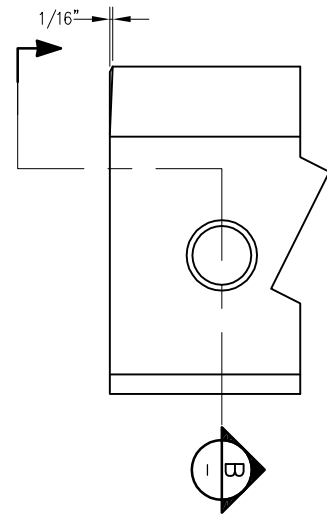


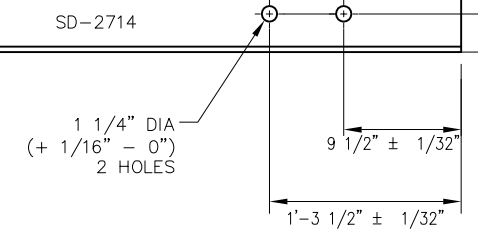
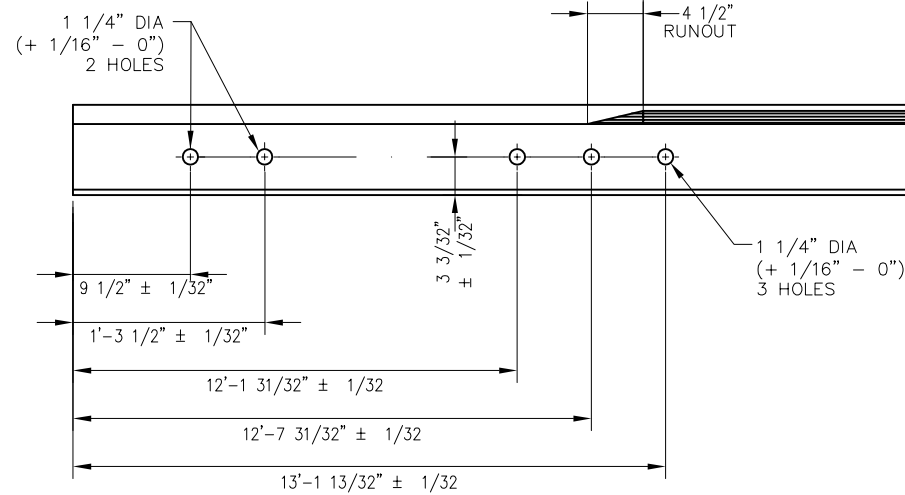
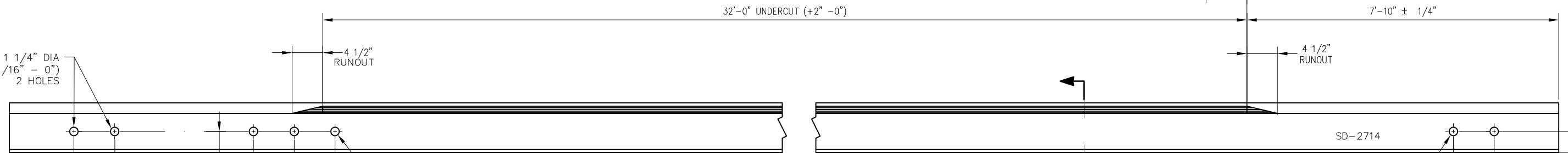
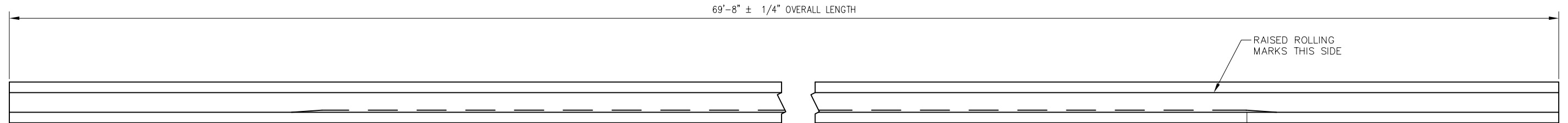
**A PARTIAL SECTION**  
SCALE: NTS



**B SECTION**  
SCALE: NTS

**RAIL END / HOLE BEVELING DETAILS**  
RAIL HEAD ONLY - NOT BASE

BILL OF MATERIAL		
ITEM	QTY	DESCRIPTION
1	1	RAIL, 136 LB RE 69'-8" LONG



**NOTES:**

1. ALL BURNING METHODS PROHIBITED
2. ALL BOLT HOLES SHALL BE BEVELED PER DETAIL
3. POINT OF SWITCH SHALL BE MARKED ON GAUGE SIDE OF WEB WITH A WHITE LINE USING WATERPROOF MARKER OR PAINT
4. WRITE CALTRAIN SD NUMBER ON WEB OF RAIL WITH WATERPROOF MARKER OR PAINT


REV	DATE	BY	CHK	APP	DESCRIPTION

**PENINSULA CORRIDOR JOINT POWERS BOARD**

APPROVED BY:

*Bernard Anzures*      *Steph Chen*

ENGINEERING MANAGER      DEPUTY DIRECTOR OF ENGINEERING



1250 San Carlos Avenue  
San Carlos, CA 94070

**STANDARD DRAWINGS**

SPECIAL TRACKWORK  
NO 20 TURNOUT  
SAMSON STOCK RAIL RH TURNOUT  
RH 69'-8" LONG

CADD FILE NO.:	SD-2714
REV	DATE
0	093011
SPECIAL TRACKWORK	
STANDARD NO.:	SD-2714