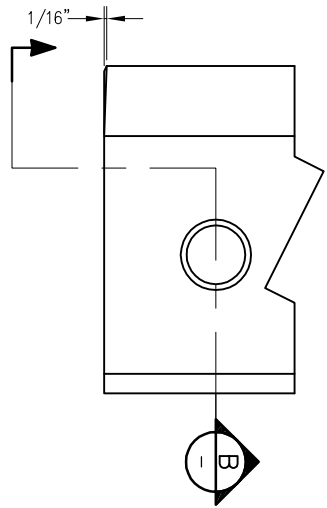
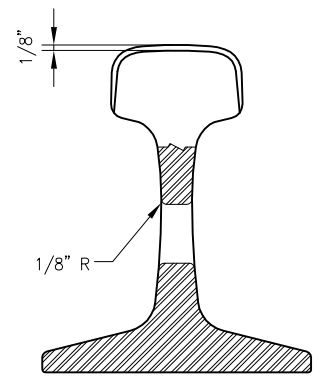


**A** PARTIAL SECTION  
SCALE: NTS



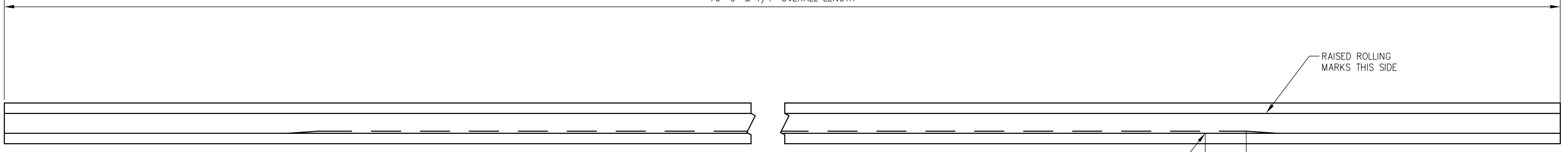
**RAIL END / HOLE BEVELING DETAILS**  
RAIL HEAD ONLY - NOT BASE



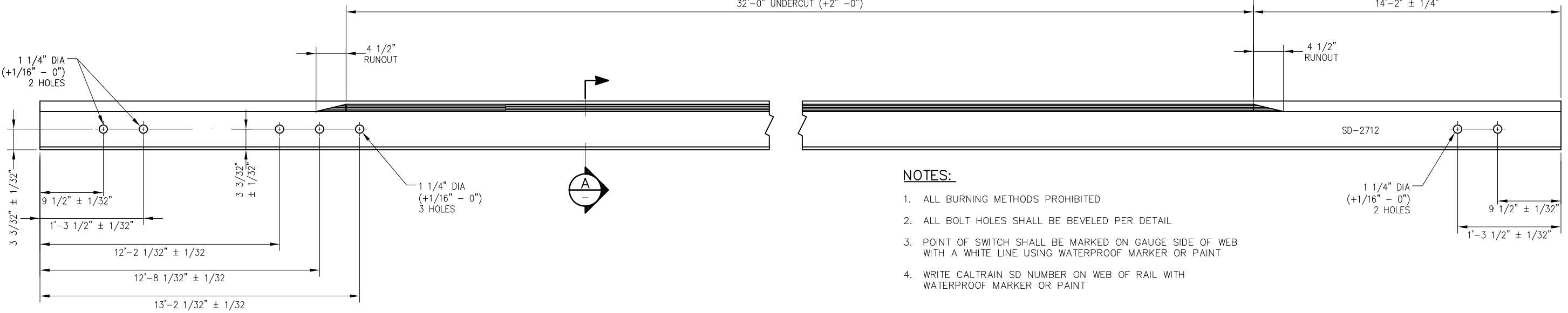
**B** SECTION  
SCALE: NTS

BILL OF MATERIAL		
ITEM	QTY	DESCRIPTION
1	1	RAIL, 136 LB RE 76'-0" LONG

76'-0" ± 1/4" OVERALL LENGTH



32'-0" UNDERCUT (+2" -0")



**NOTES:**

1. ALL BURNING METHODS PROHIBITED
2. ALL BOLT HOLES SHALL BE BEVELED PER DETAIL
3. POINT OF SWITCH SHALL BE MARKED ON GAUGE SIDE OF WEB WITH A WHITE LINE USING WATERPROOF MARKER OR PAINT
4. WRITE CALTRAIN SD NUMBER ON WEB OF RAIL WITH WATERPROOF MARKER OR PAINT

REV	DATE	BY	CHK	APP	DESCRIPTION

**PENINSULA CORRIDOR JOINT POWERS BOARD**

APPROVED BY:




ENGINEERING MANAGER      DEPUTY DIRECTOR OF ENGINEERING



**STANDARD DRAWINGS**

**SPECIAL TRACKWORK**  
**NO 20 TURNOUT**  
**SAMSON STOCK RAIL FOR LH TURNOUT**  
**RH 76'-0" LONG**

CADD FILE NO.:	SD-2712
REV	DATE
0	093011
SPECIAL TRACKWORK	
STANDARD NO.:	SD-2712