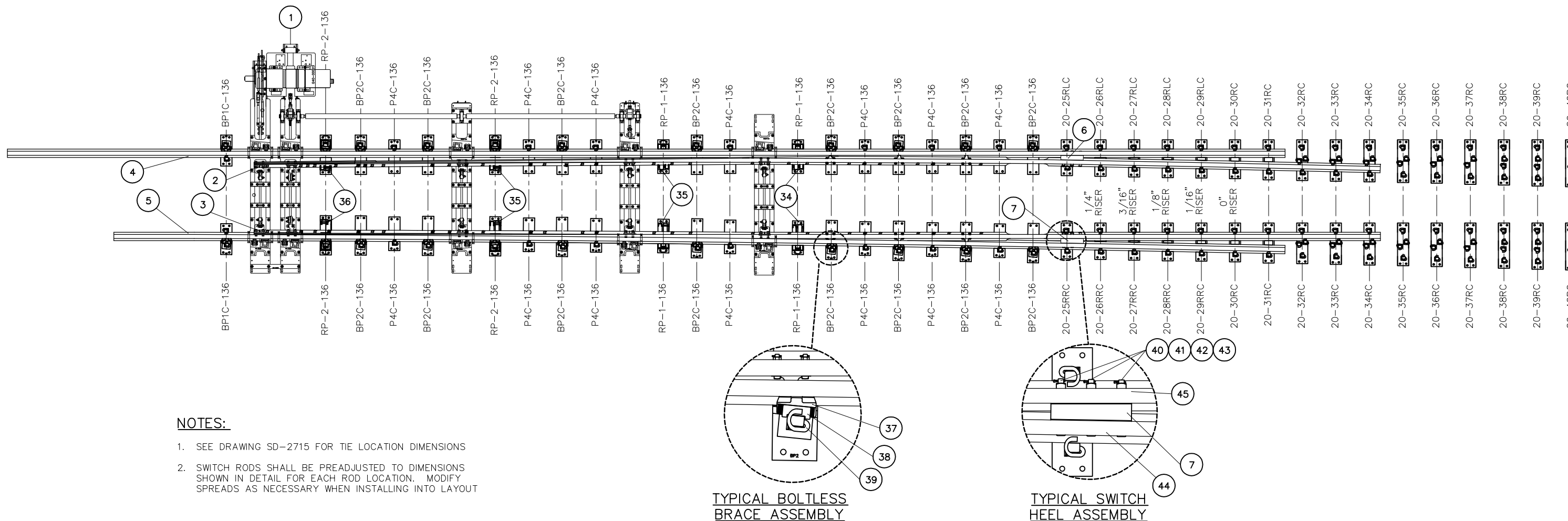



BILL OF MATERIAL				BILL OF MATERIAL			
ITEM	QTY	DESCRIPTION	DWG NO	ITEM	QTY	DESCRIPTION	DWG NO
1	1	HOLLOW SWITCH TIE & RODDING ASSEMBLY	SD-2717	23	2	SWITCH PLATE (20-30RC)	SD-2748
2	1	SAMSON POINT, 67'-0" LONG, DOUBLE REINFORCED, UR MANG TIP, LH	SD-2709	24	2	SWITCH PLATE (20-31RC)	SD-2748
3	1	SAMSON POINT, 67'-0" LONG, DOUBLE REINFORCED, UR MANG TIP, RH	SD-2710	25	2	SWITCH PLATE (20-32RC)	SD-2749
4	1	SAMSON STOCK RAIL, 76'-0" LONG, STRAIGHT, LH	SD-2713	26	2	SWITCH PLATE (20-33RC)	SD-2749
5	1	SAMSON STOCK RAIL, 69'-8" LONG, CURVED, RH	SD-2714	27	2	SWITCH PLATE (20-34RC)	SD-2749
6	1	SWITCH HEEL BLOCK, 136 LB RE, UNIFORM RISER, LH	-	28	2	SWITCH PLATE (20-35RC)	SD-2749
7	1	SWITCH HEEL BLOCK, 136 LB RE, UNIFORM RISER, RH	-	29	2	SWITCH PLATE (20-36RC)	SD-2749
8	2	SWITCH PLATE (BP1C-136)	SD-2301	30	2	SWITCH PLATE (20-37RC)	SD-2749
9	16	SWITCH PLATE (BP2C-136)	SD-2301	31	2	SWITCH PLATE (20-38RC)	SD-2750
10	14	SWITCH PLATE (P4C-136)	SD-2301	32	2	SWITCH PLATE (20-39RC)	SD-2750
11	4	SWITCH ROLLER PLATE (RP-1-136) SCHWIHAG	SD-2311	33	2	SWITCH PLATE (20-40RC)	SD-2750
12	4	SWITCH ROLLER PLATE (RP-2-136) SCHWIHAG	SD-2312	34	2	ROLLER SCHWIHAG, SINGLE	-
13	1	SWITCH PLATE (20-25RLC)	SD-2747	35	4	ROLLER SCHWIHAG, DOUBLE	-
14	1	SWITCH PLATE (20-25RRC)	SD-2747	36	2	ROLLER SCHWIHAG, TRIPLE	-
15	1	SWITCH PLATE (20-26RLC)	SD-2747	37	22	BRACE, BOLTLESS, 136 LB RE 'SUREFIT'	-
16	1	SWITCH PLATE (20-26RRC)	SD-2747	38	22	SERRATED WASHER FOR BOLTLESS BRACE	-
17	1	SWITCH PLATE (20-27RLC)	SD-2747	39	142	CLIP, PANDROL, E2055	-
18	1	SWITCH PLATE (20-27RRC)	SD-2747	40	6	BOLT, 1 1/8" DIA X 10 1/2" LONG, SQUARE HEAD, DRILLED @ 10 1/16", GR 5	-
19	1	SWITCH PLATE (20-28RLC)	SD-2748	41	6	SPRING WASHER FOR 1 1/8" DIA BOLT	-
20	1	SWITCH PLATE (20-28RRC)	SD-2748	42	6	NUT, 1 1/8" DIA HEAVY SQUARE, GR 5	-
21	1	SWITCH PLATE (20-29RLC)	SD-2748	43	6	COTTER PIN, 1/4" DIA X 2 1/4" LONG	-
22	1	SWITCH PLATE (20-29RRC)	SD-2748	44	2	FISH PLATE, 3-HOLE, 1/2" D-BAR X 16" LONG, HEADLOCKED	-
				45	2	FISH PLATE, 3-HOLE, 1/2" D-BAR X 16" LONG	-



NOTES:

1. SEE DRAWING SD-2715 FOR TIE LOCATION DIMENSIONS
2. SWITCH RODS SHALL BE PREADJUSTED TO DIMENSIONS SHOWN IN DETAIL FOR EACH ROD LOCATION. MODIFY SPREADS AS NECESSARY WHEN INSTALLING INTO LAYOUT

REV	DATE	BY	CHK	APP	DESCRIPTION

PENINSULA CORRIDOR JOINT POWERS BOARD		STANDARD DRAWINGS		CADD FILE NO.: SD-2706	
APPROVED BY: <i>Bernard Anzures</i> <i>Steph Chen</i>		 1250 San Carlos Avenue San Carlos, CA 94070		REV 0	DATE 093011
ENGINEERING MANAGER DEPUTY DIRECTOR OF ENGINEERING				SPECIAL TRACKWORK NO 20 TURNOUT RH SWITCH PACK WITH HST SWITCH MACHINE ON MAINLINE SIDE	