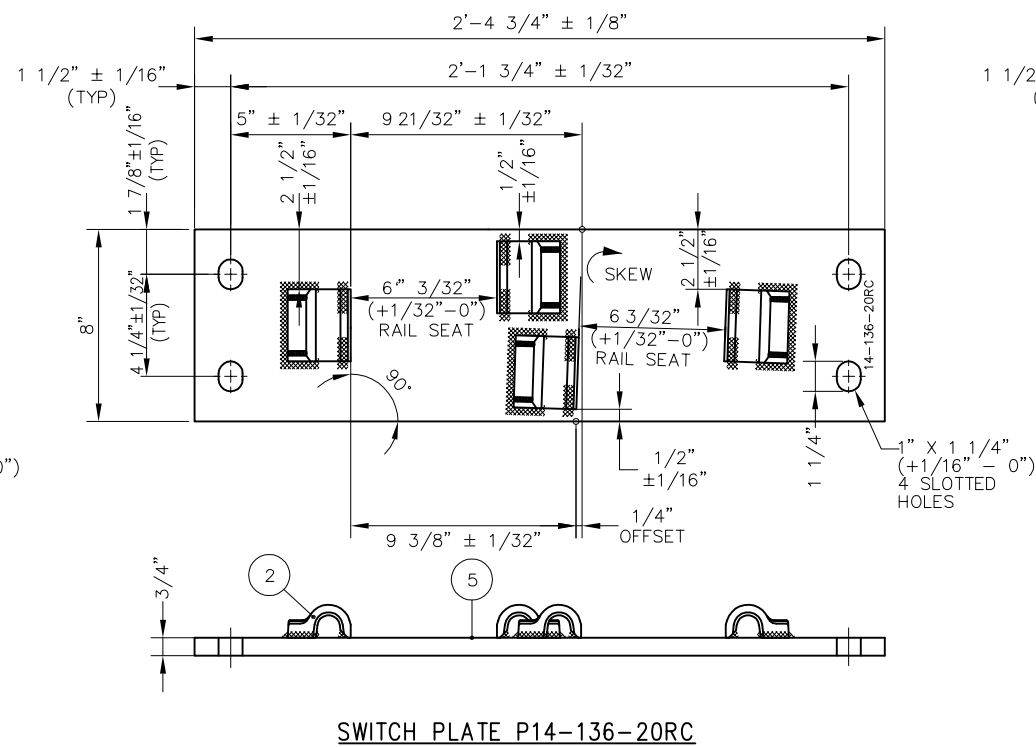
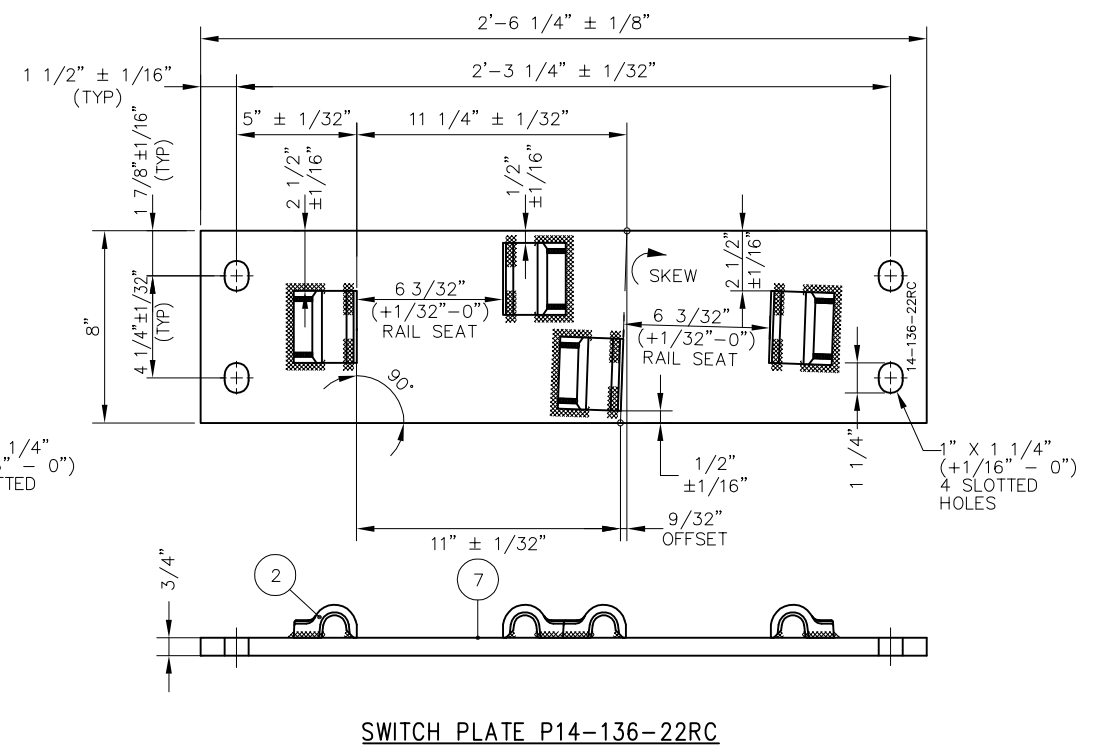


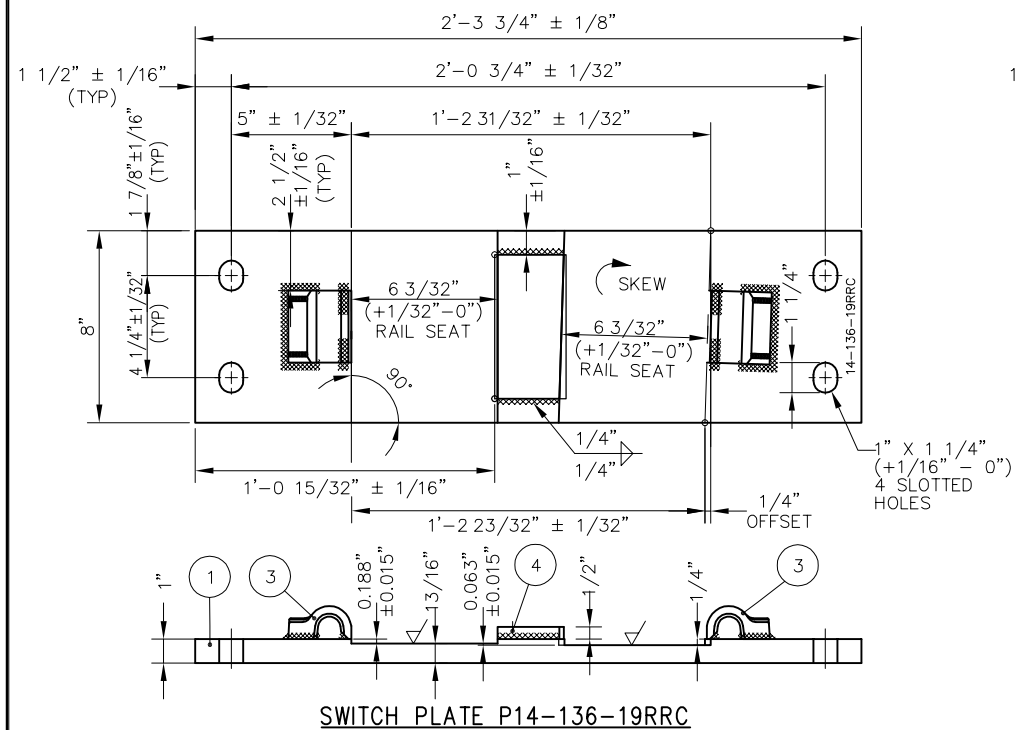
SWITCH PLATE P14-136-19RLC



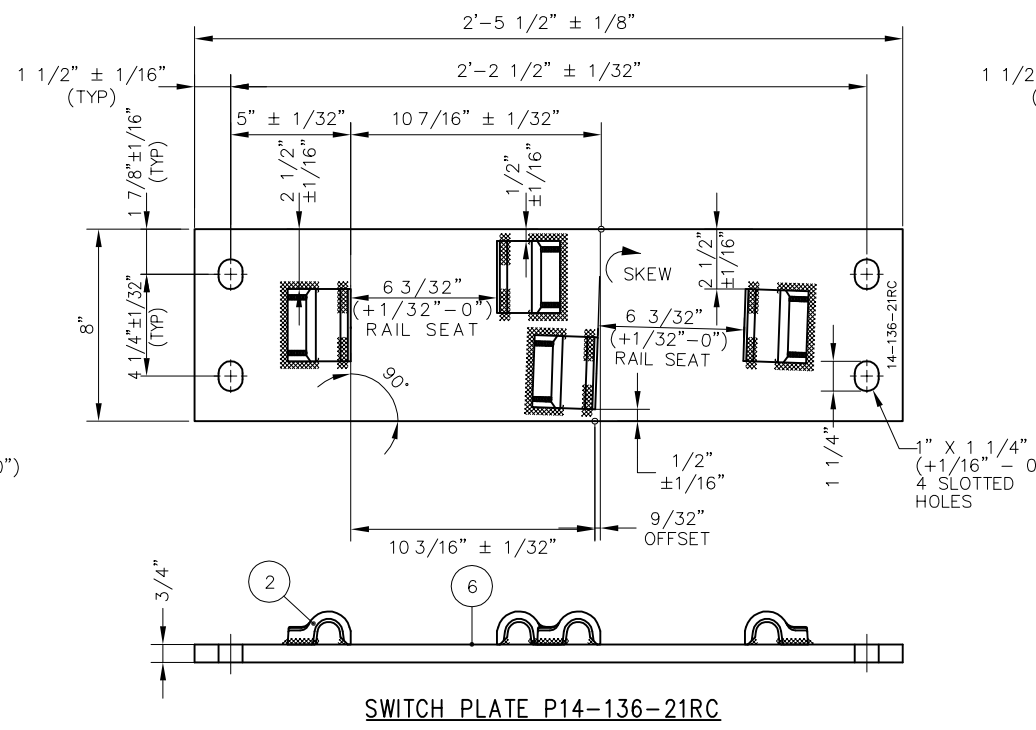
SWITCH PLATE P14-136-20RC



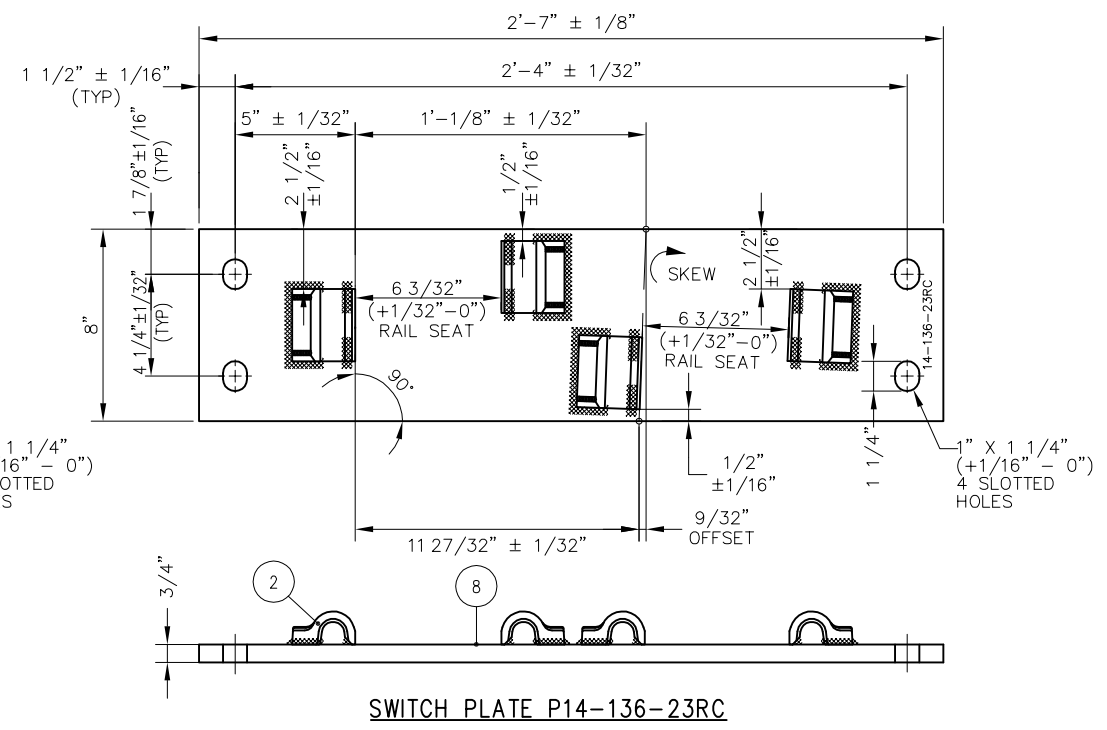
SWITCH PLATE P14-136-22RC



SWITCH PLATE P14-136-19RRC



SWITCH PLATE P14-136-21RC



SWITCH PLATE P14-136-23RC


BILL OF MATERIALS	
ITEM	DESCRIPTION
1	FLAT BAR, ASTM A36, 1" x 8" x 2'-3 3/4"
2	SHOULDER, PANDROL, FORGED TONGUELESS, TYPE 1
3	SHOULDER, PANDROL, FORGED TONGUELESS, TYPE 5
4	FLAT BAR, ASTM A36, 1/2" x 6" x 3"

BILL OF MATERIALS	
ITEM	DESCRIPTION
5	FLAT BAR, ASTM A36, 3/4" x 8" x 2'-4 3/4"
6	FLAT BAR, ASTM A36, 3/4" x 8" x 2'-5 1/2"
7	FLAT BAR, ASTM A36, 3/4" x 8" x 2'-6 1/4"
8	FLAT BAR, ASTM A36, 3/4" x 8" x 2'-7"

NOTES:

- I.D. CHARACTERS SHALL BE 1/2" MINIMUM HEIGHT CLEARLY STAMPED AS SHOWN
- WELDS SHALL BE DRESSED FLUSH WITH SHOULDER & NOT PROTRUDE INTO RAIL SEAT
- SLOTTED HOLE CENTERS ARE INDICATED ON DRAWING

REV	DATE	BY	CHK	APP	DESCRIPTION

PENINSULA CORRIDOR JOINT POWERS BOARD		STANDARD DRAWINGS	GADD FILE NO: SD-2644
APPROVED BY: <i>Bernard Anagnostis</i> <i>Steph Chen</i>		SPECIAL TRACKWORK NO 14 TURNOUT SWITCH PLATES FOR RH TURNOUT 14-19RLC/RRC, 14-20RC THROUGH 14-23RC	REV: 0 DATE: 093011
ENGINEERING MANAGER DEPUTY DIRECTOR OF ENGINEERING			STANDARD NO.: SD-2644
 1250 San Carlos Avenue San Carlos, CA 94070			