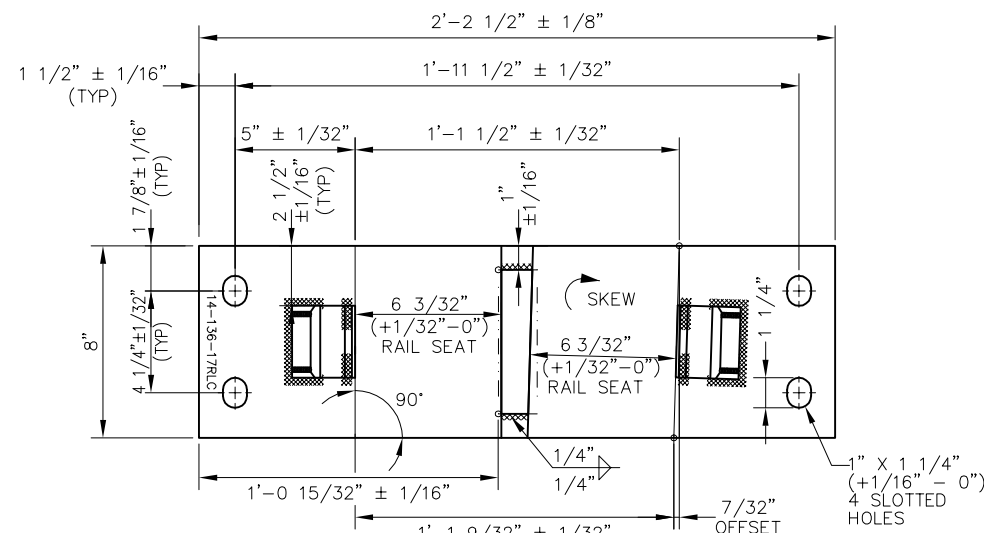
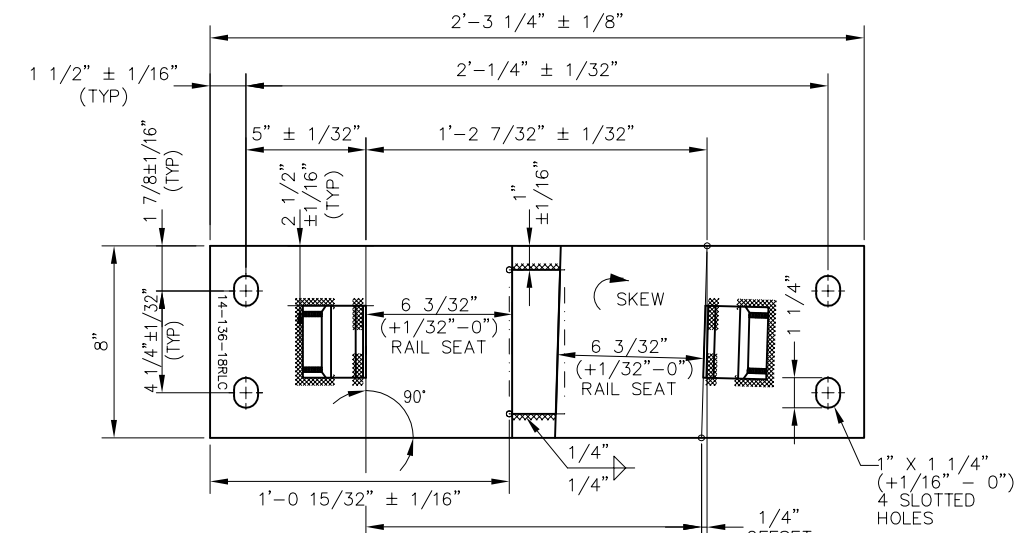


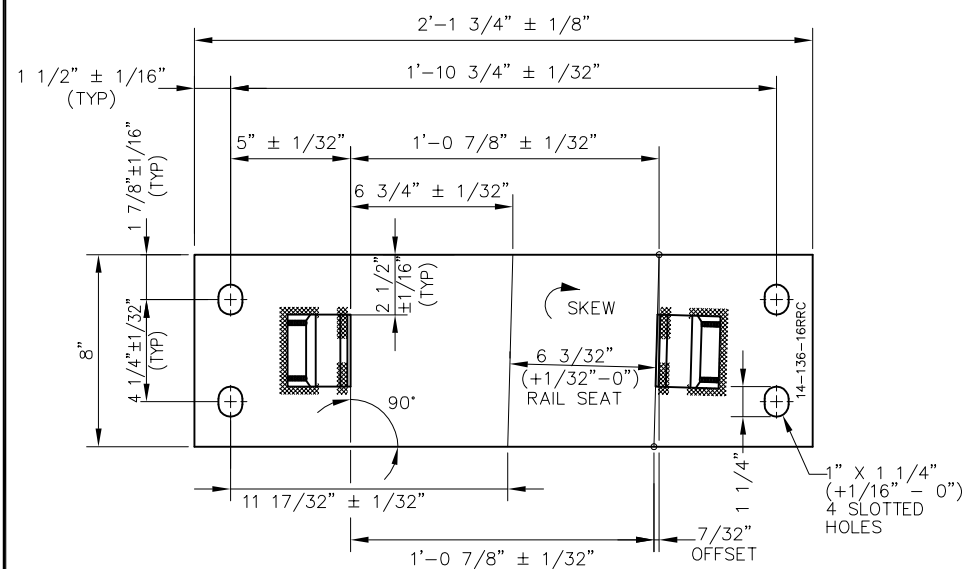
SWITCH PLATE P14-136-16RLC



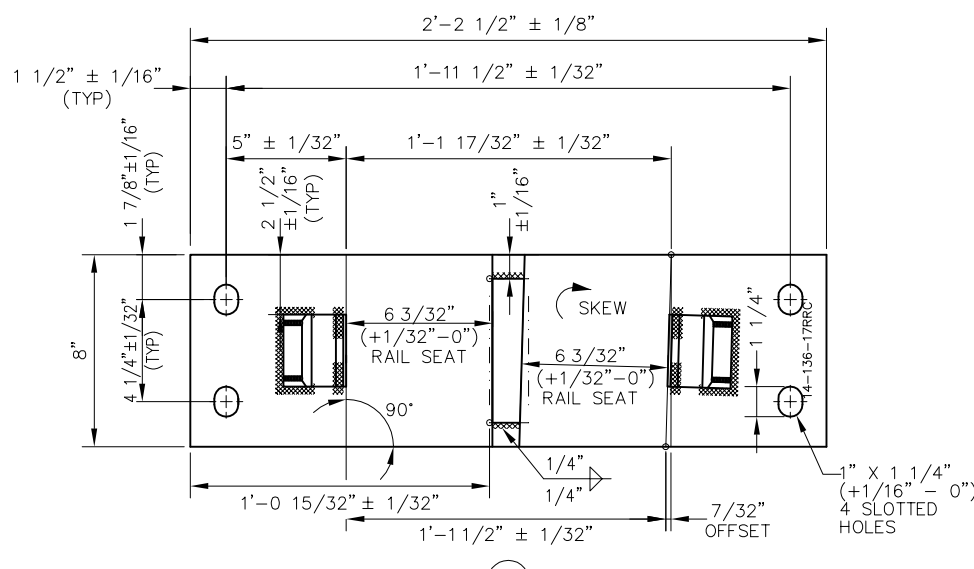
SWITCH PLATE P14-136-17RLC



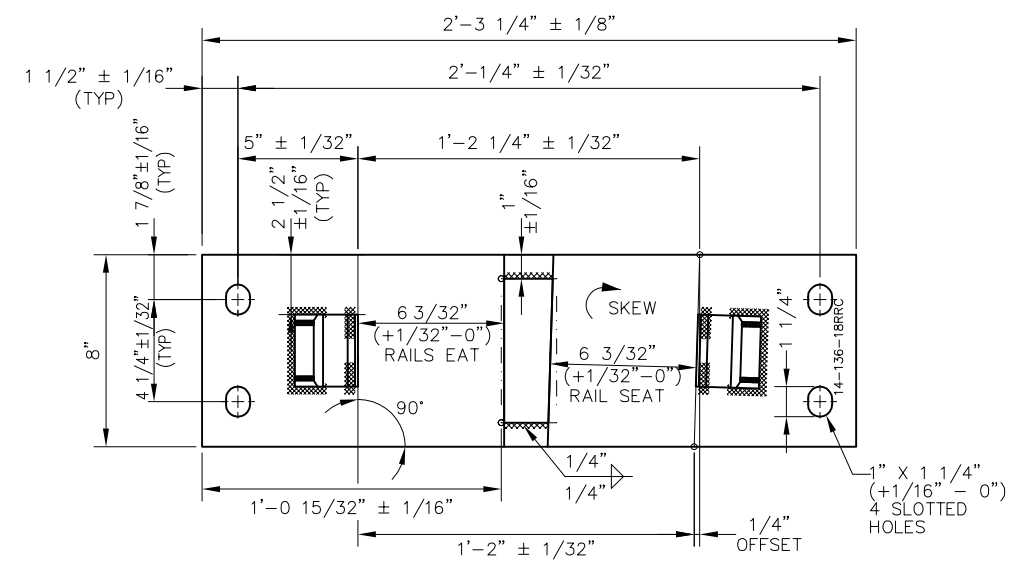
SWITCH PLATE P14-136-18RLC



SWITCH PLATE P14-136-16RRC



SWITCH PLATE P14-136-17RRC



SWITCH PLATE P14-136-18RRC

BILL OF MATERIALS	
ITEM	DESCRIPTION
1	FLAT BAR, ASTM A36, 1" x 8" x 2'-1 3/4"
2	SHOULDER, PANDROL, FORGED TONGUELESS, TYPE 1
3	SHOULDER, PANDROL, FORGED TONGUELESS, TYPE 5
4	FLAT BAR, ASTM A36, 1/2" x 6" x 1 5/8"

BILL OF MATERIALS	
ITEM	DESCRIPTION
5	FLAT BAR, ASTM A36, 1/2" x 6" x 2 5/16"
6	FLAT BAR, ASTM A36, 1" x 8" x 2'-2 1/2"
7	FLAT BAR, ASTM A36, 1" x 8" x 2'-3 1/4"

**NOTES:**

- I.D. CHARACTERS SHALL BE 1/2" MINIMUM HEIGHT CLEARLY STAMPED AS SHOWN
- WELDS SHALL BE DRESSED FLUSH WITH SHOULDER & NOT PROTRUDE INTO RAIL SEAT
- SLOTTED HOLE CENTERS ARE INDICATED ON DRAWING

**PENINSULA CORRIDOR JOINT POWERS BOARD**

APPROVED BY:

*Bernard Anzures* *Steph Chen*  
ENGINEERING MANAGER DEPUTY DIRECTOR OF ENGINEERING



**STANDARD DRAWINGS**

SPECIAL TRACKWORK  
NO 14 TURNOUT  
SWITCH PLATES FOR RH TURNOUT  
14-16RLC/RRC THROUGH 14-18RLC/RRC

CADD FILE NO: SD-2643	
REV 0	DATE 093011
SPECIAL TRACKWORK	
STANDARD NO: SD-2643	

REV	DATE	BY	CHK	APP	DESCRIPTION