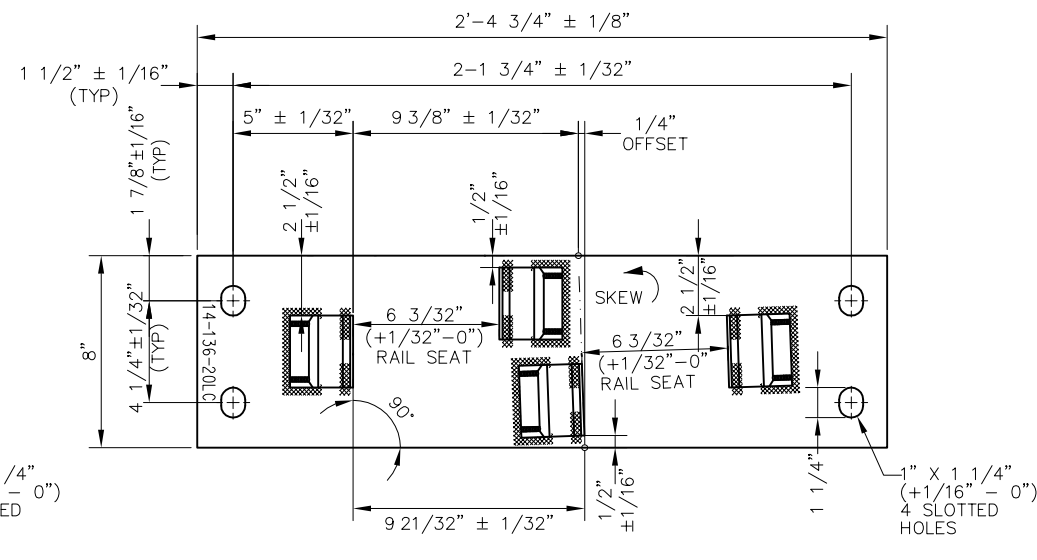
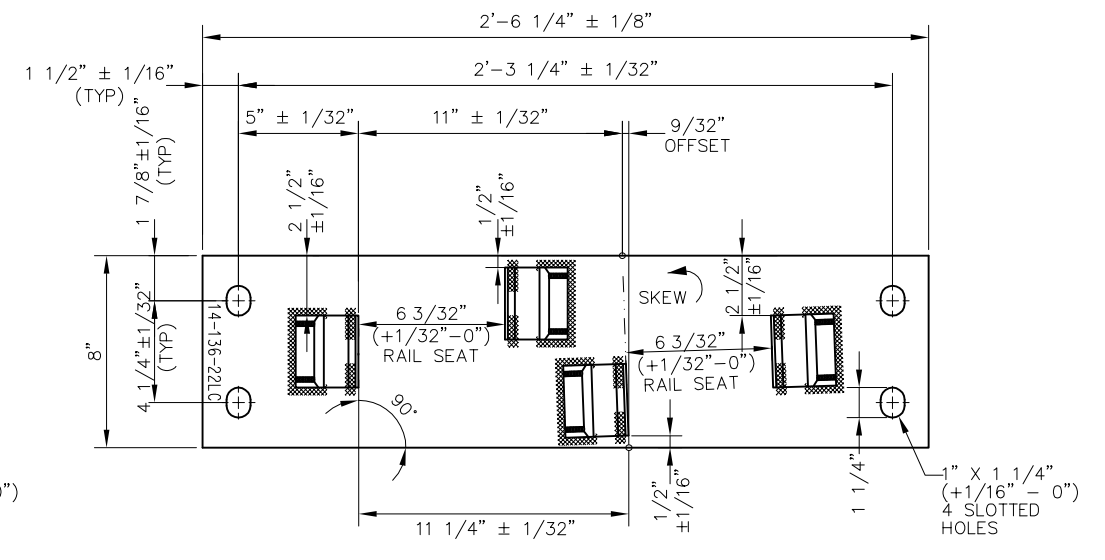


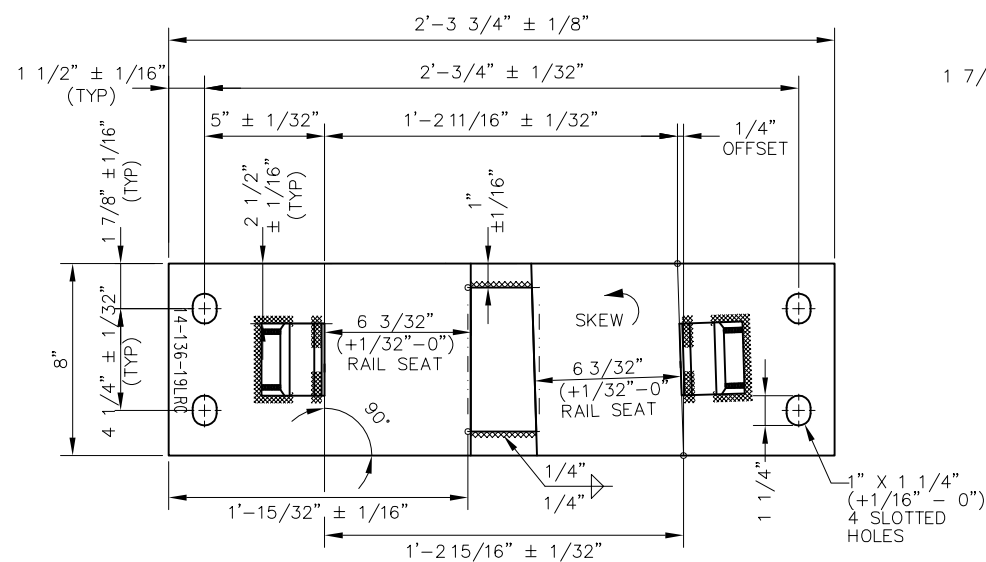
SWITCH PLATE P14-136-19LLC



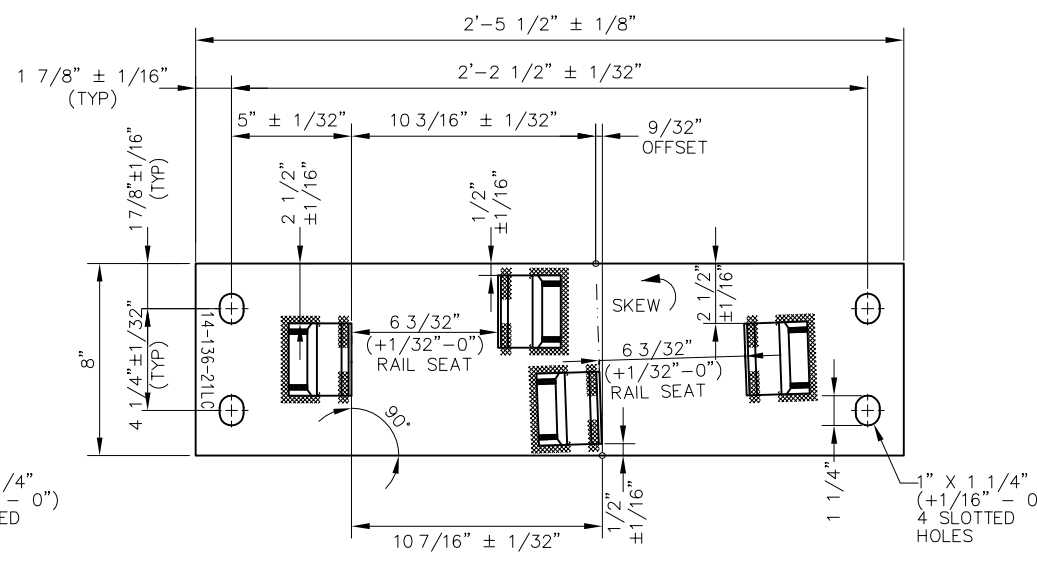
SWITCH PLATE P14-136-20LC



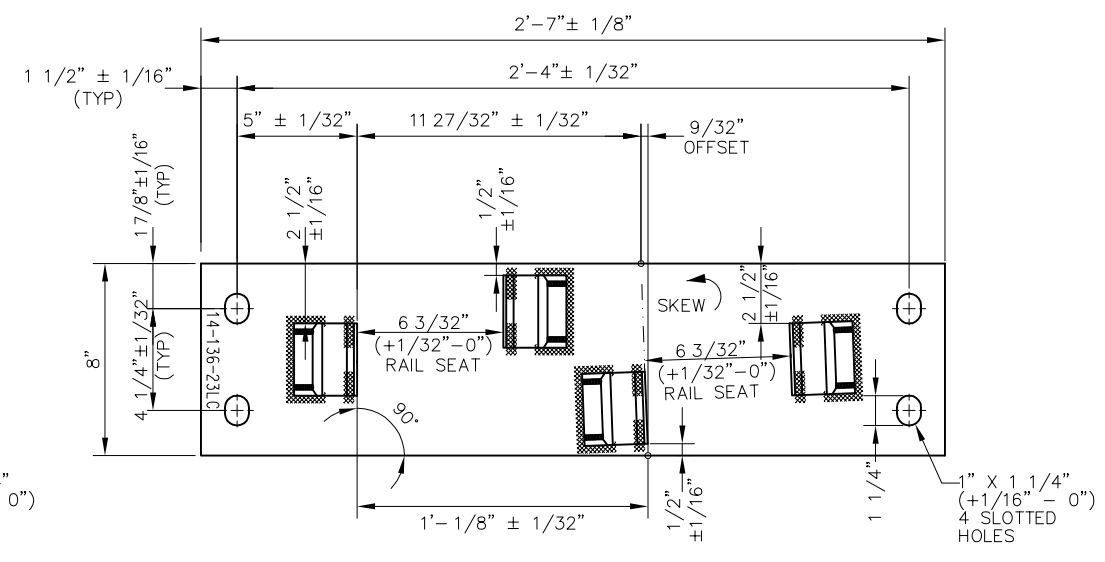
SWITCH PLATE P14-136-22LC



SWITCH PLATE P14-136-19LRC



SWITCH PLATE P14-136-21LC



SWITCH PLATE P14-136-23LC

BILL OF MATERIALS	
ITEM	DESCRIPTION
1	FLAT BAR, ASTM A36, 1" x 8" x 2'-3 3/4"
2	SHOULDER, PANDROL, FORGED TONGUELESS, TYPE 1
3	SHOULDER, PANDROL, FORGED TONGUELESS, TYPE 5
4	FLAT BAR, ASTM A36, 1/2" x 6" x 3"

BILL OF MATERIALS	
ITEM	DESCRIPTION
5	FLAT BAR, ASTM A36, 3/4" x 8" x 2'-4 3/4"
6	FLAT BAR, ASTM A36, 3/4" x 8" x 2'-5 1/2"
7	FLAT BAR, ASTM A36, 3/4" x 8" x 2'-6 1/4"
8	FLAT BAR, ASTM A36, 3/4" x 8" x 2'-7"

NOTES:

- I.D. CHARACTERS SHALL BE 1/2" MINIMUM HEIGHT CLEARLY STAMPED AS SHOWN
- WELDS SHALL BE DRESSED FLUSH WITH SHOULDER & NOT TO PROTRUDE INTO RAIL SEAT
- SLOTTED HOLE CENTERS ARE INDICATED ON DRAWING

PENINSULA CORRIDOR JOINT POWERS BOARD

APPROVED BY:

*Bernard Anagnost* *Steph Chen*  
ENGINEERING MANAGER DEPUTY DIRECTOR OF ENGINEERING



STANDARD DRAWINGS

SPECIAL TRACKWORK  
NO 14 TURNOUT  
SWITCH PLATES FOR LH TURNOUT  
14-19LLC/LRC, 14-20LC THROUGH 14-23 LC

CADD FILE NO.: SD-2641	
REV 0	DATE 093011
SPECIAL TRACKWORK	
STANDARD NO.: SD-2641	

REV	DATE	BY	CHK	APP	DESCRIPTION