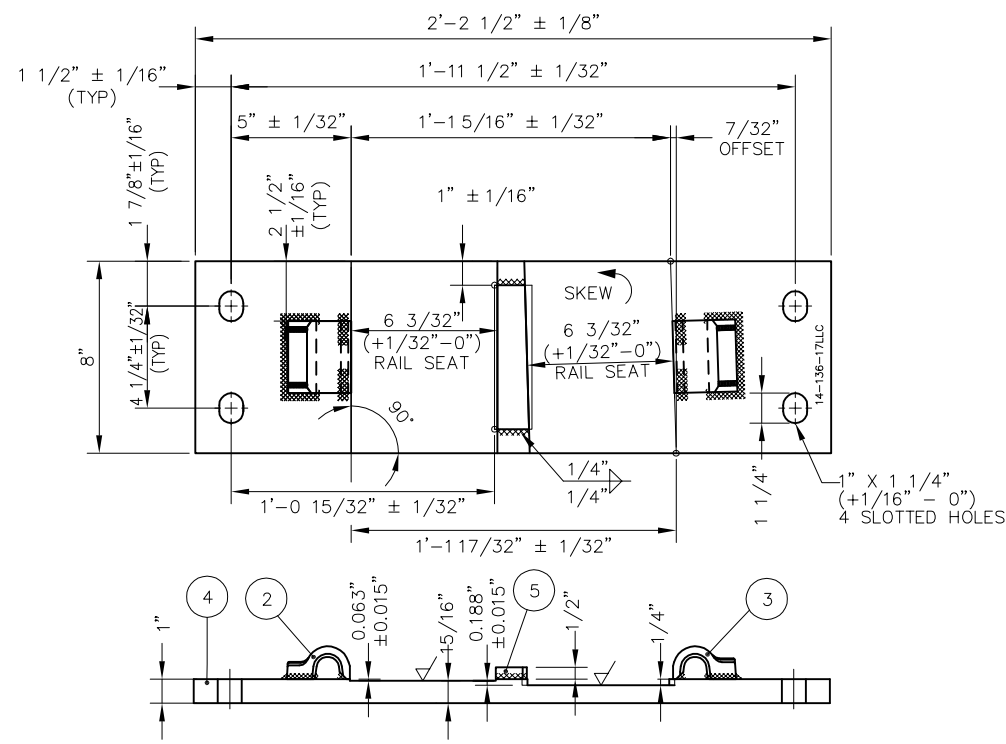
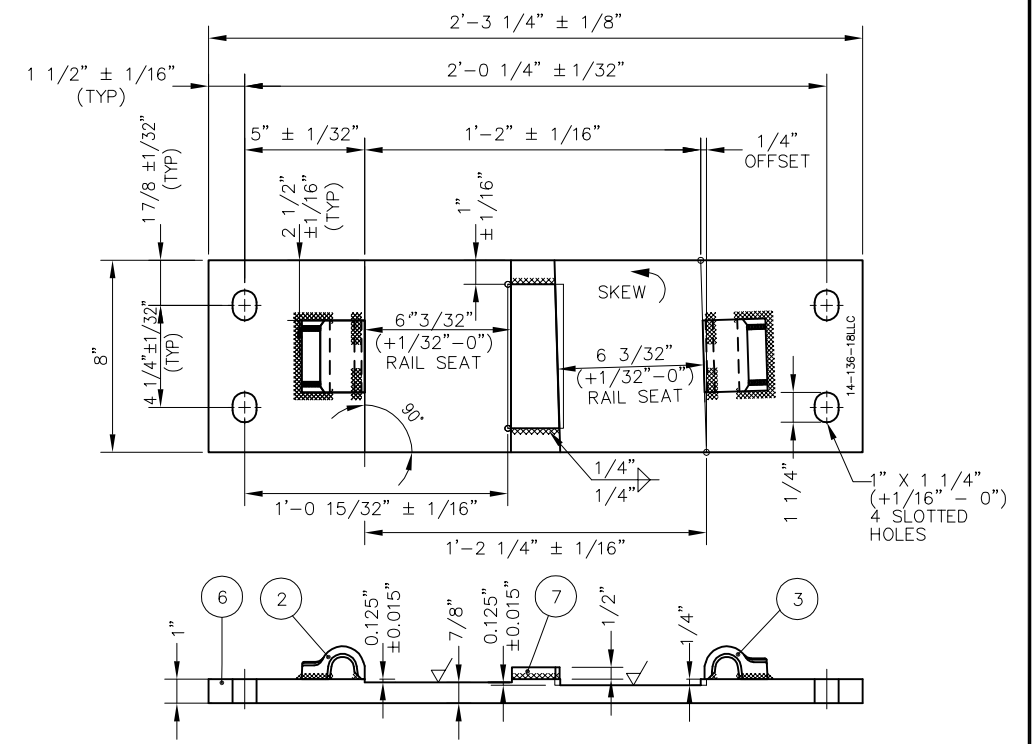


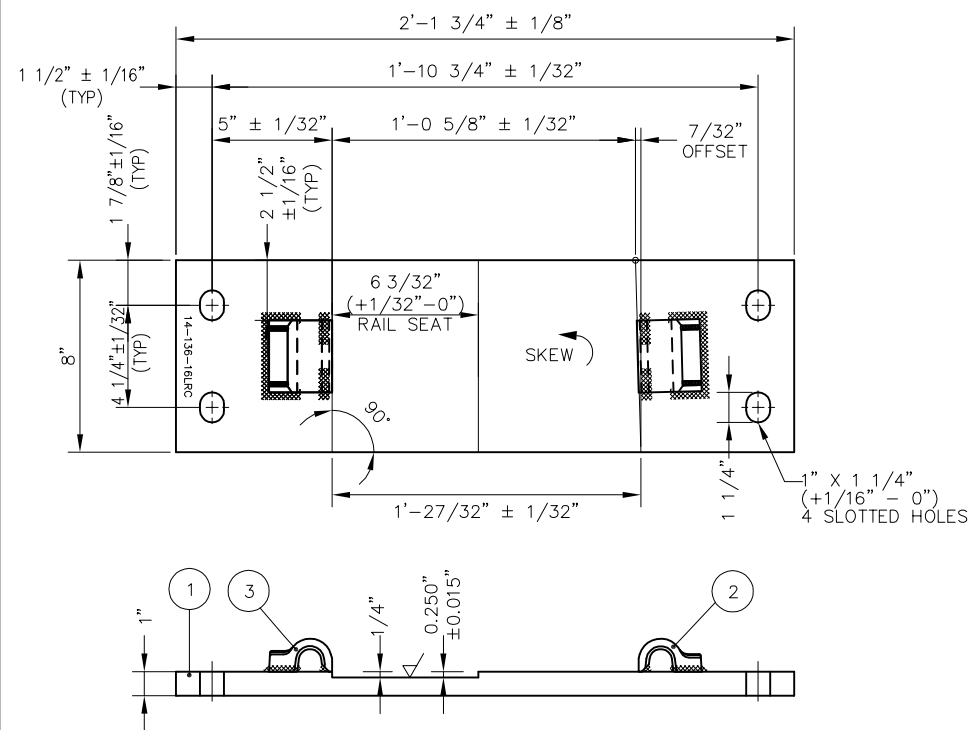
SWITCH PLATE P14-136-16LLC



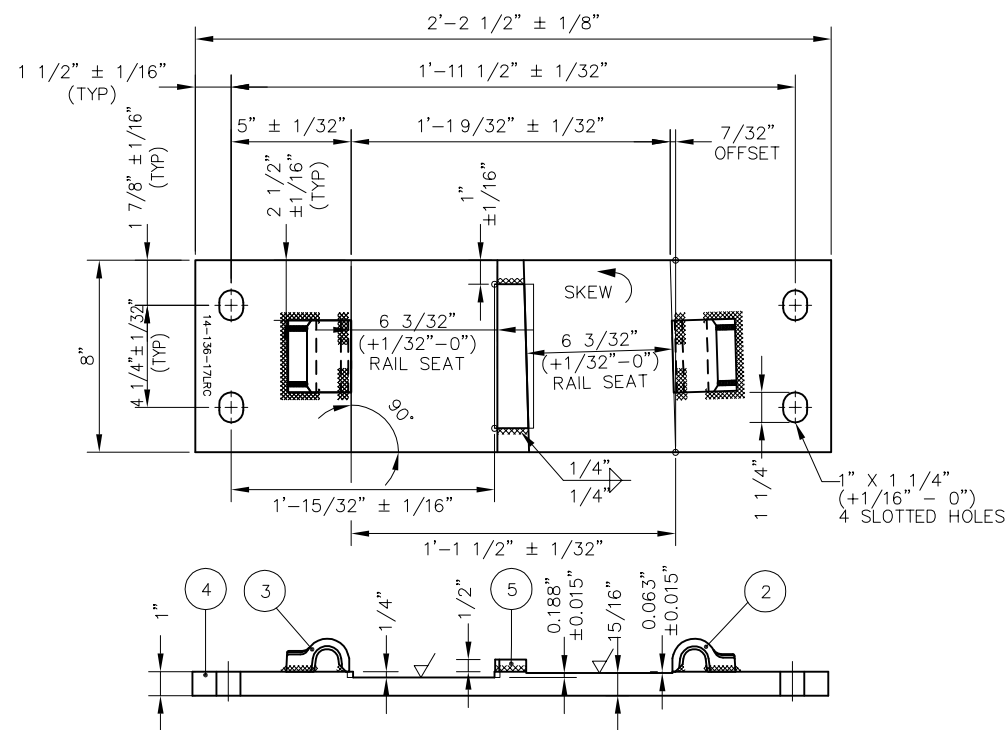
SWITCH PLATE P14-136-17LLC



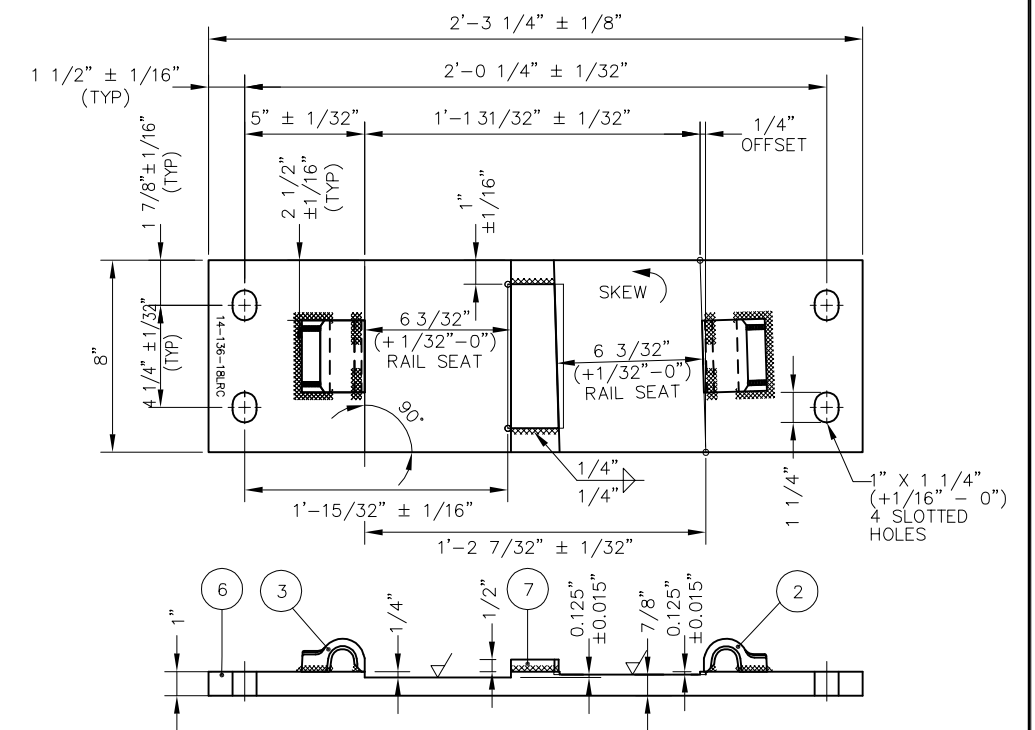
SWITCH PLATE P14-136-18LLC



SWITCH PLATE P14-136-16LRC



SWITCH PLATE P14-136-17LRC



SWITCH PLATE P14-136-18LRC

BILL OF MATERIALS	
ITEM	DESCRIPTION
1	FLAT BAR, ASTM A36, 1" x 8" x 2'-1 3/4"
2	SHOULDER, PANDROL, FORGED TONGUELESS, TYPE 1
3	SHOULDER, PANDROL, FORGED TONGUELESS, TYPE 5
4	FLAT BAR, ASTM A36, 1" X 8" X 2'-2 1/2"

BILL OF MATERIALS	
ITEM	DESCRIPTION
5	FLAT BAR, ASTM A36, 1/2" X 6" X 1 5/8"
6	FLAT BAR, ASTM A36, 1" X 8" X 2'-3 1/4"
7	FLAT BAR, ASTM A36, 1/2" X 6" X 2 5/16"

**NOTES:**

- I.D. CHARACTERS SHALL BE 1/2" MINIMUM HEIGHT CLEARLY STAMPED AS SHOWN
- WELDS SHALL BE DRESSED FLUSH WITH SHOULDER & NOT TO PROTRUDE INTO RAIL SEAT
- SLOTTED HOLE CENTERS ARE INDICATED ON DRAWING

REV	DATE	BY	CHK	APP	DESCRIPTION

<b>PENINSULA CORRIDOR JOINT POWERS BOARD</b>		<b>STANDARD DRAWINGS</b>		CADD FILE NO: SD-2640
APPROVED BY:		SPECIAL TRACKWORK NO 14 TURNOUT SWITCH PLATES FOR LH TURNOUT 14-16LLC/LRC THROUGH 14-18LLC/LRC		REV 0
 ENGINEERING MANAGER		 DEPUTY DIRECTOR OF ENGINEERING		DATE 093011
 1250 San Carlos Avenue San Carlos, CA 94070		STANDARD NO.: SD-2640		SPECIAL TRACKWORK STANDARD NO.: SD-2640