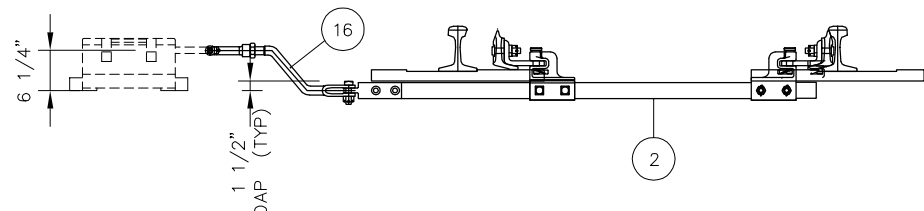
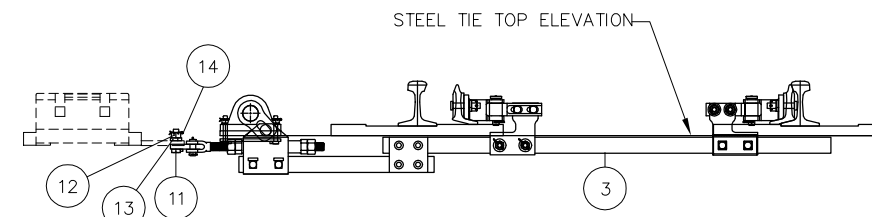


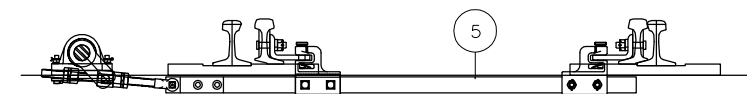
SWITCH ROD (ROD NO 1) ASSEMBLY
 LOCK ROD CONNECTION SHOWN
 (VIEW FROM HEEL TOWARDS PS)



SWITCH ROD (ROD NO 1) ASSEMBLY
 POINT DETECTOR ROD CONNECTION SHOWN
 (VIEW FROM HEEL TOWARDS PS)



DRIVE ROD (ROD NO 2) ASSEMBLY
 FRONT HELPER ROD CRANK ATTACHES TO BASKET
 (VIEW FROM HEEL TOWARDS PS)






REAR HELPER (ROD NO 4) DRIVE ROD ASSEMBLY
 REAR HELPER ROD CRANK ATTACHES TO ROD PIN

BILL OF MATERIAL			
ITEM	QTY	DESCRIPTION	DWG NO
1	1	ROTARY ASSIST ASSEMBLY FOR NO 14-136 LB RE TURNOUT	-
2	1	SWITCH ROD NO 1, FOR POINT DETECTOR/LOCK ROD, (14-136-1)	SD-2639
3	1	SWITCH ROD NO 2, DRIVE, C/W BASKET (14-136-2)	SD-2639
4	1	SWITCH ROD NO 3, THROW, (14-136-3)	SD-2639
5	1	SWITCH ROD NO 4, THROW, (14-136-4)	SD-2639
6	2	ROD POINT BRACKET, DETECTOR/LOCK ROD, HOLES AT 2 7/8" ARB*	-
7	1	ROD POINT BRACKET, THROW ROD, ANTI-ROLL, HOLES AT 2 7/8" ARB* LH	-
8	1	ROD POINT BRACKET, THROW ROD, ANTI-ROLL, HOLES AT 2 7/8" ARB* RH	-
9	4	ROD POINT BRACKET, HOLES AT 2 3/8" ARB* C/W SQ BOLTS	-
10	1	DROP LUG FOR US&S M23 SWITCH MACHINE DRIVE BAR	-
11	1	BOLT, 7/8" DIA x 3" LONG, DRILLED 2 9/16" BELOW HEAD, HEAVY HEX, GR 5	-
12	1	NUT, 7/8" DIA SLOTTED HEAVY HEX, GR 8	-
13	1	SPRING WASHER, 7/8" DIA	-
14	1	COTTER PIN, 3/16" DIA x 1 3/4" LONG	-
15	1	LOCK ROD, FOR M23 SWITCH MACHINE, HST	-
16	1	DETECTOR ROD, FOR M23 SWITCH MACHINE, HST	-

ARB* - ABOVE RAIL BASE

REV	DATE	BY	CHK	APP	DESCRIPTION

PENINSULA CORRIDOR JOINT POWERS BOARD		STANDARD DRAWINGS		CADD FILE NO.: SD-2638
APPROVED BY:				REV: 0 DATE: 093011
 				SPECIAL TRACKWORK NO 14 TURNOUT HOLLOW STEEL TIE ROD ASSEMBLY SWITCH MACHINE ON RH SIDE
ENGINEERING MANAGER		DEPUTY DIRECTOR OF ENGINEERING		STANDARD NO.: SD-2638

1250 San Carlos Avenue
 San Carlos, CA 94070