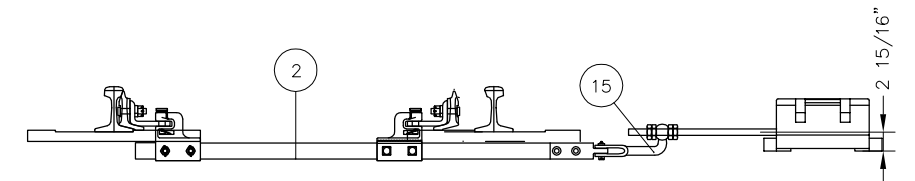
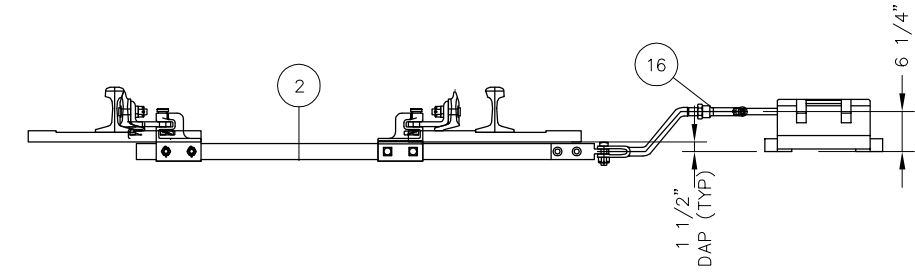


BILL OF MATERIAL			
ITEM	QTY	DESCRIPTION	DWG NO
1	1	ROTARY ASSIST ASSEMBLY FOR NO 14-136 LB RE TURNOUT	-
2	1	SWITCH ROD NO 1, FOR POINT DETECTOR/LOCK ROD, (14-136-1)	SD-2639
3	1	SWITCH ROD NO 2, DRIVE, C/W BASKET (14-136-2)	SD-2639
4	1	SWITCH ROD NO 3, THROW, (14-136-3)	SD-2639
5	1	SWITCH ROD NO 4, THROW, (14-136-4)	SD-2639
6	2	ROD POINT BRACKET, DETECTOR/LOCK ROD, HOLES AT 2 7/8" ARB*	-
7	1	ROD POINT BRACKET, THROW ROD, ANTI-ROLL, HOLES AT 2 7/8" ARB* LH	-
8	1	ROD POINT BRACKET, THROW ROD, ANTI-ROLL, HOLES AT 2 7/8" ARB* RH	-
9	4	ROD POINT BRACKET, HOLES AT 2 3/8" ARB*, C/W SQ BOLTS	-
10	1	DROP LUG FOR US&S M23 SWITCH MACHINE DRIVE BAR	-
11	1	BOLT, 7/8" DIA x 3" LONG, DRILLED 2 9/16" BELOW HEAD, HEAVY HEX, GR 5	-
12	1	NUT, 7/8" DIA SLOTTED HEAVY HEX, GR 8	-
13	1	SPRING WASHER, 7/8" DIA	-
14	1	COTTER PIN, 3/16" DIA x 1 3/4" LONG	-
15	1	LOCK ROD, FOR M23 SWITCH MACHINE, HST	-
16	1	DETECTOR ROD, FOR M23 SWITCH MACHINE, HST	-

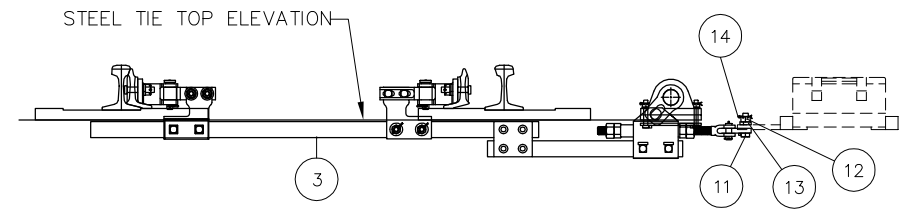
ARB* - ABOVE RAIL BASE



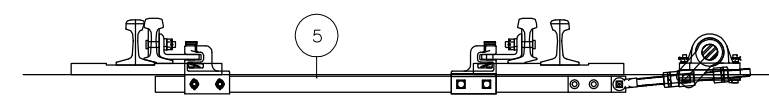
SWITCH ROD (ROD NO 1) ASSEMBLY
LOCK ROD CONNECTION SHOWN
(VIEW FROM HEEL TOWARDS PS)



SWITCH ROD (ROD NO 1) ASSEMBLY
POINT DETECTOR ROD CONNECTION SHOWN
(VIEW FROM HEEL TOWARDS PS)



DRIVE ROD (ROD NO 2) ASSEMBLY
FRONT HELPER ROD CRANK ATTACHES TO BASKET
(VIEW FROM HEEL TOWARDS PS)



REAR HELPER (ROD NO 4) DRIVE ROD ASSEMBLY
REAR HELPER ROD CRANK ATTACHES TO ROD PIN

REV	DATE	BY	CHK	APP	DESCRIPTION

PENINSULA CORRIDOR JOINT POWERS BOARD

APPROVED BY:

Bernard Anzures *Steph Chen*

ENGINEERING MANAGER DEPUTY DIRECTOR OF ENGINEERING



1250 San Carlos Avenue
San Carlos, CA 94070

STANDARD DRAWINGS

**SPECIAL TRACKWORK
NO 14 TURNOUT
HOLLOW STEEL TIE ROD ASSEMBLY
SWITCH MACHINE ON LH SIDE**

CADD FILE NO.:	SD-2637
REV	DATE
0	093011
SPECIAL TRACKWORK	
STANDARD NO.:	SD-2637