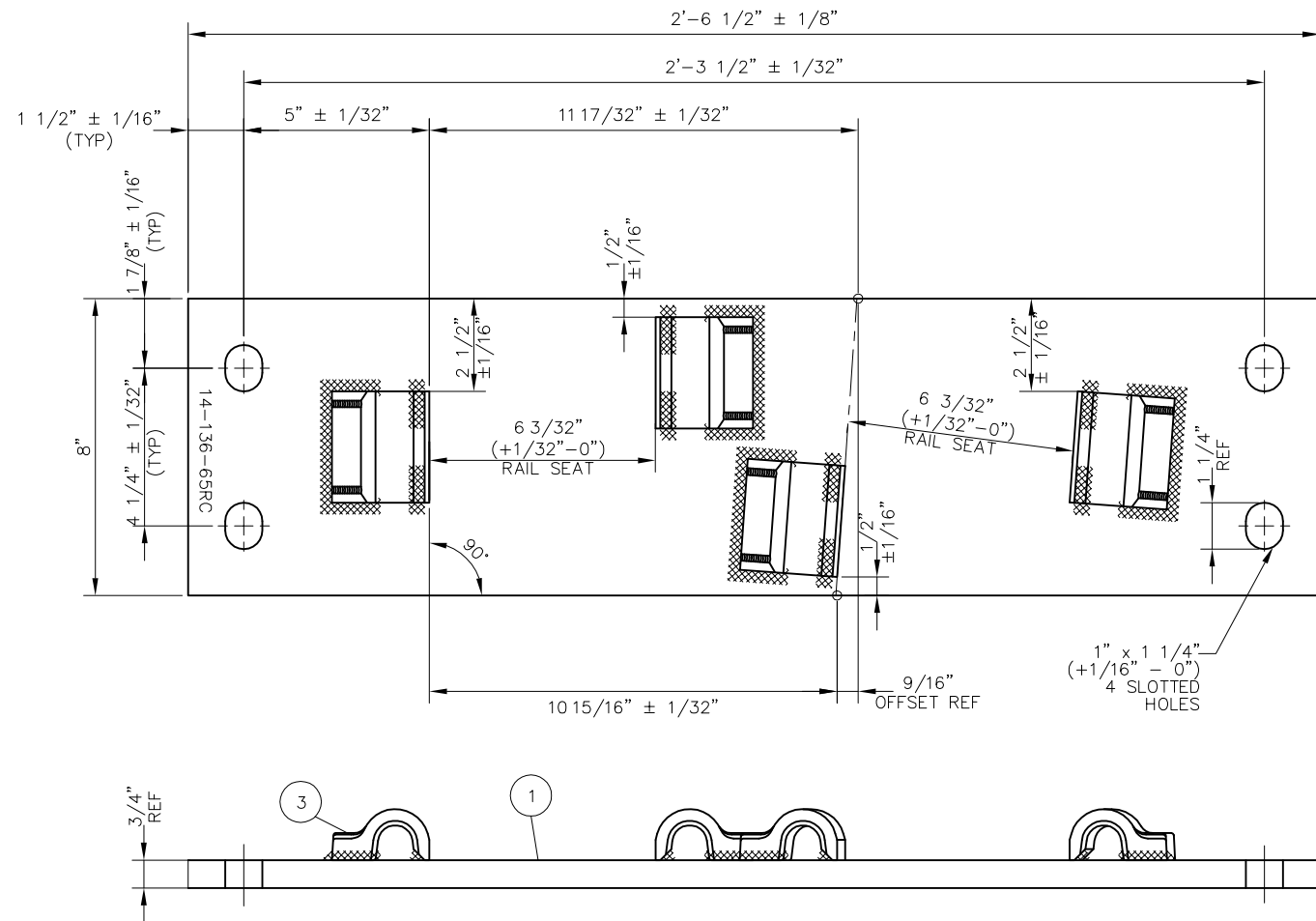
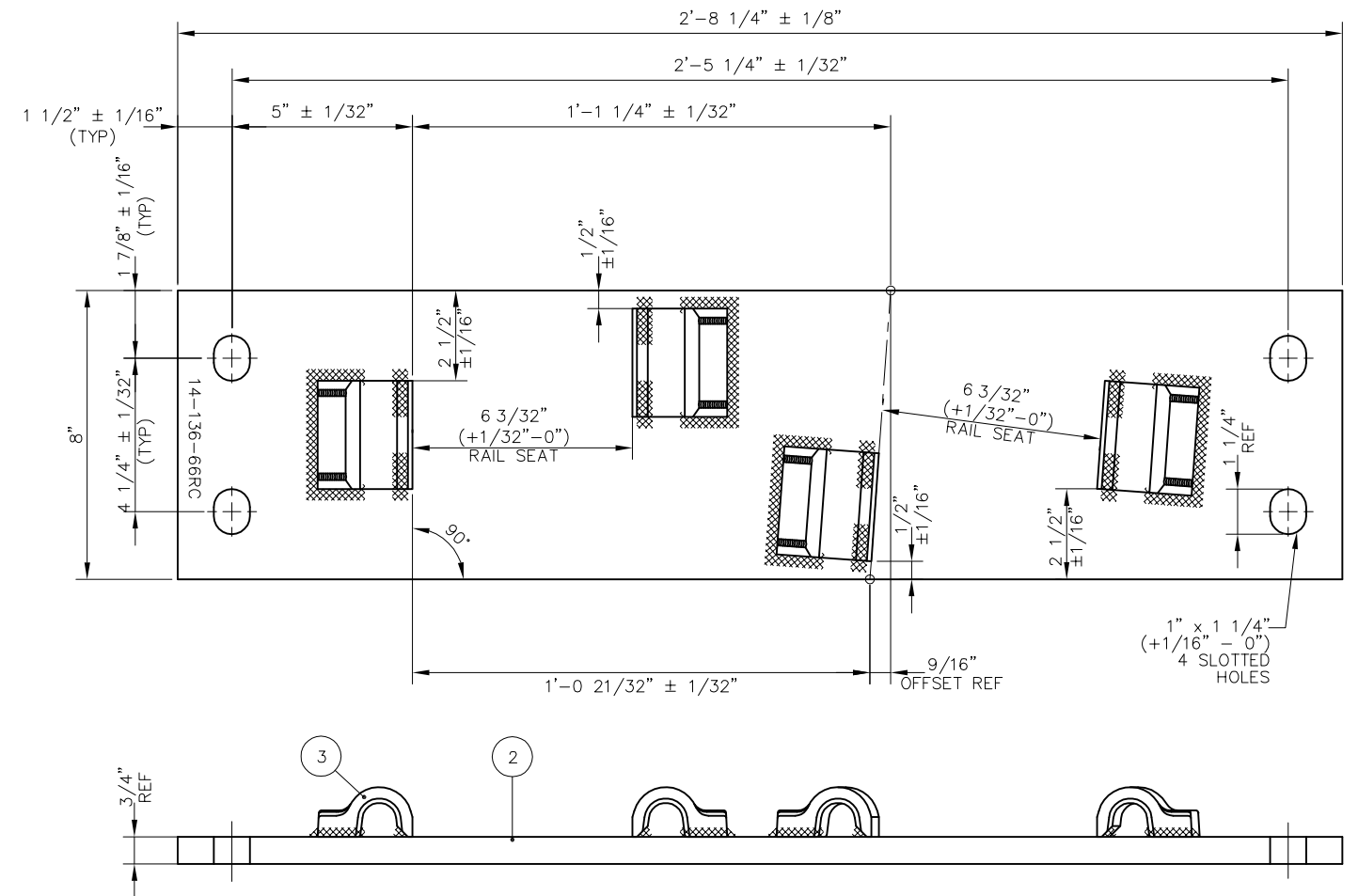


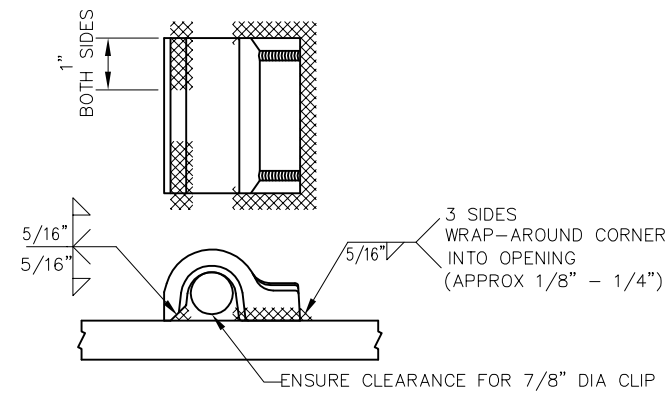
BILL OF MATERIAL				
ITEM	QTY FOR 14-136-65RC	QTY FOR 14-136-66RC	DESCRIPTION	DWG NO
1	1	0	FLAT BAR, ASTM A36, 3/4" x 8" x 2'-6 1/2" LONG	-
2	0	1	FLAT BAR, ASTM A36, 3/4" x 8" x 2'-8 1/4" LONG	-
3	4	4	SHOULDER, PANDROL, FORGED TONGUELESS, TYPE 1	-



FROG BASE PLATE 14-136-65RC



FROG BASE PLATE 14-136-66RC



FORGED SHOULDER WELDING DETAIL

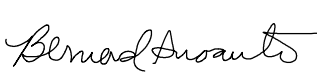

NOTES:

1. I.D. CHARACTERS TO BE 1/2" MINIMUM HEIGHT CLEARLY STAMPED AS SHOWN
2. WELDS TO BE DRESSED FLUSH WITH SHOULDER & NOT PROTRUDE INTO RAIL SEAT
3. SLOTTED HOLE CENTERS ARE INDICATED ON DRAWING

REV	DATE	BY	CHK	APP	DESCRIPTION

PENINSULA CORRIDOR JOINT POWERS BOARD

APPROVED BY:

ENGINEERING MANAGER DEPUTY DIRECTOR OF ENGINEERING

STANDARD DRAWINGS

SPECIAL TRACKWORK
 NO 14 TURNOUT
 WSM FROG RH
 FROG BASE PLATES 14-65RC AND 14-66RC

CADD FILE NO:	SD-2634
REV	DATE
0	093011
SPECIAL TRACKWORK	
STANDARD NO.:	SD-2634

