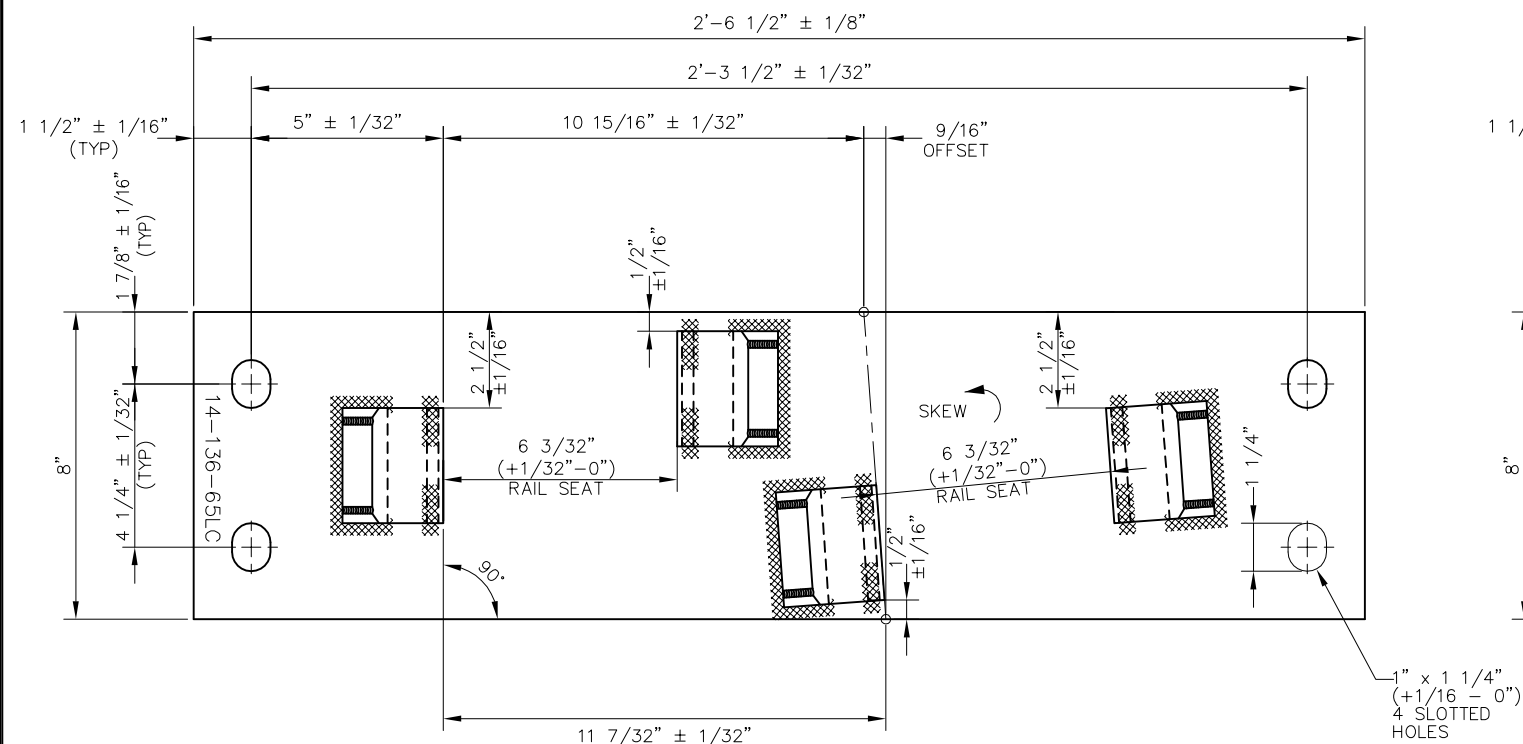
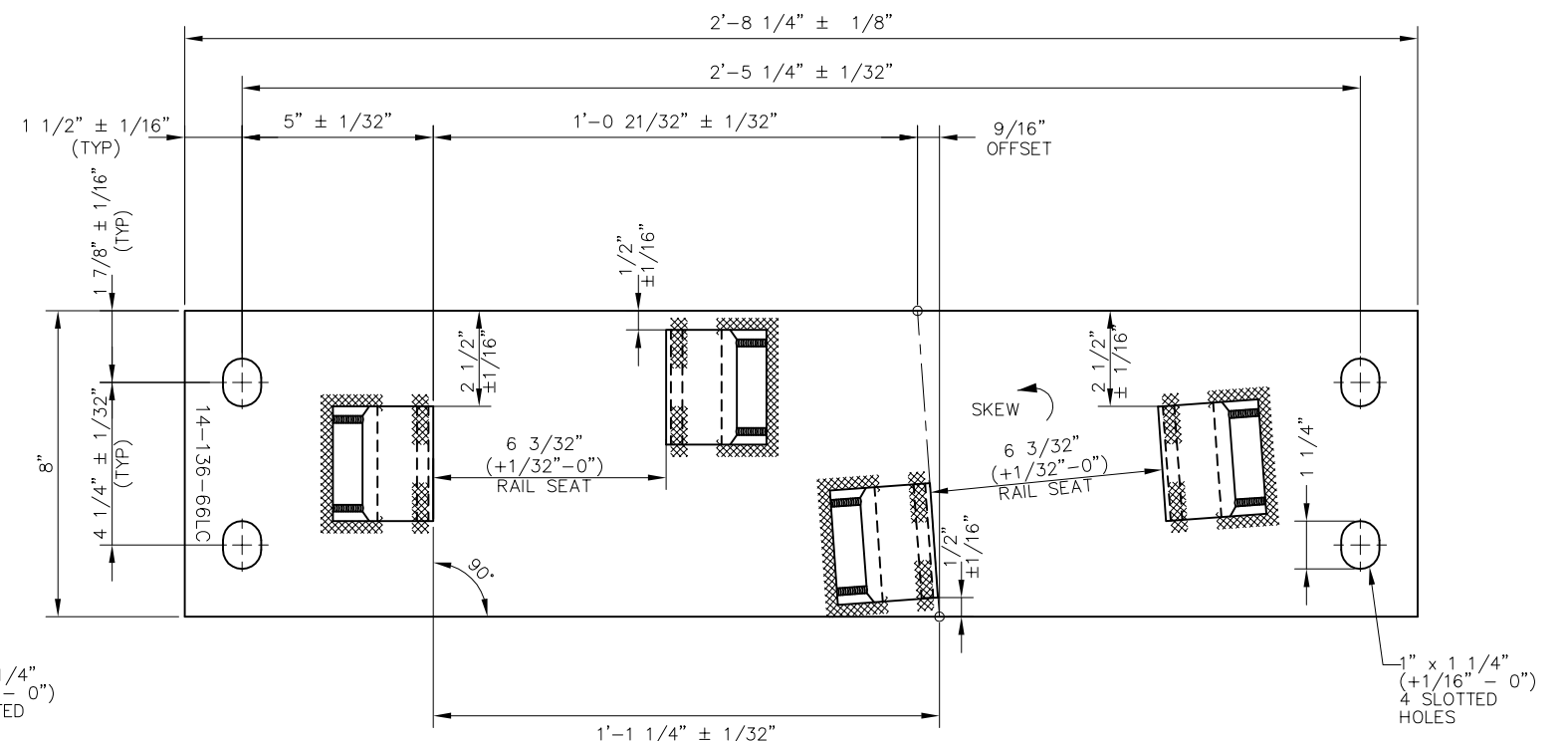


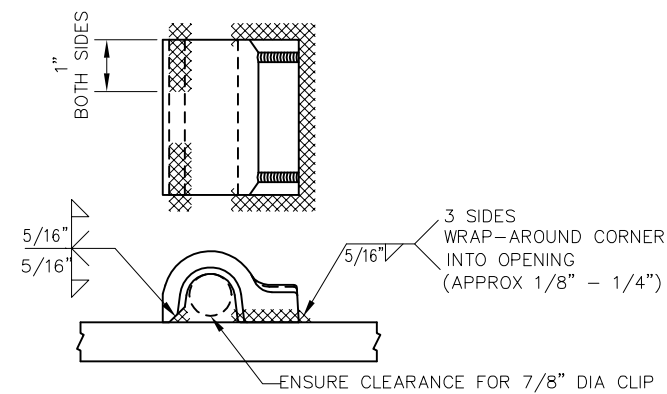
BILL OF MATERIAL				
ITEM	QTY FOR 14-136-65LC	QTY FOR 14-136-66LC	DESCRIPTION	DWG NO
1	1	0	FLAT BAR, ASTM A36, 3/4" x 8" x 2'-6 1/2" LONG	-
2	0	1	FLAT BAR, ASTM A36, 3/4" x 8" x 2'-8 1/4" LONG	-
3	4	4	SHOULDER, PANDROL, FORGED TONGUELESS, TYPE 1	-



FROG BASE PLATE 14-136-65LC



FROG BASE PLATE 14-136-66LC



FORGED SHOULDER WELDING DETAIL

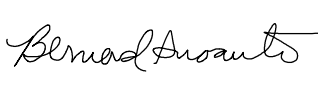

NOTES:

1. I.D. CHARACTERS SHALL BE 1/2" MINIMUM HEIGHT CLEARLY STAMPED AS SHOWN
2. WELDS SHALL BE DRESSED FLUSH WITH SHOULDER & NOT TO PROTRUDE INTO RAIL SEAT
3. SLOTTED HOLE CENTERS ARE INDICATED ON DRAWING

REV	DATE	BY	CHK	APP	DESCRIPTION

**PENINSULA CORRIDOR JOINT POWERS BOARD**

APPROVED BY:

ENGINEERING MANAGER      DEPUTY DIRECTOR OF ENGINEERING



1250 San Carlos Avenue  
San Carlos, CA 94070

**STANDARD DRAWINGS**

SPECIAL TRACKWORK  
 NO 14 TURNOUT  
 WSM FROG LH  
 FROG BASE PLATES 14-65LC AND 14-66LC

CADD FILE NO.: SD-2633	
REV 0	DATE 093011
SPECIAL TRACKWORK	
STANDARD NO.: SD-2633	