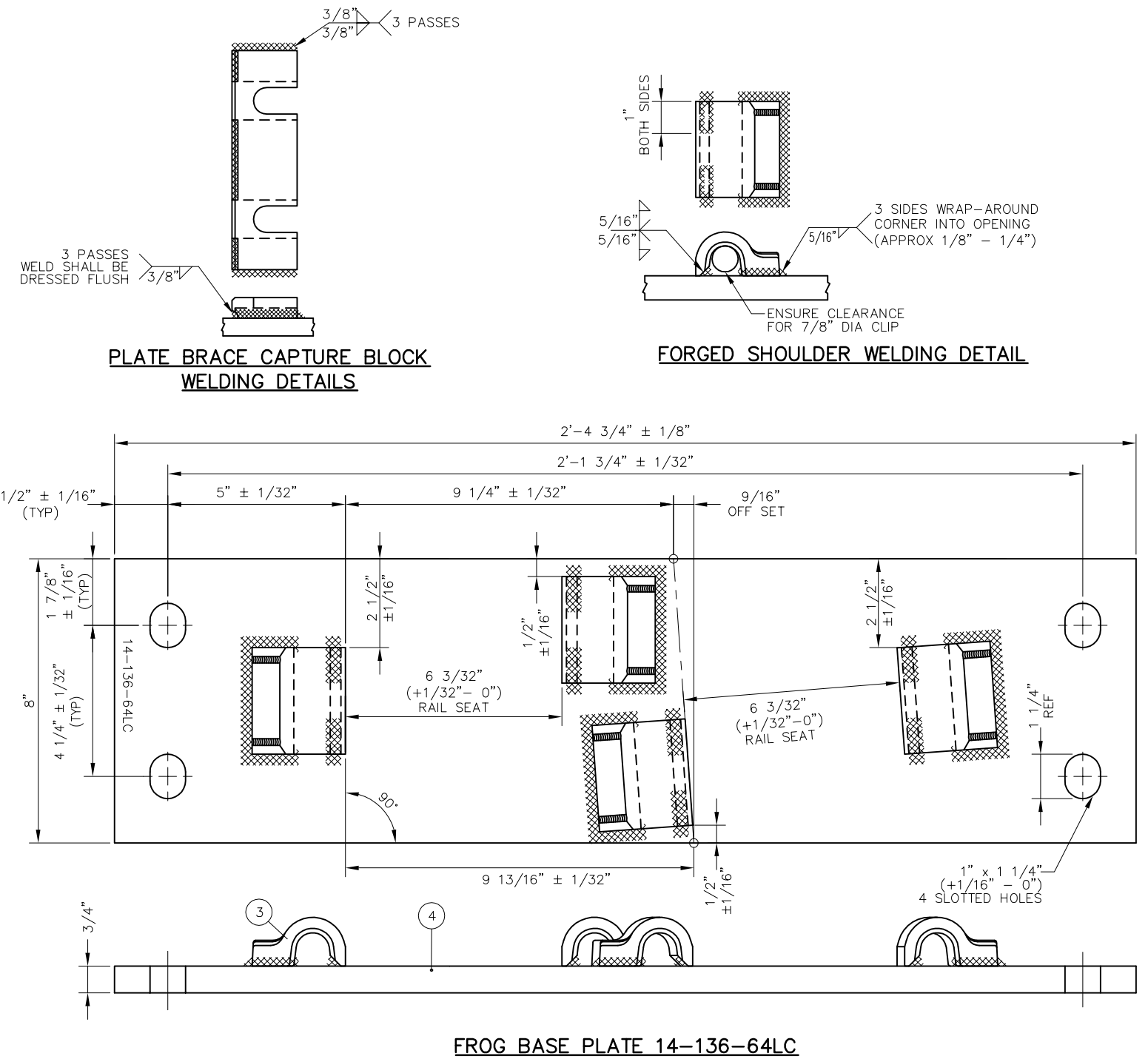
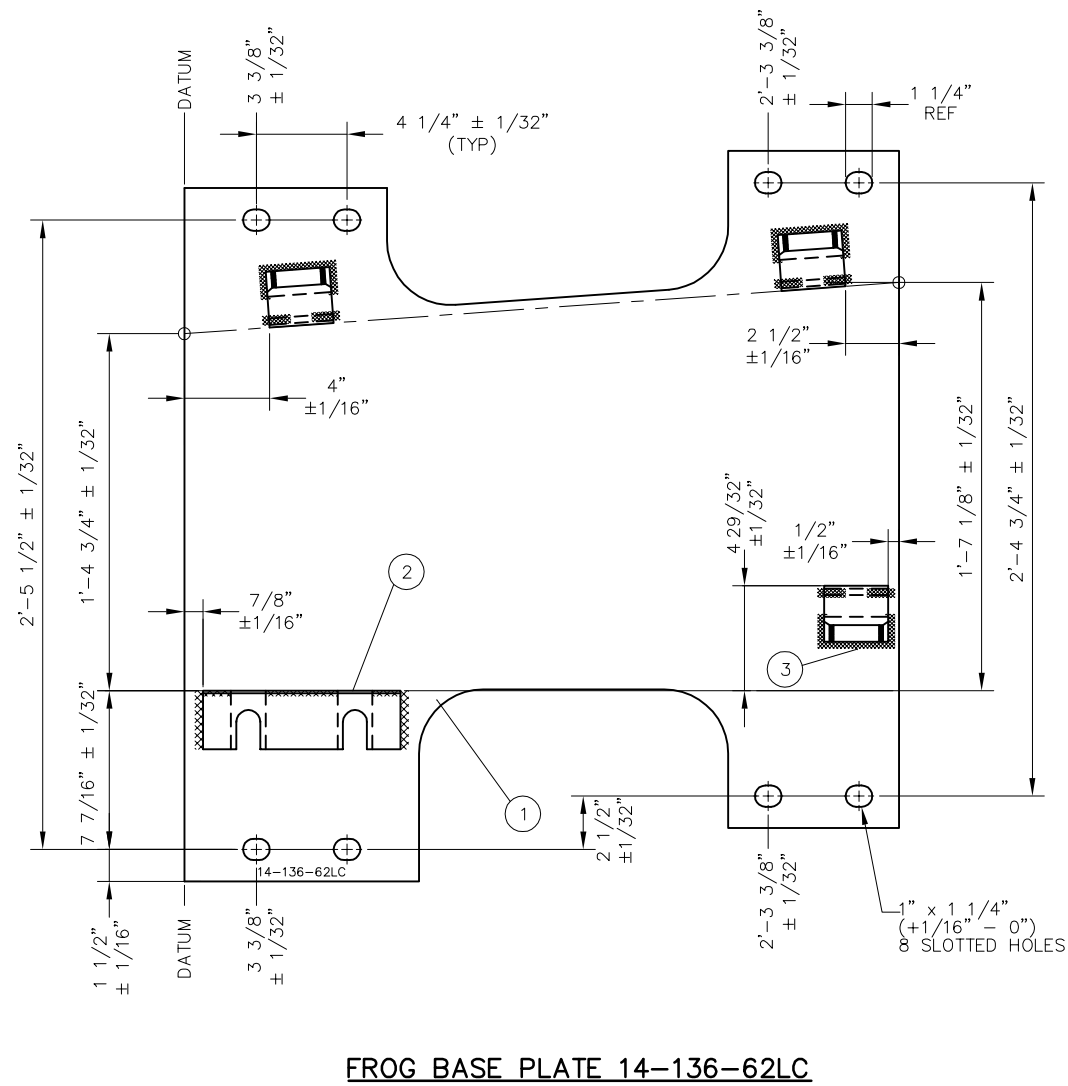


NOTES:

1. I.D. CHARACTERS SHALL BE 1/2" MINIMUM HEIGHT CLEARLY STAMPED AS SHOWN
2. WELDS SHALL BE DRESSED FLUSH WITH SHOULDERS AND STOPS AND NOT PROTRUDE INTO RAIL SEAT
3. OPENINGS IN BOLT CAPTURE BLOCKS SHALL BE FREE OF WELD AND SPATTER
4. SLOTTED HOLE CENTERS ARE INDICATED ON DRAWING

BILL OF MATERIAL				
ITEM	QTY FOR 14-136-62LC	QTY FOR 14-136-64LC	DESCRIPTION	DWG NO
1	1	0	BURNED PLATE, 3/4" THICK	-
2	1	0	CAPTURE BLOCK FOR HORN KEEPER	-
3	3	4	SHOULDER, PANDROL, FORGED TONGUELESS, TYPE 1	-
4	0	1	FLAT BAR, ASTM A36, 3/4" x 8" x 2'-4 3/4" LONG	-



REV	DATE	BY	CHK	APP	DESCRIPTION

PENINSULA CORRIDOR JOINT POWERS BOARD

APPROVED BY:

Bernard Anzures *Steph Chen*

ENGINEERING MANAGER DEPUTY DIRECTOR OF ENGINEERING

Caltrain

1250 San Carlos Avenue
San Carlos, CA 94070

STANDARD DRAWINGS

SPECIAL TRACKWORK
NO 14 TURNOUT
WSM FROG LH
FROG BASE PLATES 14-62LC AND 14-64LC

CADD FILE NO.: SD-2631	
REV	DATE
0	093011
SPECIAL TRACKWORK	
STANDARD NO.: SD-2631	