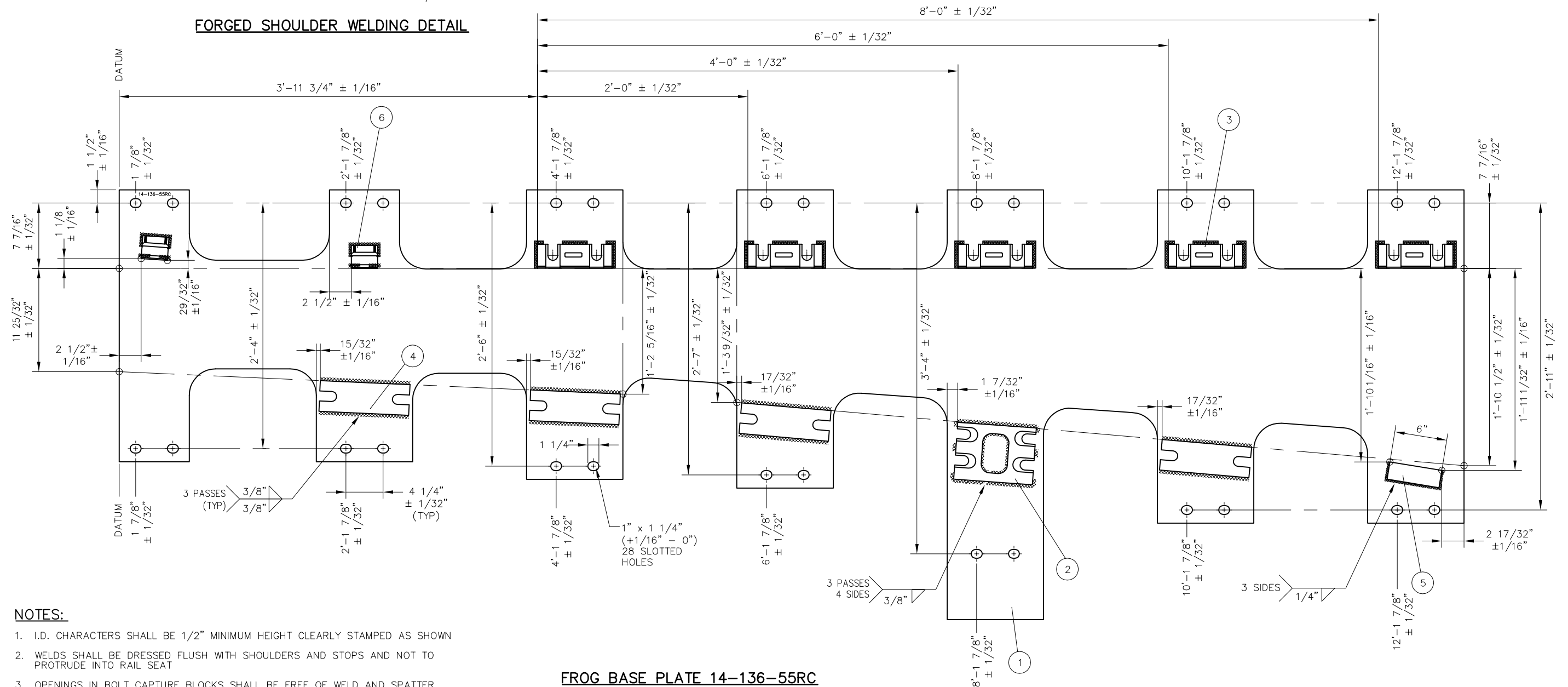


**FORGED SHOULDER WELDING DETAIL**

BILL OF MATERIAL			
ITEM	QTY	DESCRIPTION	DWG NO
1	1	BURNED PLATE, 3/4" THICK	-
2	1	CAPTURE BLOCK FOR SPRING BOX	-
3	5	CAPTURE BLOCK FOR PLATE CLIP	-
4	4	CAPTURE BLOCK FOR HORN KEEPER	-
5	1	FLAT BAR, ASTM A36, 1/2" THICK x 2" x 6" LONG	-
6	2	SHOULDER, PANDROL, FORGED TONGUELESS, TYPE 1	-



**FROG BASE PLATE 14-136-55RC**

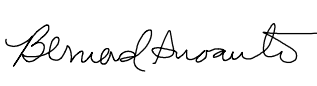

**NOTES:**

- I.D. CHARACTERS SHALL BE 1/2" MINIMUM HEIGHT CLEARLY STAMPED AS SHOWN
- WELDS SHALL BE DRESSED FLUSH WITH SHOULDERS AND STOPS AND NOT TO PROTRUDE INTO RAIL SEAT
- OPENINGS IN BOLT CAPTURE BLOCKS SHALL BE FREE OF WELD AND SPATTER
- SLOTTED HOLE CENTERS ARE INDICATED ON DRAWING


REV	DATE	BY	CHK	APP	DESCRIPTION

**PENINSULA CORRIDOR JOINT POWERS BOARD**

APPROVED BY:

ENGINEERING MANAGER      DEPUTY DIRECTOR OF ENGINEERING



1250 San Carlos Avenue  
 San Carlos, CA 94070

**STANDARD DRAWINGS**

SPECIAL TRACKWORK  
 NO 14 TURNOUT  
 WSM FROG RH  
 FROG BASE PLATE 14-55RC

CADD FILE NO.: SD-2630	
REV	DATE
0	093011
SPECIAL TRACKWORK	
STANDARD NO.: SD-2630	