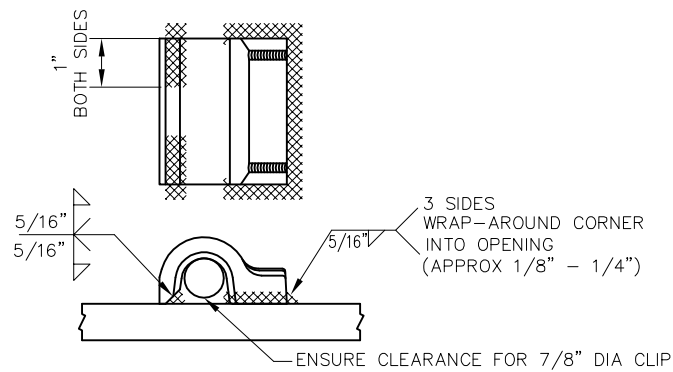


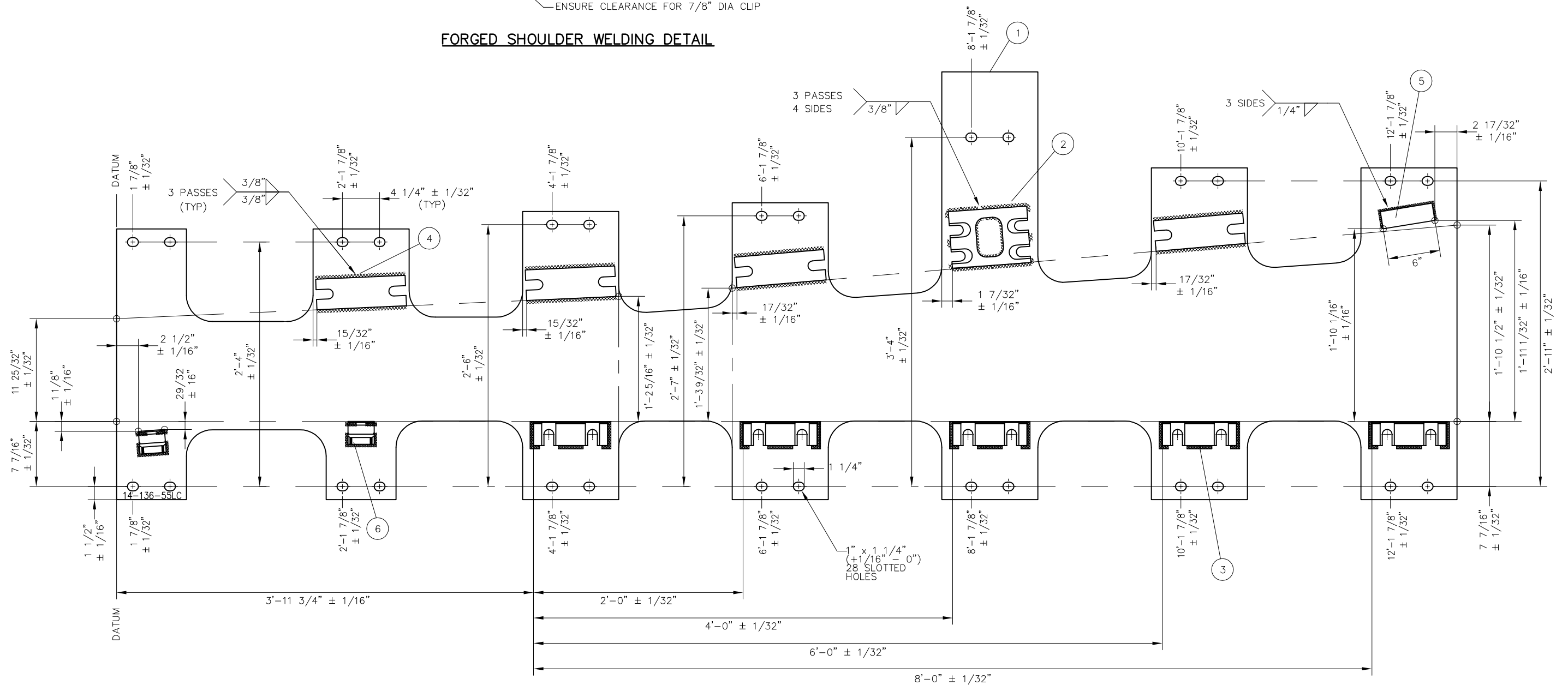
NOTES:

1. I.D. CHARACTERS SHALL BE 1/2" MINIMUM HEIGHT CLEARLY STAMPED AS SHOWN
2. WELDS SHALL BE DRESSED FLUSH WITH SHOULDERS AND STOPS AND NOT TO PROTRUDE INTO RAIL SEAT
3. OPENINGS IN BOLT CAPTURE BLOCKS SHALL BE FREE OF WELD AND SPATTER
4. SLOTTED HOLE CENTERS ARE INDICATED ON DRAWING



FORGED SHOULDER WELDING DETAIL

BILL OF MATERIAL				DWG NO
ITEM	QTY	DESCRIPTION		
1	1	BURNED PLATE, 3/4" THICK		-
2	1	CAPTURE BLOCK FOR SPRING BOX		-
3	5	CAPTURE BLOCK FOR PLATE CLIP		-
4	4	CAPTURE BLOCK FOR HORN KEEPER		-
5	1	FLAT BAR, ASTM A36, 1/2" THICK x 2" x 6" LONG		-
6	2	SHOULDER, PANDROL, FORGED TONGUELESS, TYPE 1		-





FROG BASE PLATE 14-136-55LC


REV	DATE	BY	CHK	APP	DESCRIPTION

PENINSULA CORRIDOR JOINT POWERS BOARD

APPROVED BY:

ENGINEERING MANAGER DEPUTY DIRECTOR OF ENGINEERING



1250 San Carlos Avenue
 San Carlos, CA 94070

STANDARD DRAWINGS

SPECIAL TRACKWORK
 NO 14 TURNOUT
 WSM FROG LH
 FROG BASE PLATE 14-55LC

CADD FILE NO:	SD-2629
REV	DATE
0	093011
SPECIAL TRACKWORK	
STANDARD NO.:	SD-2629