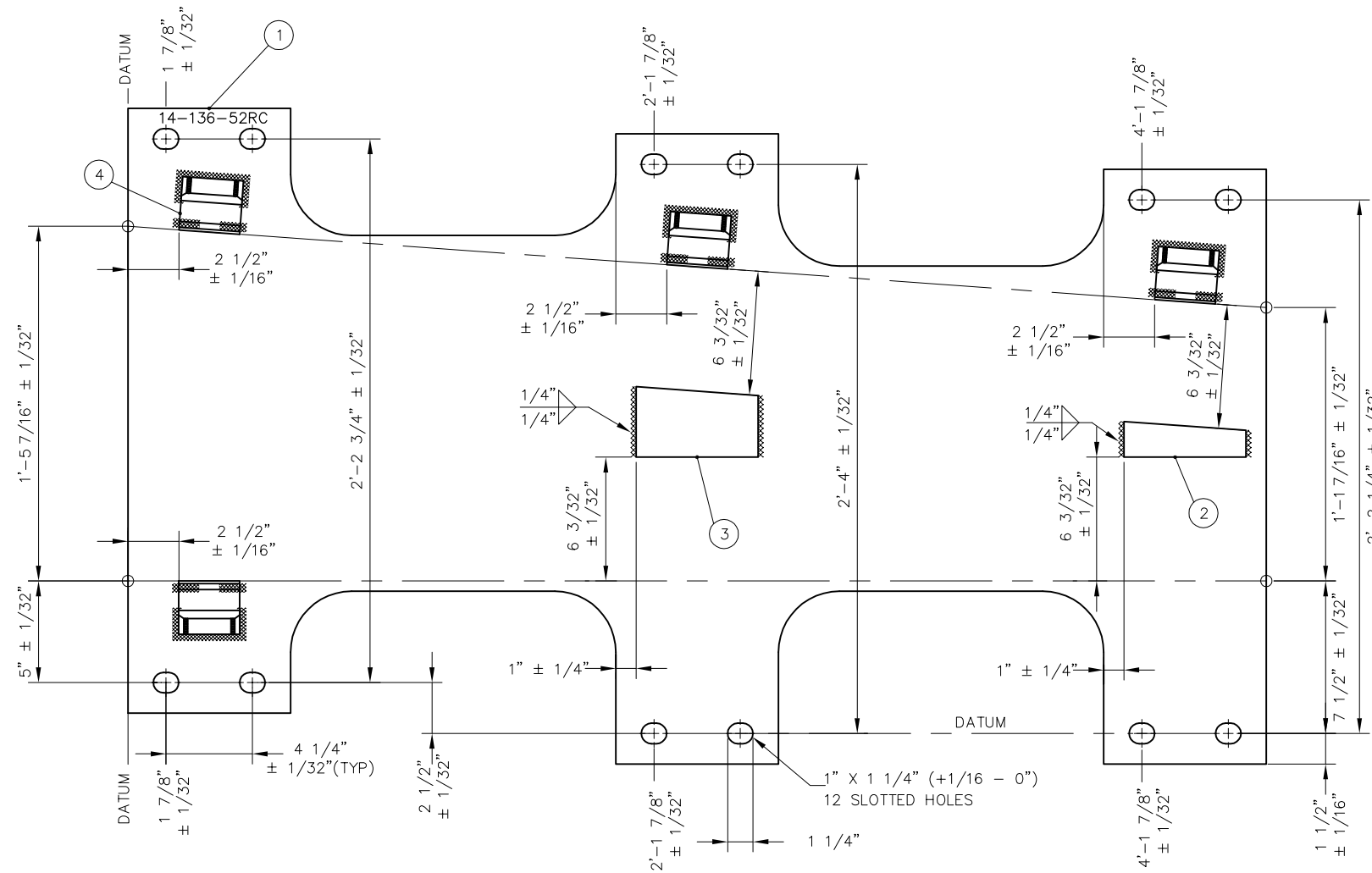
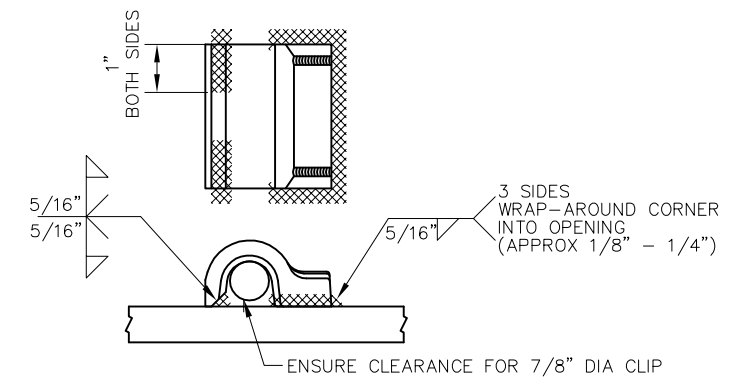


BILL OF MATERIAL			
ITEM	QTY	DESCRIPTION	DWG NO
1	1	BURNED PLATE, 3/4" THICK	-
2	1	BURNED STOP, 1/2" THICK, TAPERED 1 5/16" TO 1 3/4", 6" LONG	-
3	1	BURNED STOP, 1/2" THICK, TAPERED 3 1/32" TO 3 15/32", 6" LONG	-
4	4	SHOULDER, PANDROL, FORGED TONGUELESS, TYPE 1	-



FROG BASE PLATE 14-136-52RC



FORGED SHOULDER WELDING DETAIL

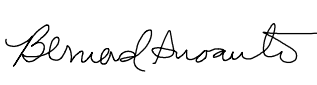

NOTES:

1. I.D. CHARACTERS SHALL BE 1/2" MINIMUM HEIGHT CLEARLY STAMPED AS SHOWN
2. WELDS SHALL BE DRESSED FLUSH WITH SHOULDERS AND STOPS AND NOT TO PROTRUDE INTO RAIL SEAT
3. SLOTTED HOLE CENTERS ARE INDICATED ON DRAWING


REV	DATE	BY	CHK	APP	DESCRIPTION

PENINSULA CORRIDOR JOINT POWERS BOARD

APPROVED BY:

ENGINEERING MANAGER DEPUTY DIRECTOR OF ENGINEERING



1250 San Carlos Avenue
 San Carlos, CA 94070

STANDARD DRAWINGS		CADD FILE NO.:
SPECIAL TRACKWORK NO 14 TURNOUT WSM FROG RH FROG BASE PLATE 14-52RC		SD-2628
REV	DATE	
0	093011	
STANDARD NO.:		
SD-2628		