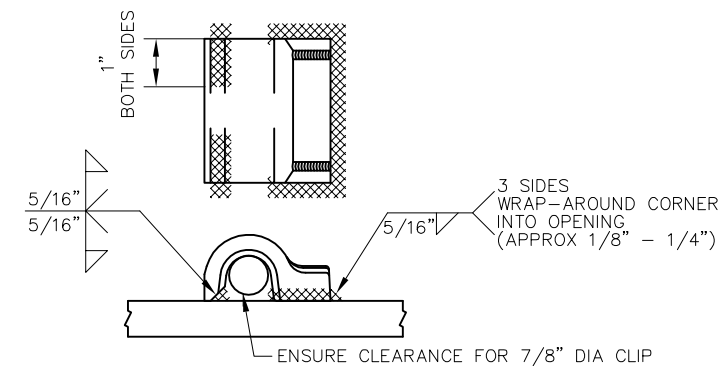
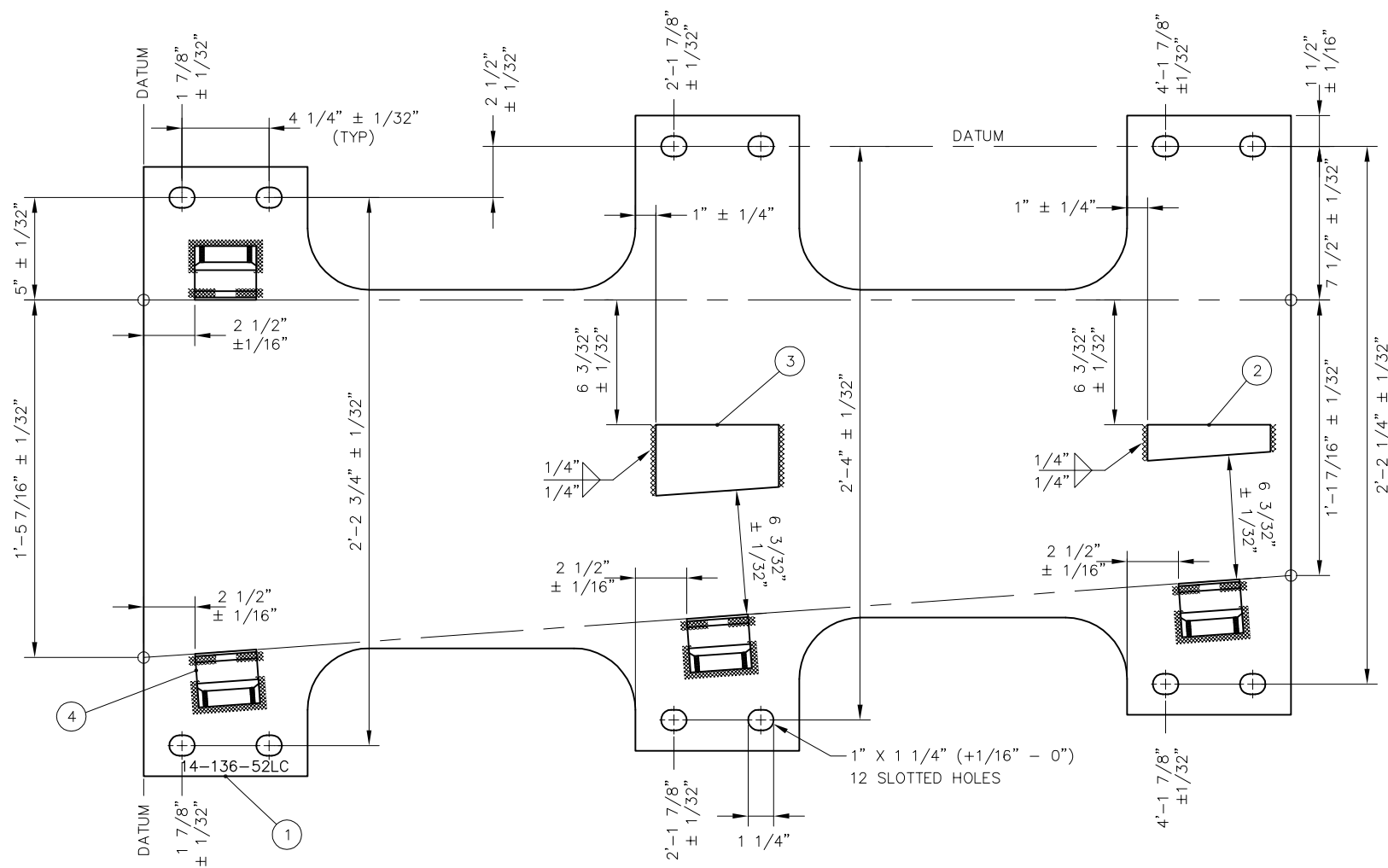


BILL OF MATERIAL			
ITEM	QTY	DESCRIPTION	DWG NO
1	1	BURNED PLATE, 3/4" THICK	-
2	1	BURNED STOP, 1/2" THICK, TAPERED 1 5/16" TO 1 3/4", 6" LONG	-
3	1	BURNED STOP, 1/2" THICK, TAPERED 3 1/32", TO 3 15/32", 6" LONG	-
4	4	SHOULDER, PANDROL, FORGED TONGUELESS, TYPE 1	-



FORGED SHOULDER WELDING DETAIL

NOTES:

1. I.D. CHARACTERS SHALL BE 1/2" MINIMUM HEIGHT CLEARLY STAMPED AS SHOWN
2. WELDS SHALL BE DRESSED FLUSH WITH SHOULDERS AND STOPS AND NOT TO PROTRUDE INTO RAIL SEAT
3. SLOTTED HOLE CENTERS ARE INDICATED ON DRAWING

FROG BASE PLATE 14-136-52LC

PENINSULA CORRIDOR JOINT POWERS BOARD

STANDARD DRAWINGS

REV	DATE	BY	CHK	APP	DESCRIPTION

APPROVED BY:

Bernard Anagnostis *Steph Chen*

ENGINEERING MANAGER DEPUTY DIRECTOR OF ENGINEERING

1250 San Carlos Avenue
San Carlos, CA 94070

SPECIAL TRACKWORK
NO 14 TURNOUT
WSM FROG LH
FROG BASE PLATE 14-52LC

CADD FILE NO.: SD-2627	
REV 0	DATE 093011
SPECIAL TRACKWORK	
STANDARD NO.: SD-2627	