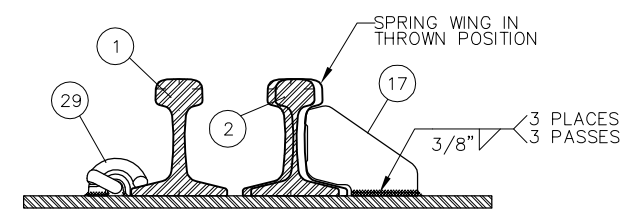
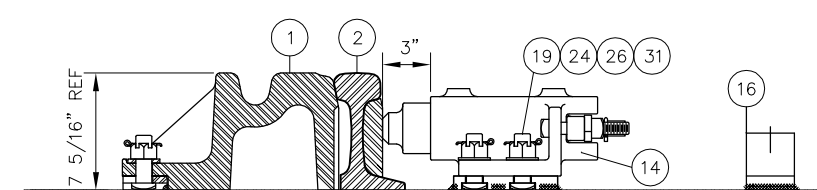


BILL OF MATERIAL				BILL OF MATERIAL			
ITEM	QTY	DESCRIPTION	DWG NO	ITEM	QTY	DESCRIPTION	DWG NO
1	1	NO 14-136 LB RE SPRING FROG, RH POINT ASSEMBLY	-	16	1	RETARDER PLATE BRACKET FOR FROG C/W HYDRAULIC RETARDER	-
2	1	SPRING WING RAIL, NO 14-136 LB RE, RH, C/W HARDWARE	-	17	3	FLAT RAIL BRACE FOR NON D-BAR APPLICATIONS	-
3	1	TOE BLOCK, NO 14-136 LB RE WSM	-	18	6	WASHER, BOLT CAPTURE STYLE, 1/4" THICK	-
4	1	FROG PLATE (14-136-50RC)	SD-2626	19	16	BOLT, 1" DIA x 3", THIN SQ HEAD, DRILLED @ 2 1/2", GR 5	-
5	1	FROG PLATE (14-136-51RC)	SD-2626	20	8	BOLT, 1" DIA x 3 1/2", THIN SQ HEAD, DRILLED @ 2 11/16", GR 5	-
6	1	FROG PLATE (14-136-52RC)	SD-2628	21	2	BOLT, 1" DIA x 4 1/8" HEAVY HEX HEAD, GR 8	-
7	1	FROG PLATE (14-136-55RC)	SD-2630	22	6	BOLT, 1 3/8" DIA x 5 1/2", SQUARE HEAD, GR 8	-
8	1	FROG PLATE (14-136-62RC)	SD-2632	23	2	SECURITY LOCK NUT, 1" DIA, HEX (SH521), GR 5	-
9	1	FROG PLATE (14-136-64RC)	SD-2632	24	24	NUT, 1" DIA HEAVY HEX, SLOTTED, GR 5	-
10	1	FROG PLATE (14-136-65RC)	SD-2634	25	6	SECURITY LOCK NUT, 1 3/8" DIA HEX (SH530), GR 8	-
11	1	FROG PLATE (14-136-66RC)	SD-2634	26	16	FLAT WASHER, FOR 1" DIA x 5/32" THICK, HARDENED	-
12	4	HORN KEEPER, REVERSIBLE	-	27	6	FLAT WASHER, FOR 1 3/8" DIA x 1/4" THICK, HARDENED	-
13	4	WEAR PLATE FOR REVERSIBLE HORN KEEPER	-	28	6	TAIL WASHER, FLAT (837K)	-
14	1	SPRING BOX ASSEMBLY, WITH 3" MAXIMUM PLUNGER TRAVEL	-	29	27	PANDROL SPRING CLIP E2055	-
15	1	RETARDER, ENDINE P/N: SP22917, CLEVIS ENDS WITH HARDWARE	-	30	2	PANDROL SPRING CLIP E2056	-
				31	24	COTTER PIN, 1/4" DIA x 2" LONG	-



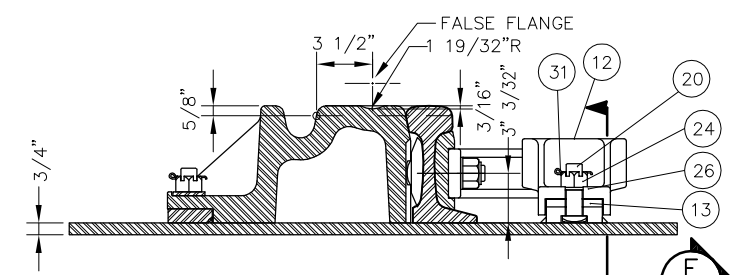
FLAT RAIL BRACE MOUNTING DETAILS, TYPICAL 3 PLACES

A SECTION
SCALE: NTS



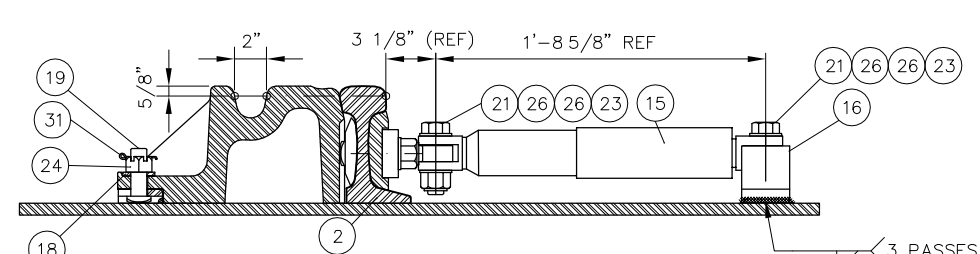
SPRING BOX DETAIL RETARDER REMOVED FOR CLARITY

B SECTION
SCALE: NTS



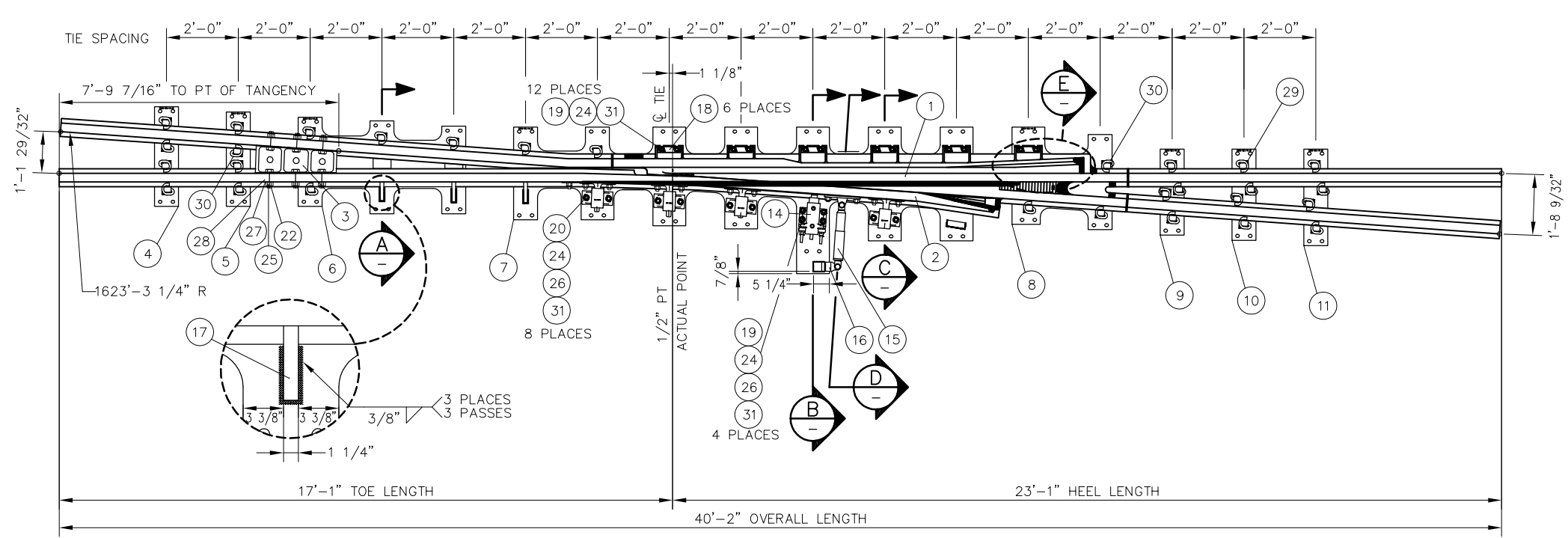
HORN AND KEEPER MOUNTING DETAILS

C SECTION
SCALE: NTS

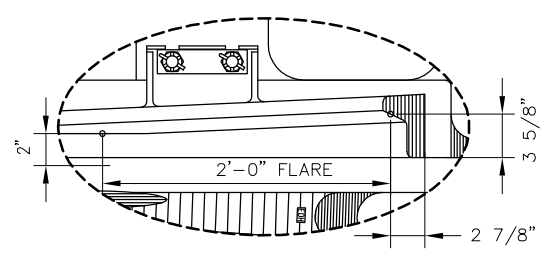


RETARDER MOUNTING DETAIL SPRING BOX REMOVED FOR CLARITY

D SECTION
SCALE: NTS

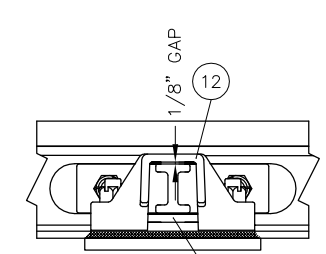


- NOTES:**
- RETARDER CLOSING TIME RANGES FROM 1 TO 3 MINUTES
 - SPRING BOX LOAD IS 300 LBS/IN
 - SPRING WING SHALL BE THROWN TO A 1 7/8" FLANGEWAY AT THE 3/4" POINT TO DETERMINE THE SPRING WING THROWN POSITION
 - FLAT RAIL BRACES (ITEM NO 17) SHALL BE WELDED WHERE SHOWN, UP AGAINST SPRING WING WHEN FULLY THROWN
 - RAIL END DRILLING SHALL BE @ 9" AND 15 1/2", 3 3/32" ABOVE RAIL BASE, 1 5/16" DIA AT ALL 4 RAIL ENDS. ALL RAIL HOLE EDGES SHALL BE ROUNDED WITH A 1/8" R
 - RETARDER BRACKET (ITEM NO 16) SHALL BE WELDED AS SHOWN
 - FROG SHALL BE CONSTRUCTED TO TOLERANCES GIVEN ON LATEST AREMA PLAN 1010, PERMISSIBLE VARIATIONS IN COMPLETED FROGS
 - INSERT SHALL BE EXPLOSIVE DEPTH HARDENED TO 352 BRINELL PER AREMA
 - NAME TAG SHALL BE AFFIXED TO RIGID WING RAIL NEAR 1/2" PT WITH INFORMATION SHOWN
 - CALTRAIN WILL CONSIDER A TAPERED HEEL SPRING OF SAME ALIGNMENT AND DIMENSIONS TO REPLACE WSM



DIMENSIONS AT GAUGE ELEVATION

1 DETAIL
SCALE: NTS



E SECTION
SCALE: NTS

PENINSULA CORRIDOR JOINT POWERS BOARD

APPROVED BY:
Bernard Anagnostis ENGINEERING MANAGER
Steph Chen DEPUTY DIRECTOR OF ENGINEERING



STANDARD DRAWINGS

SPECIAL TRACKWORK
 NO 14 TURNOUT
 WSM FROG RH AND FROG PACK

CADD FILE NO: SD-2624	
REV 0	DATE 093011
STANDARD NO.: SD-2624	

REV	DATE	BY	CHK	APP	DESCRIPTION