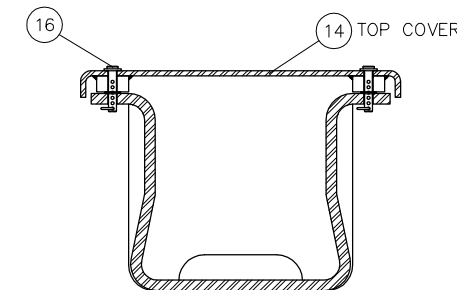


NOTE:
 1. COORDINATE SWITCH MACHINE AND MACHINE PLATES (NIC) WITH CALTRAIN

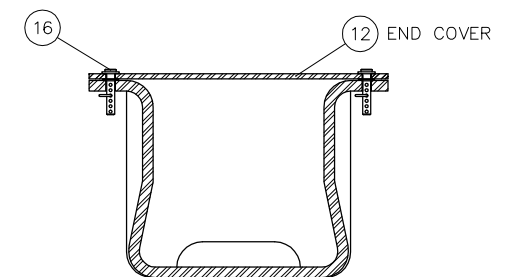
BILL OF MATERIAL			
ITEM	QTY	DESCRIPTION	DWG NO
1	1	RODDING ASSEMBLY FOR NO 14-136 LB RE, SWITCH MACHINE ON LEFT SIDE	SD-2637
2	1	HOLLOW TIE ASSEMBLY (HT-1RL-14-136)	-
3	1	HOLLOW TIE ASSEMBLY (HT-2RL-14-136)	-
4	1	HOLLOW TIE ASSEMBLY (HT-5RL-14-136)	-
5	1	HOLLOW TIE ASSEMBLY (HT-9RL-14-136)	-
6*	2	COVER PLATE NO 1, HOLLOW SWITCH TIE	-
7	8	LV BRACE FOR 136 LB RE	-
8	8	SERRATED WASHER FOR LV BRACE	-
9	8	CLIP, PANDROL, FC1601	-
10	8	CLIP, PANDROL, E2055	-
11	16	RAIL ANCHOR UNIT DRIVE-ON TYPE 5	-
12	2	STEEL COVER PLATE FOR HST TIE, TOP END	-
13*	1	COVER PLATE NO 2, HOLLOW SWITCH TIE	-
14*	1	COVER PLATE NO 3, HOLLOW SWITCH TIE	-
15	1	END COVER PLATE FOR HST TIE, SHORT TOP VERSION	-
16	30	PUSH PIN ASSEMBLY FOR HST COVERS	-
17	4	STEEL SIDE END COVER PLATE ASSEMBLY FOR HST TIE	-
18	8	COVER SUPPORT BRACKET	-
19	4	HST SWITCH PLATE HTP-206-STR	SD-2305
20	1	HST SWITCH PLATE HTP-209-R	SD-2307
21	2	HST SWITCH PLATE HTP-201-R	SD-2308
22	1	HST SWITCH PLATE HTP-203-R	SD-2309
23	1	PILLOW BLOCK MOUNTING PLATE	-
24	8	SIDE POST INSULATOR FOR FC1600 SERIES PANDROL FASTCLIP	SD-2313
25	8	TOE INSULATOR FOR FC1600 SERIES PANDROL FASTCLIP	SD-2314

* NOT SHOWN ON ASSEMBLY FOR CLARITY



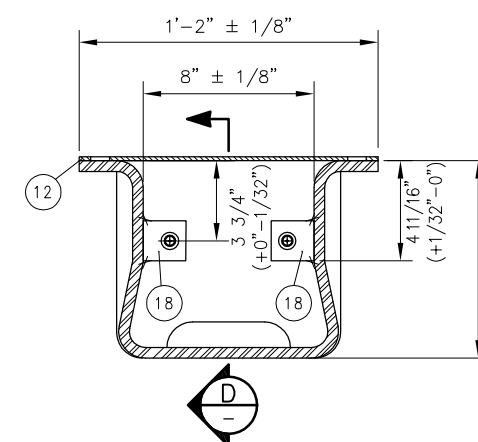
HOLLOW TIE TOP COVER DETAIL

A SECTION
SCALE: NTS



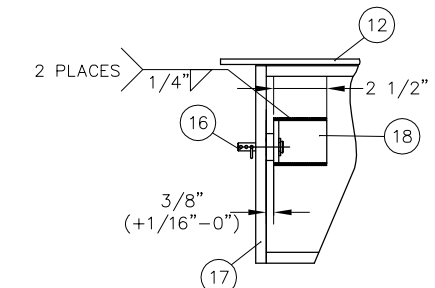
END COVER PLATE

B SECTION
SCALE: NTS



HOLLOW TIE SIDE END COVER DETAIL

C SECTION
SCALE: NTS



WELDING DETAIL

D SECTION
SCALE: NTS

PENINSULA CORRIDOR JOINT POWERS BOARD

STANDARD DRAWINGS

CADD FILE NO.: SD-2619

APPROVED BY:

Bernard Anagnostis *Steph Chen*
 ENGINEERING MANAGER DEPUTY DIRECTOR OF ENGINEERING



1250 San Carlos Avenue
 San Carlos, CA 94070

SPECIAL TRACKWORK
 NO 14 TURNOUT
 HOLLOW STEEL TIES FOR RH TURNOUT
 SWITCH MACHINE ON MAINLINE SIDE

REV 0 DATE 093011

SPECIAL TRACKWORK

STANDARD NO.: SD-2619

REV	DATE	BY	CHK	APP	DESCRIPTION