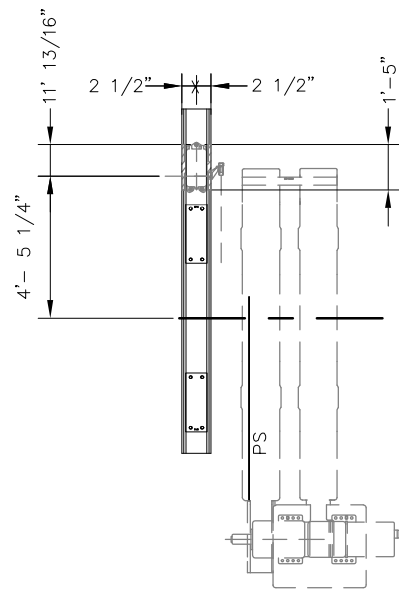
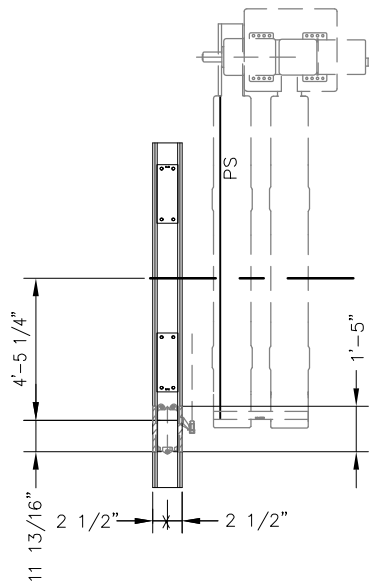


BILL OF MATERIALS

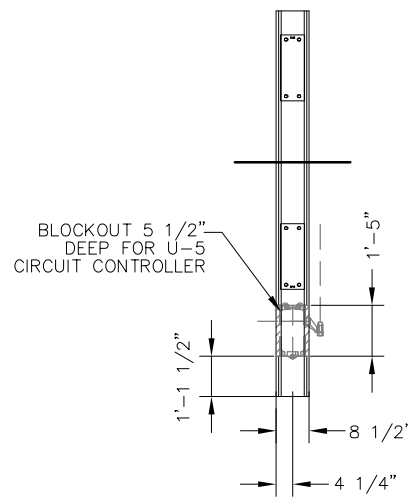
ITEM	QTY	DESCRIPTION	DWG NO
1	4	TIES 1,2,5 AND 9, POWER SWITCH MACHINE ON MAINLINE SIDE FOR LH TURNOUT (HOLLOW STEEL)	SD-2620
2	4	TIES 1,2,5 AND 9, POWER SWITCH MACHINE ON TURNOUT SIDE FOR LH TURNOUT (HOLLOW STEEL)	SD-2622



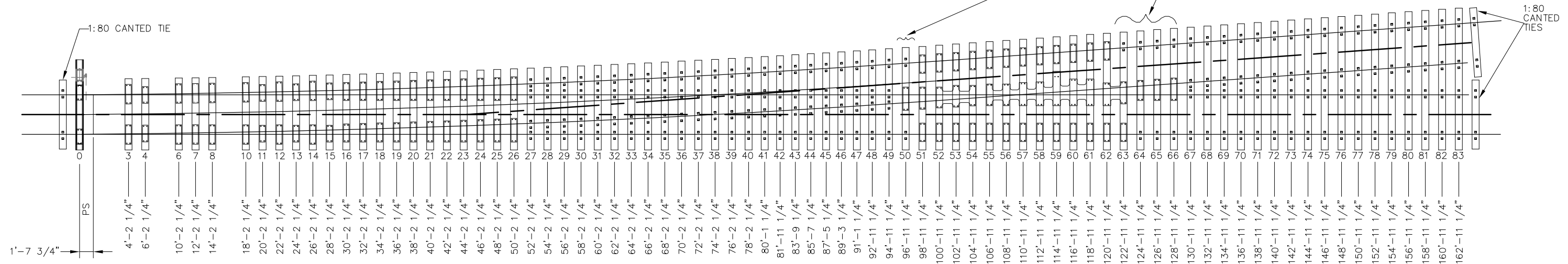
TIE "O" PLACEMENT  
SWITCH MACHINE  
ON MAINLINE (RH) SIDE



TIE "O" PLACEMENT  
SWITCH MACHINE  
ON TURNOUT (LH) SIDE



TIE "O" BLOCKOUT DETAIL



NOTES:

- SET SHALL INCLUDE TIES 0, 3 & 4, 6 THROUGH 8 AND 10 THROUGH 83, THREE 1:80 CANTED TIES, TIE PADS FOR ALL PLATES AND PIM INSERTS
- TIE LENGTHS ARE DETERMINED BY ADDING 1'-10 7/16" FROM RAIL GAUGE LINE (OR 1'-9" FROM RAIL CENTERLINE) PER SIDE AT THE CENTERLINE OF EACH TIE LOCATION
- ALL TIES ARE FLAT (NON-CANTED) EXCEPT 1:80 CANTED TRANSITION TIES
- TRANSITION TIES (QUANTITY 3) SHALL INCORPORATE 1:80 CANTED RAIL SEATS AND USE 4'-8 1/2" BETWEEN STRAIGHT RAIL SEAT GAUGES. LENGTH SHALL BE 8'-3"
- THIS DRAWING SHOWS TIE "O" PLACEMENT FOR SWITCH MACHINE ON RH/MAINLINE SIDE. USE OPPOSITE HAND FOR SWITCH MACHINE ON LH/TURNOUT SIDE
- SEE BILL OF MATERIALS ABOVE FOR TIES 1, 2, 5 AND 9

PENINSULA CORRIDOR JOINT POWERS BOARD

APPROVED BY:

*Bernard Anzures* *Steph Chen*  
ENGINEERING MANAGER DEPUTY DIRECTOR OF ENGINEERING



1250 San Carlos Avenue  
San Carlos, CA 94070

STANDARD DRAWINGS

SPECIAL TRACKWORK  
NO 14 TURNOUT  
HOLLOW STEEL TIE AND CONCRETE TIE  
LAYOUT FOR LH TURNOUT

CADD FILE NO.:		SD-2618
REV	DATE	
0	093011	
SPECIAL TRACKWORK		
STANDARD NO.:		SD-2618

REV	DATE	BY	CHK	APP	DESCRIPTION