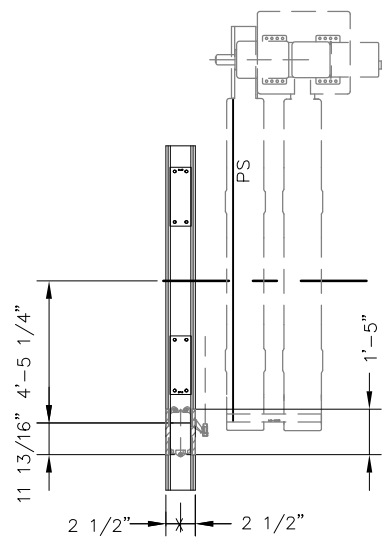
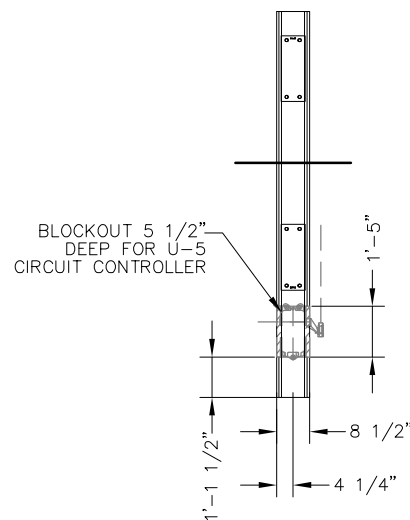


TIE "O" PLACEMENT  
SWITCH MACHINE  
ON TURNOUT (RH) SIDE

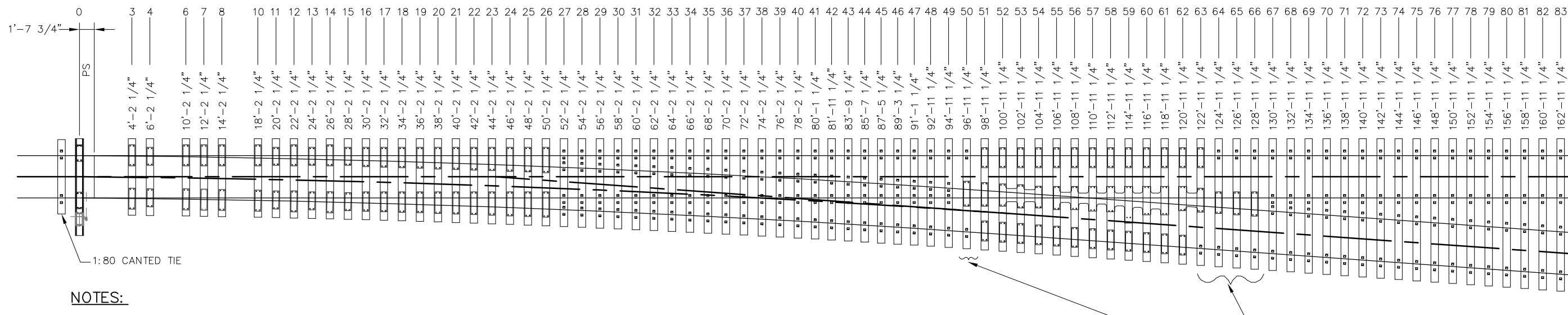


TIE "O" PLACEMENT  
SWITCH MACHINE  
ON MAINLINE (LH) SIDE



TIE "O" BLOCKOUT DETAIL

BILL OF MATERIALS			
ITEM	QTY	DESCRIPTION	DWG NO
1	4	TIES 1,2,5 AND 9, POWER SWITCH MACHINE ON MAINLINE SIDE FOR LH TURNOUT (HOLLOW STEEL)	SD-2619
2	4	TIES 1,2,5 AND 9, POWER SWITCH MACHINE ON TURNOUT SIDE FOR LH TURNOUT (HOLLOW STEEL)	SD-2621



**NOTES:**

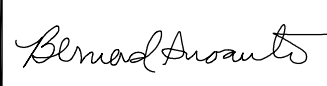

- SET SHALL INCLUDE TIES 0, 3 & 4, 6 THROUGH 8 AND 10 THROUGH 83, THREE 1:80 CANTED TIES, TIE PADS FOR ALL PLATES AND PIM INSERTS
- TIE LENGTHS ARE DETERMINED BY ADDING 1'-10 7/16" FROM RAIL GAUGE LINE (OR 1'-9" FROM RAIL CENTERLINE) PER SIDE AT THE CENTERLINE OF EACH TIE LOCATION
- ALL TIES ARE FLAT (NON-CANTED) EXCEPT 1:80 CANTED TRANSITION TIES
- TRANSITION TIES (QUANTITY 3) SHALL INCORPORATE 1:80 CANTED RAIL SEATS AND USE 4'-8 1/2" BETWEEN STRAIGHT RAIL SEAT GAUGES. LENGTH SHALL BE 8'-3"
- THIS DRAWING SHOWS TIE "O" PLACEMENT FOR SWITCH MACHINE ON LH/MAINLINE SIDE. USE OPPOSITE HAND FOR SWITCH MACHINE ON RH/TURNOUT SIDE
- SEE BILL OF MATERIALS ABOVE FOR TIES 1, 2, 5 AND 9


PLATING IS 3/4" THICK. RAISE OUTSIDE RAIL SEATS ACCORDINGLY. ALL RAIL SEATS ARE FLAT.

REV	DATE	BY	CHK	APP	DESCRIPTION

**PENINSULA CORRIDOR JOINT POWERS BOARD**

APPROVED BY:



1250 San Carlos Avenue  
San Carlos, CA 94070

**STANDARD DRAWINGS**

**SPECIAL TRACKWORK**  
**NO 14 TURNOUT**  
**HOLLOW STEEL TIE AND CONCRETE TIE**  
**LAYOUT FOR RH TURNOUT**

CADD FILE NO.: SD-2617

REV 0 DATE 093011

STANDARD NO.: SD-2617