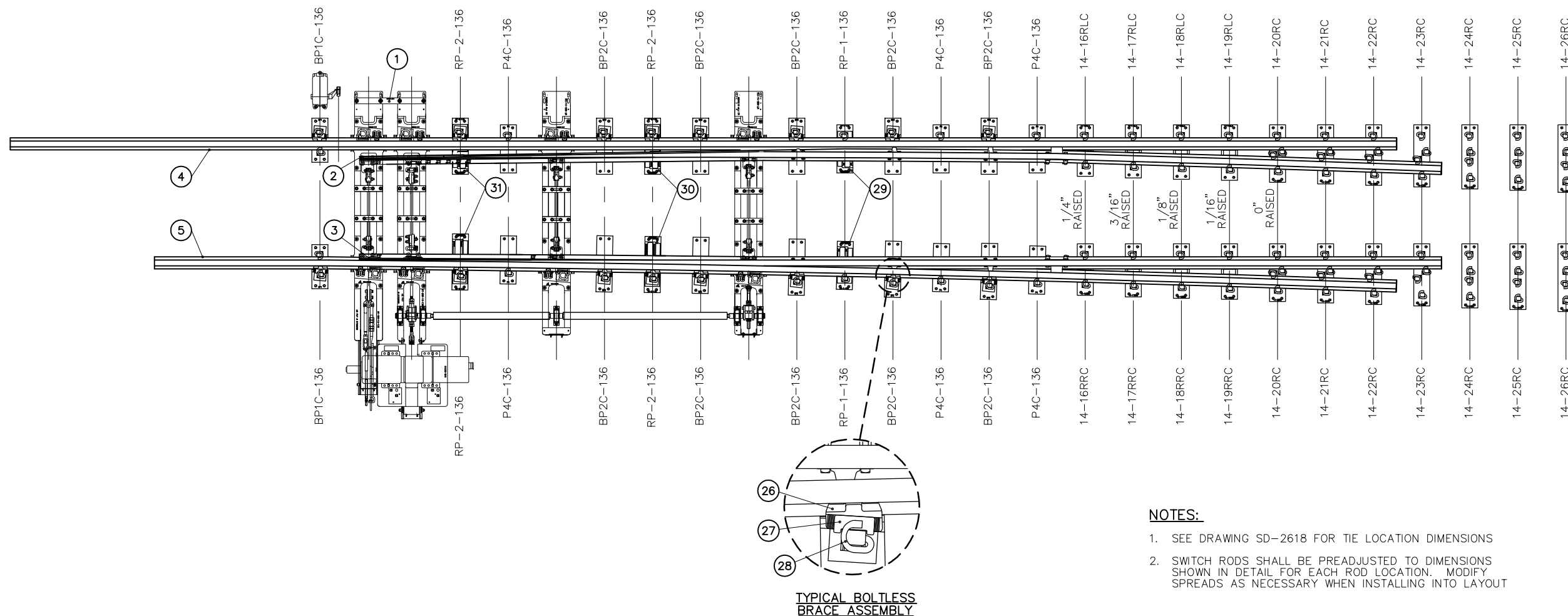


BILL OF MATERIAL				BILL OF MATERIAL			
ITEM	QTY	DESCRIPTION	DWG NO	ITEM	QTY	DESCRIPTION	DWG NO
1	1	HOLLOW SWITCH TIE & RODDING ASSEMBLY	SD-2621	16	1	PLATE, SWITCH (14-18RRC)	SD-2643
2	1	SAMSON POINT, 45'-0" LONG, UR MANG TIP, CURVED, LH	SD-2611	17	1	PLATE, SWITCH (14-19RLC)	SD-2644
3	1	SAMSON POINT, 45'-0" LONG, UR MANG TIP, STRAIGHT, RH	SD-2612	18	1	PLATE, SWITCH (14-19RRC)	SD-2644
4	1	SAMSON STOCK RAIL, 57'-8" LONG, STRAIGHT, LH	SD-2615	19	2	PLATE, SWITCH (14-20RC)	SD-2644
5	1	SAMSON STOCK RAIL, 51'-8" LONG, CURVED, RH	SD-2616	20	2	PLATE, SWITCH (14-21RC)	SD-2644
6	2	PLATE, SWITCH (BP1C-136)	SD-2302	21	2	PLATE, SWITCH (14-22RC)	SD-2644
7	10	PLATE, SWITCH (BP2C-136)	SD-2302	22	2	PLATE, SWITCH (14-23RC)	SD-2644
8	6	PLATE, SWITCH (P4C-136)	SD-2302	23	2	PLATE, SWITCH (14-24RC)	SD-2645
9	2	PLATE, SWITCH ROLLER SCHWIHAG RP-1-136	SD-2311	24	2	PLATE, SWITCH (14-25RC)	SD-2645
10	4	PLATE, SWITCH ROLLER SCHWIHAG RP-2-136	SD-2312	25	2	PLATE, SWITCH (14-26RC)	SD-2645
11	1	PLATE, SWITCH (14-16RLC)	SD-2643	26	16	BRACE, BOLTLESS, 136 LB RE 'SUREFIT'	-
12	1	PLATE, SWITCH (14-16RRC)	SD-2643	27	16	WASHER, SERRATED FOR BOLTLESS BRACE	-
13	1	PLATE, SWITCH (14-17RLC)	SD-2643	28	98	CLIP, PANDROL, E2055	-
14	1	PLATE, SWITCH (14-17RRC)	SD-2643	29	2	ROLLER SCHWIHAG, SINGLE	-
15	1	PLATE, SWITCH (14-18RLC)	SD-2643	30	2	ROLLER SCHWIHAG, DOUBLE	-
				31	2	ROLLER SCHWIHAG, TRIPLE	-



- NOTES:**
- SEE DRAWING SD-2618 FOR TIE LOCATION DIMENSIONS
 - SWITCH RODS SHALL BE PREADJUSTED TO DIMENSIONS SHOWN IN DETAIL FOR EACH ROD LOCATION. MODIFY SPREADS AS NECESSARY WHEN INSTALLING INTO LAYOUT

REV	DATE	BY	CHK	APP	DESCRIPTION

PENINSULA CORRIDOR JOINT POWERS BOARD

APPROVED BY:




ENGINEERING MANAGER DEPUTY DIRECTOR OF ENGINEERING



1250 San Carlos Avenue
San Carlos, CA 94070

STANDARD DRAWINGS

**SPECIAL TRACKWORK
NO 14 TURNOUT
RH SWITCH PACK WITH HOLLOW STEEL TIES
SWITCH MACHINE ON TURNOUT SIDE**

CADD FILE NO.:	SD-2608
REV	DATE
0	093011
SPECIAL TRACKWORK	
STANDARD NO.:	SD-2608