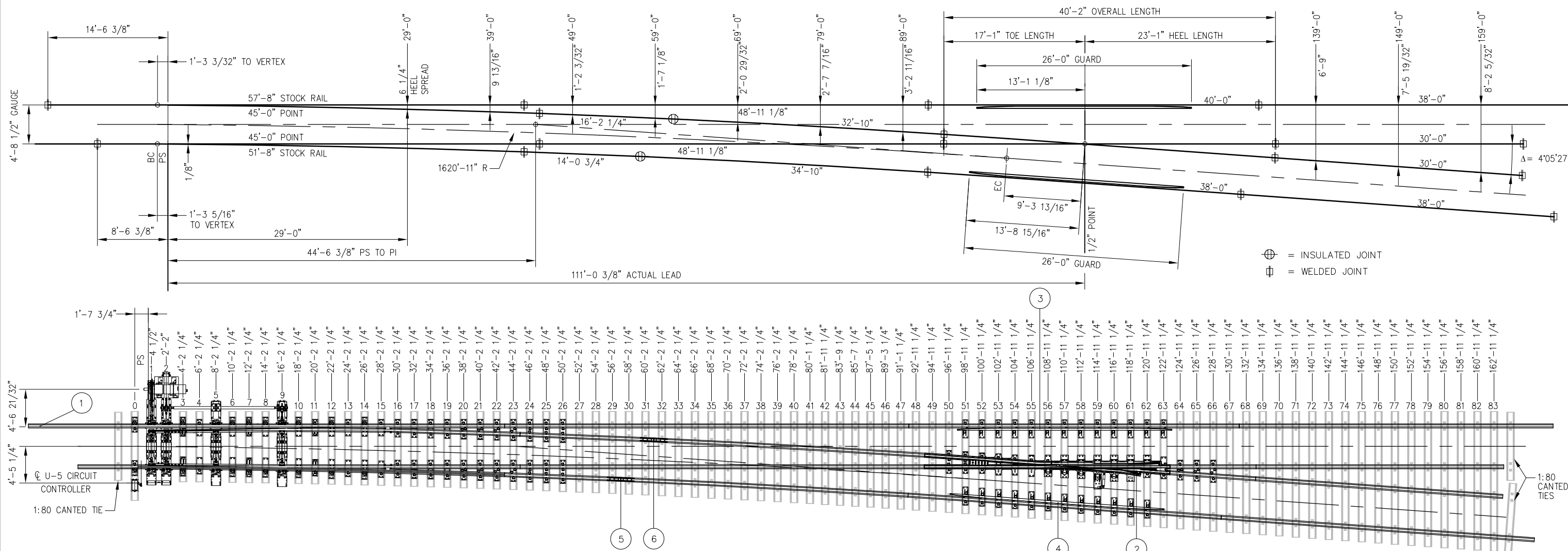


BILL OF MATERIAL				BILL OF MATERIAL			
ITEM	QTY	DESCRIPTION	DWG NO	ITEM	QTY	DESCRIPTION	DWG NO
1	1	SWITCH PACK, NO 14-136 LB RE MODIFIED TANGENTIAL, RH, HST	SD-2606	11	352	TIE SCREW, CONCRETE 7/8" DIA x 6" HEX HEAD	-
2	1	FROG PACK, NO 14-136 LB RE WSM, RH	SD-2624	12	352	WASHER FLAT 7/8" TYPE A NARROW 15/16" x 1 3/4" x 0.134"	-
3	1	GUARD RAIL ASSEMBLY BOLTLESS, 26'-0" LONG, 136 LB RE RAISED 1", STRAIGHT	SD-2301	13	352	SPRING WASHER, DOUBLE COIL (Fe6)	-
4	1	GUARD RAIL ASSEMBLY BOLTLESS, 26'-0" LONG, 136 LB RE RAISED 1", RH	SD-2636	14	1	CONCRETE TIE SET, 0-83 + (3) 1:80 TIES, PLATE PADS, PIM INSERTS, RH	SD-2617
5	1	INSULATED RAIL ASSEMBLY, 48'-10 3/4" C/W BONDED INSULATED JOINT	-	15	342	CLIP PANDROL E2055	-
6	1	INSULATED RAIL ASSEMBLY, 49'-0 1/4" C/W BONDED INSULATED JOINT	-	16	342	INSULATOR PANDROL FEATURES BASE HOLDOWN NYLON HD-10	-
7	2	DRILLED RAIL, 136 LB RE, 30'-0" LONG	-	17	8	CLIP PANDROL E2063	-
8	3	DRILLED RAIL, 136 LB RE, 38'-0" LONG	-	18	8	INSULATION, PANDROL NYLON 6790	-
9	1	DRILLED RAIL, 136 LB RE, 40'-0" LONG	-	19	175	TIE PAD PANDROL 6993SR	-
10	2	DRILLED RAIL, 136 LB RE, 48'-11 1/8" LONG	-	20	176	SHIM, TO REDUCE PLATE FLEXURE	-



⊕ = INSULATED JOINT
 ⊕ = WELDED JOINT

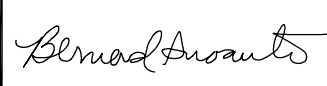


NOTES:

- ALL RAILS SHALL HAVE IDENTIFICATION COLOR CODE PAINTED ON WEB, CLEAR OF JOINT AREA
- RAIL LENGTHS ALLOW 1/8" GAP BETWEEN RAIL JOINTS FOR WELDING
- GUARD RAILS ARE RAISED 1" AND FORM A 1 7/8" FLANGWAY
- COORDINATE SWITCH MACHINE AND MACHINE PLATE (NIC) WITH CALTRAIN
- ALL TIE LENGTHS SHALL INCLUDE 1'-9" FROM TIE ENDS TO RAIL CENTERLINE, EXCEPT AS NOTED AND 1:80 CANTED TIES
- TIGHTEN TIE SCREW WITH DOUBLE COIL SPRING WASHER IN PLACE
- SCHWIHAG ROLLERS SHALL BE INSTALLED AND ADJUSTED IN THE FIELD

TURNOUT DATA

FROG		ANGLE	4'05'27"	ACTUAL LEAD:	111'-3/8"
		TOE LENGTH:	17'-1"	CLOSURE AREA	
		HEEL LENGTH:	23'-1"	CENTERLINE RADIUS:	1620'-11"
		TOTAL LENGTH:	40'-2"	DEGREE OF CURVE:	3'32'07"
SWITCH		LENGTH OF POINTS:	45'-0"	DESIGN SPEEDS	
		VERTEX DISTANCE:	1'-3 7/32"	35 MPH PASSENGER @ 3" UNBALANCE	
		ENTRY ANGLE:	0'29'50"	25 MPH FREIGHT @ 2" UNBALANCE	
		THICKNESS AT POINT:	1/8"		
		THROW AT ROD #1:	4 3/4"		

REV	DATE	BY	CHK	APP	DESCRIPTION

PENINSULA CORRIDOR JOINT POWERS BOARD		STANDARD DRAWINGS		CADD FILE NO.: SD-2602
APPROVED BY:		NO 14 TURNOUT		REV 0 DATE 093011
 ENGINEERING MANAGER		 DEPUTY DIRECTOR OF ENGINEERING		SPECIAL TRACKWORK
 1250 San Carlos Avenue San Carlos, CA 94070		NO 14 RH TURNOUT WITH WSM FROG AND HST SWITCH MACHINE ON MAINLINE SIDE		STANDARD NO.: SD-2602