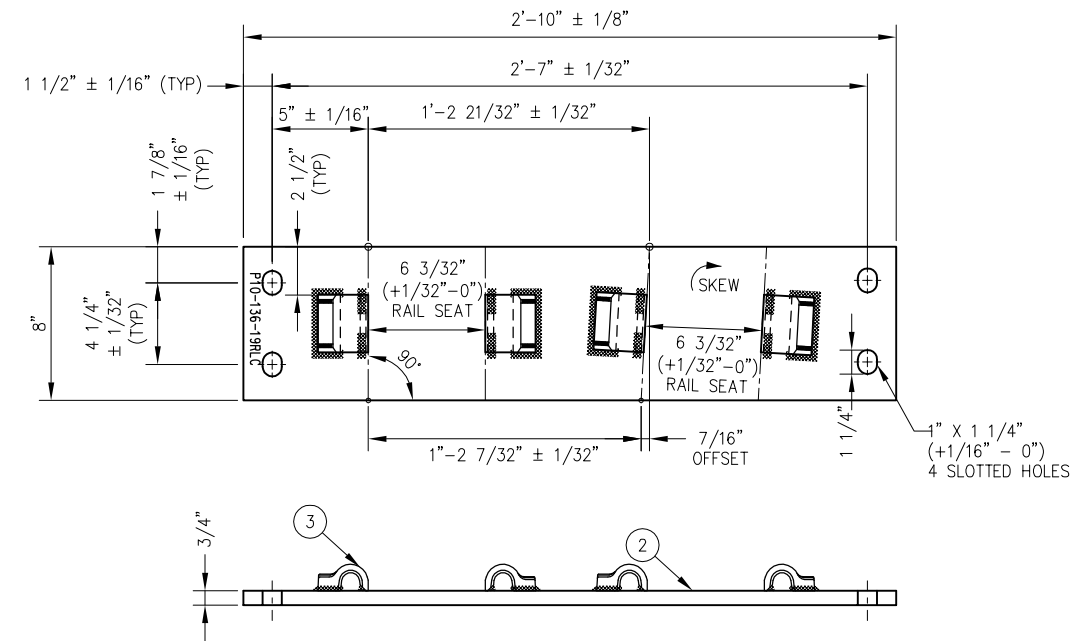
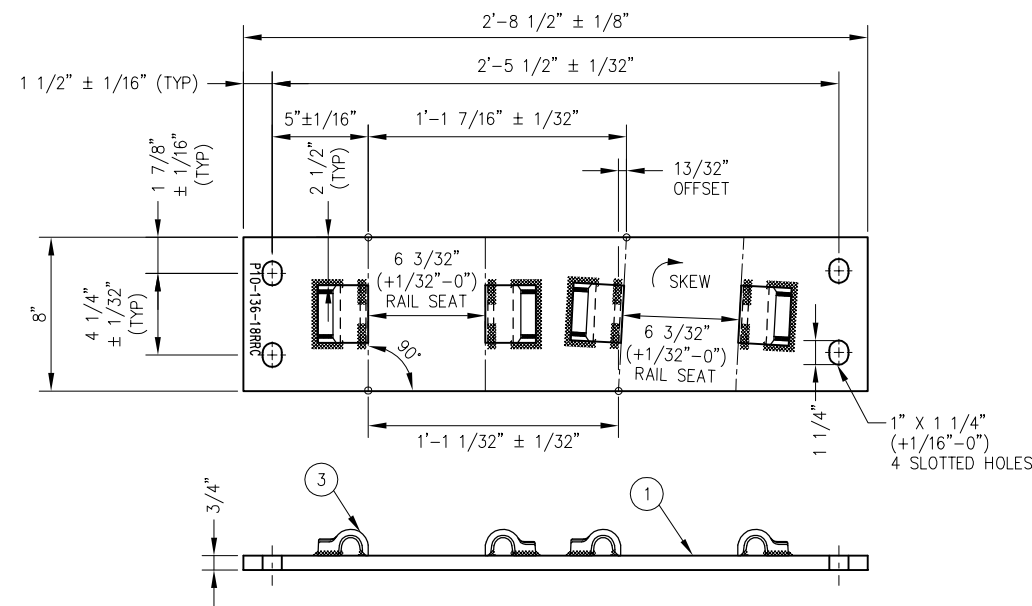


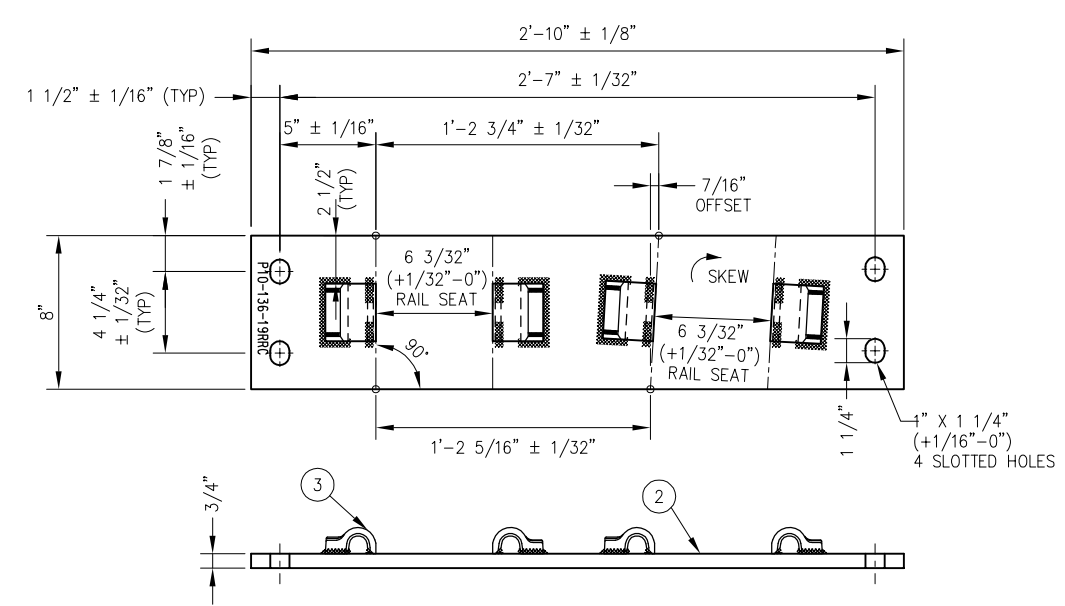
SWITCH PLATE P10-136-18RLC



SWITCH PLATE P10-136-19RLC



SWITCH PLATE P10-136-18RRC



SWITCH PLATE P10-136-19RRC

| BILL OF MATERIALS |  |
|-------------------|--|
| ITEM              | DESCRIPTION                                    |
| 1                 | FLAT BAR, ASTM A36, 3/4" x 8" x 2'-8 1/2" LONG |
| 2                 | FLAT BAR, ASTM A36, 3/4" x 8" x 2'-10" LONG    |
| 3                 | SHOULDER, PANDROL, FORGED TONGUELESS, TYPE 1   |

NOTES

- I.D. CHARACTERS SHALL BE 1/2" MINIMUM HEIGHT CLEARLY STAMPED AS SHOWN
- WELDS SHALL BE DRESSED FLUSH WITH SHOULDER & NOT TO PROTRUDE INTO RAIL SEAT
- SLOTTED HOLE CENTERS ARE INDICATED ON DRAWING

PENINSULA CORRIDOR JOINT POWERS BOARD

APPROVED BY:

*Bernard Anzures* *Steph Chen*  
ENGINEERING MANAGER DEPUTY DIRECTOR OF ENGINEERING



STANDARD DRAWINGS

SPECIAL TRACKWORK  
NO 10 TURNOUT  
SWITCH PLATES FOR RH TURNOUT,  
10-18RLC/RRC THROUGH 10-19RLC/RRC

|                        |        |
|------------------------|--------|
| CADD FILE NO.: SD-2545 |        |
| REV                    | DATE   |
| 0                      | 093011 |
| SPECIAL TRACKWORK      |        |
| STANDARD NO.: SD-2545  |        |

| REV | DATE | BY | CHK | APP | DESCRIPTION |
|-----|------|----|-----|-----|-------------|
|     |      |    |     |     |             |
|     |      |    |     |     |             |
|     |      |    |     |     |             |
|     |      |    |     |     |             |