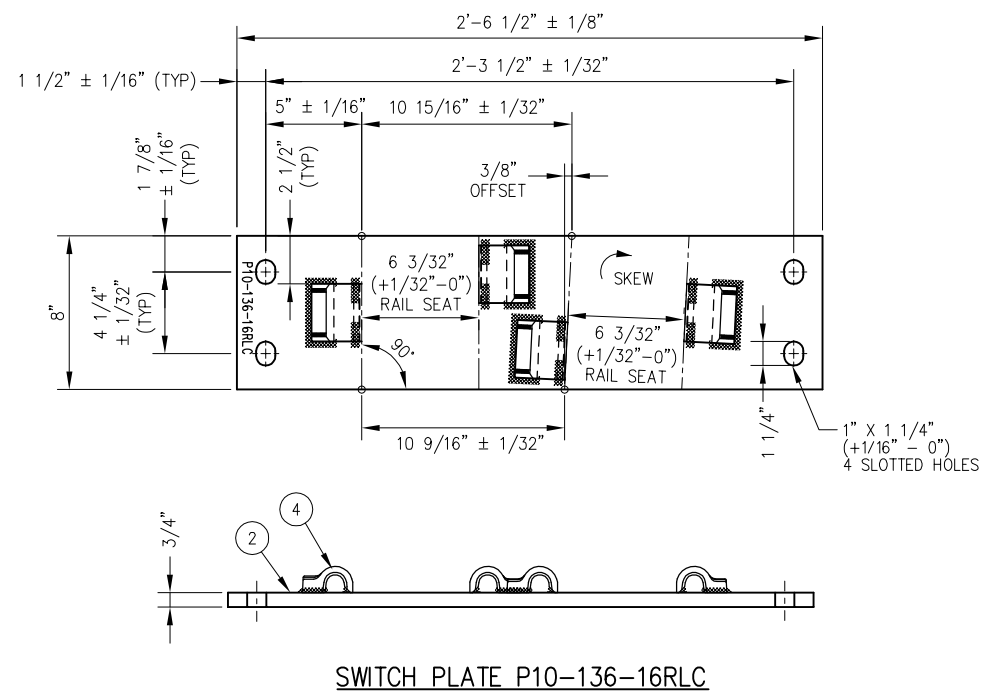
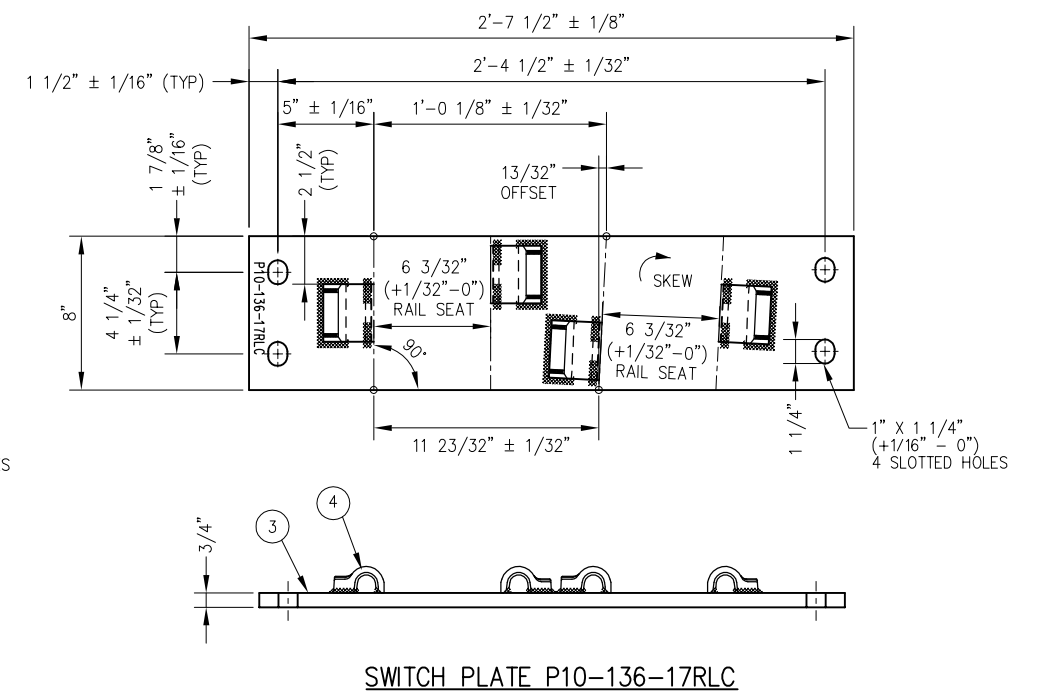


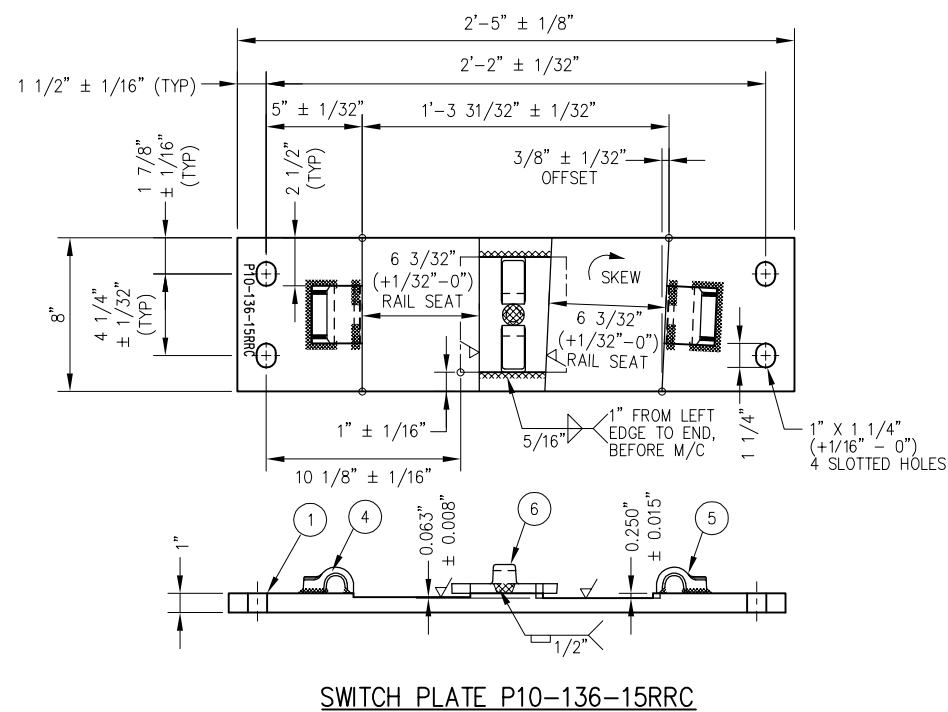
SWITCH PLATE P10-136-15RLC



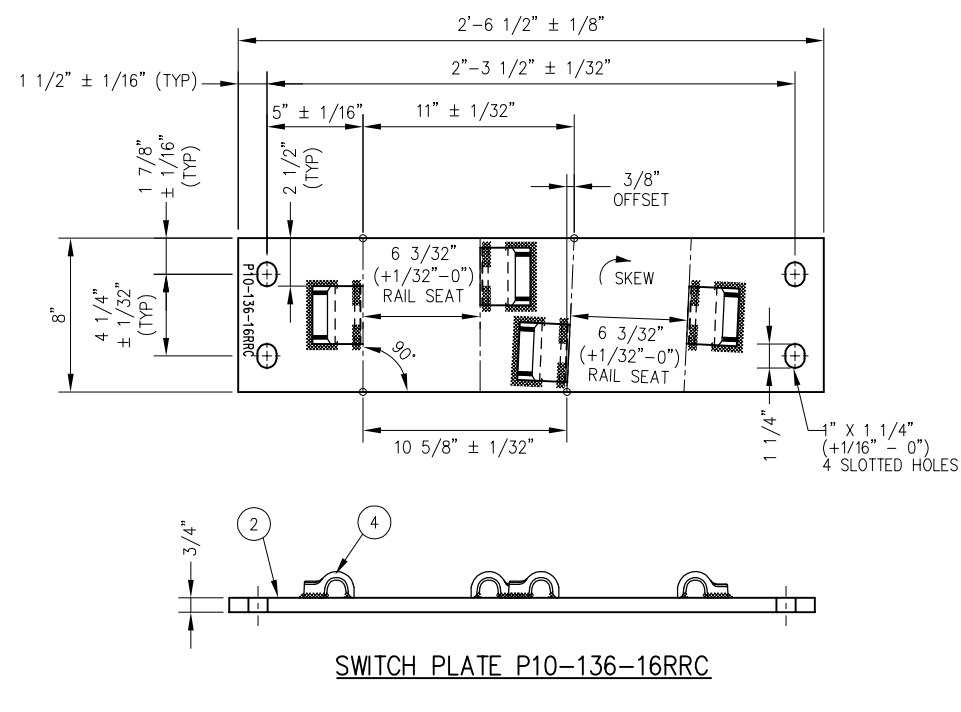
SWITCH PLATE P10-136-16RLC



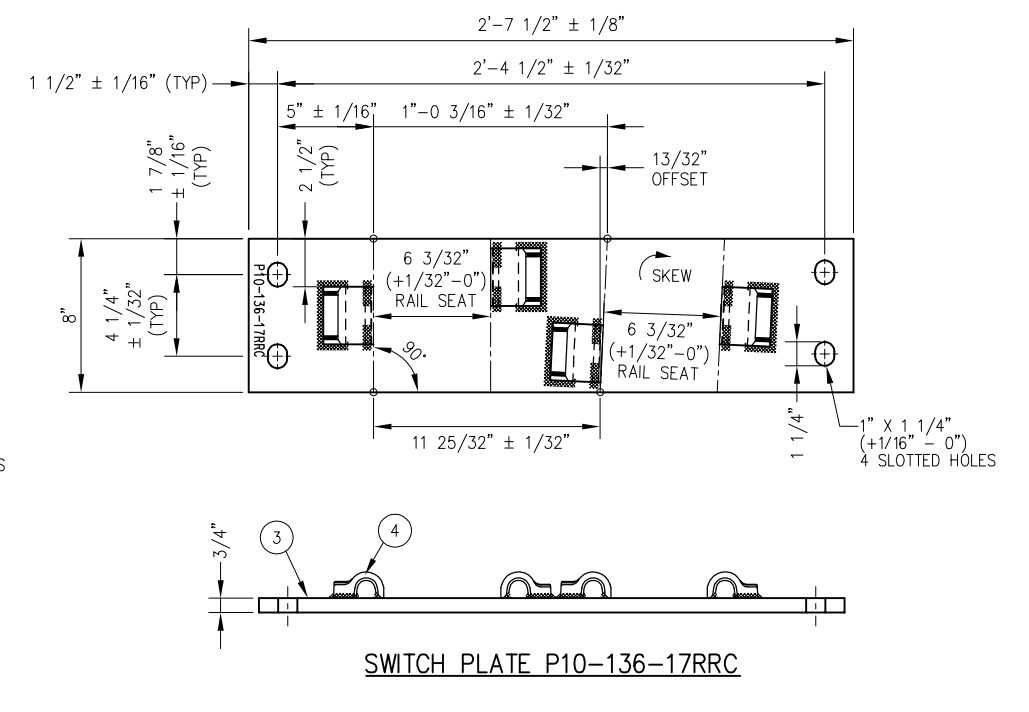
SWITCH PLATE P10-136-17RLC



SWITCH PLATE P10-136-15RRC



SWITCH PLATE P10-136-16RRC






SWITCH PLATE P10-136-17RRC

BILL OF MATERIALS	
ITEM	DESCRIPTION
1	FLAT BAR, ASTM A36, 1" x 8" x 2'-5" LONG
2	FLAT BAR, ASTM A36, 3/4" x 8" x 2'-6 1/2" LONG
3	FLAT BAR, ASTM A36, 3/4" x 8" x 2'-7 1/2" LONG
4	SHOULDER, PANDROL, FORGED TONGUELESS, TYPE 1
5	SHOULDER, PANDROL, FORGED TONGUELESS, TYPE 5
6	STOP WITH INTEGRAL T-BOLT HOLD DOWN

NOTES

- I.D. CHARACTERS SHALL BE 1/2" MINIMUM HEIGHT CLEARLY STAMPED AS SHOWN
- WELDS SHALL BE DRESSED FLUSH WITH SHOULDER & NOT TO PROTRUDE INTO RAIL SEAT
- SLOTTED HOLE CENTERS ARE INDICATED ON DRAWING

REV	DATE	BY	CHK	APP	DESCRIPTION

PENINSULA CORRIDOR JOINT POWERS BOARD		STANDARD DRAWINGS		CADD FILE NO: SD-2544
APPROVED BY:		 1250 San Carlos Avenue San Carlos, CA 94070		REV: 0 DATE: 093011
 ENGINEERING MANAGER				 DEPUTY DIRECTOR OF ENGINEERING
				STANDARD NO.: SD-2544