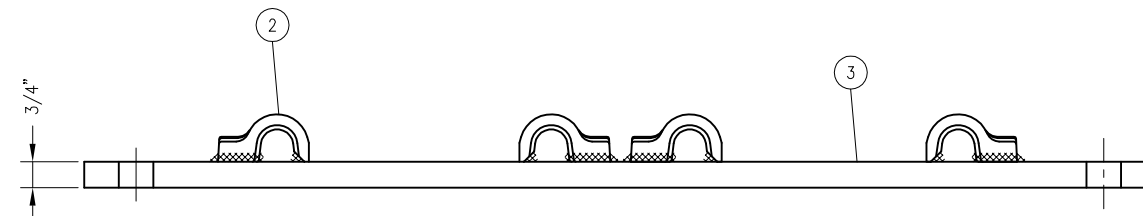
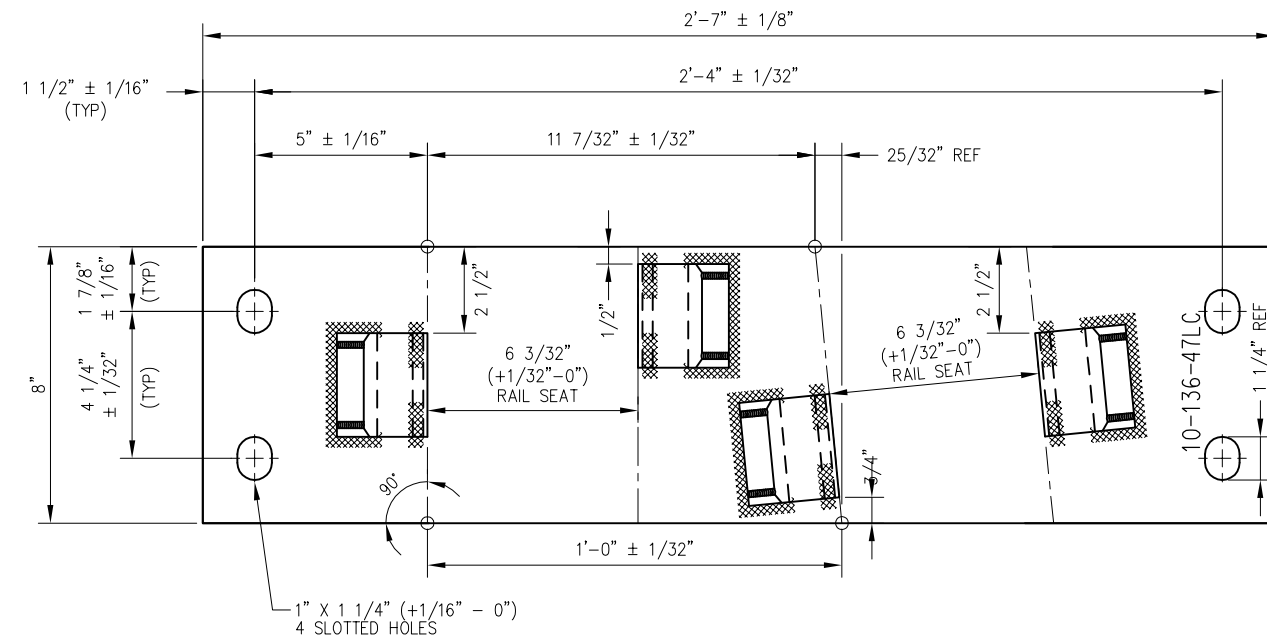
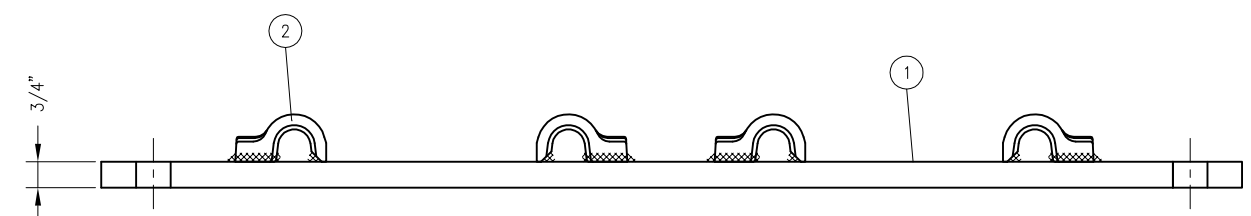
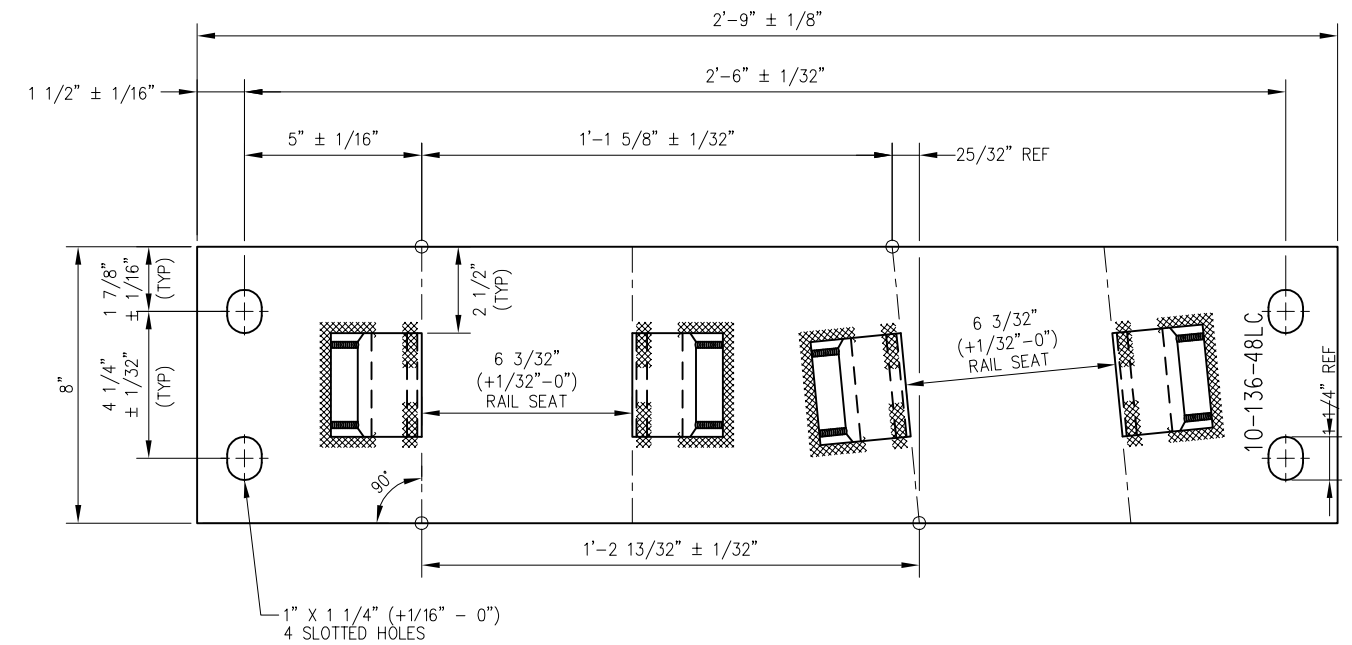


BILL OF MATERIAL				
ITEM	QTY FOR 10-47LC	QTY FOR 10-48LC	DESCRIPTION	DWG NO
1	0	1	FLAT BAR, ASTM A36, 3/4" X 8" X 2'-9" LONG	-
2	4	4	SHOULDER, PANDROL, FORGED TONGUELESS, TYPE 1	-
3	1	0	FLAT BAR, ASTM A36, 3/4" X 8" X 2'-7" LONG	-



FROG BASE PLATE 10-136-47LC



FROG BASE PLATE 10-136-48LC

NOTES

1. I.D. CHARACTERS SHALL BE 1/2" MINIMUM HEIGHT CLEARLY STAMPED AS SHOWN.
2. WELDS SHALL BE DRESSED FLUSH WITH SHOULDER & NOT TO PROTRUDE INTO RAIL SEAT.
3. SEE SD-2525 FOR SHOULDER WELDING DETAILS.

PENINSULA CORRIDOR JOINT POWERS BOARD

APPROVED BY:

Bernard Anzures *Steph Chen*
ENGINEERING MANAGER DEPUTY DIRECTOR OF ENGINEERING



STANDARD DRAWINGS

SPECIAL TRACKWORK
NO 10 TURNOUT
WSM FROG LH
FROG BASE PLATES 10-47LC AND 10-48LC

CADD FILE NO.: SD-2532	
REV 0	DATE 093011
SPECIAL TRACKWORK	
STANDARD NO.: SD-2532	

REV	DATE	BY	CHK	APP	DESCRIPTION