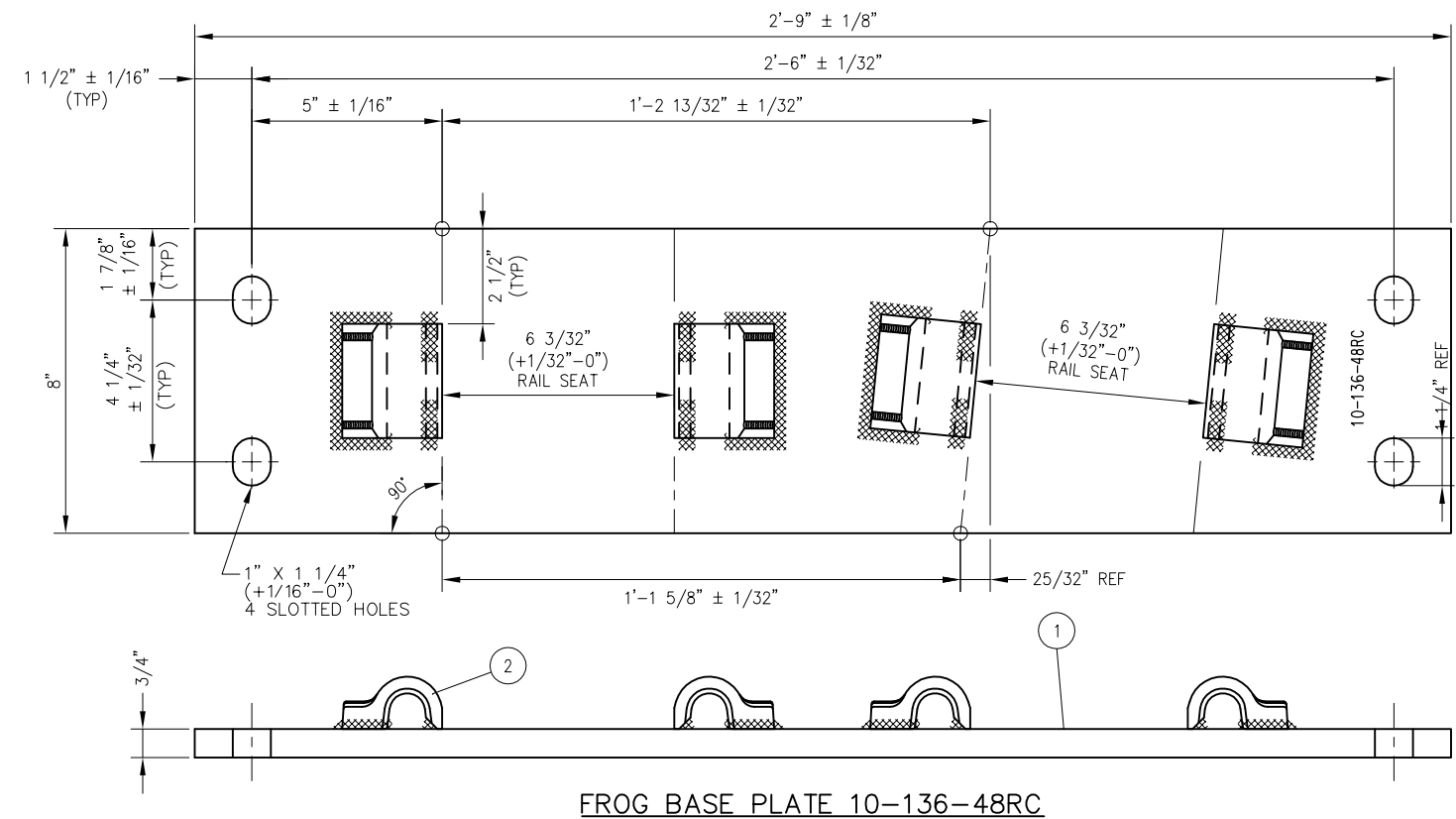
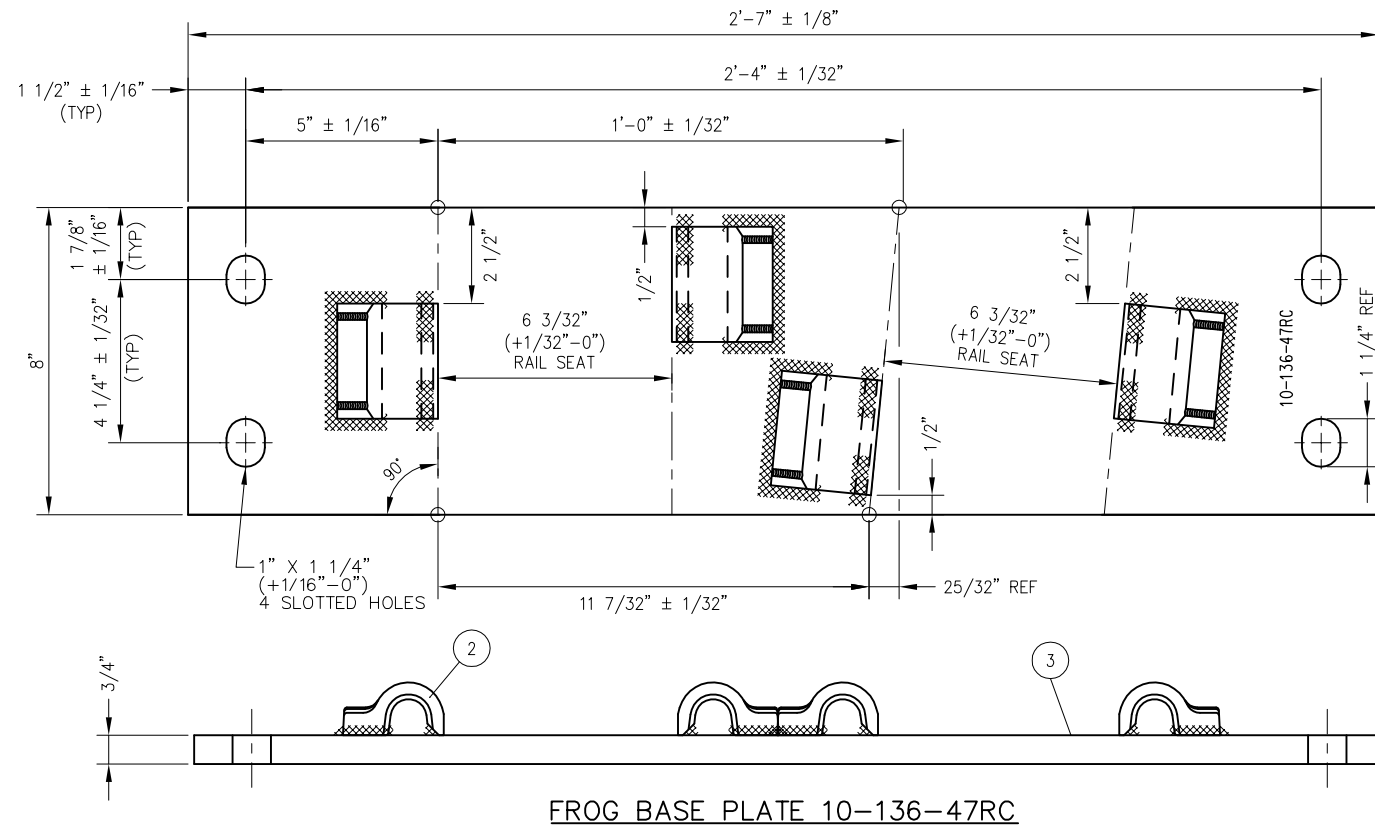


BILL OF MATERIAL				
ITEM	QTY FOR 10-47RC	QTY FOR 10-48RC	DESCRIPTION	DWG NO
1	0	1	FLAT BAR, ASTM A36, 3/4" X 8" X 2'-9" LONG	-
2	4	4	SHOULDER, PANDROL, FORGED TONGUELESS, TYPE 1	-
3	1	0	FLAT BAR, ASTM A36, 3/4" X 8" X 2'-7" LONG	-





**NOTES**

1. I.D. CHARACTERS SHALL BE 1/2" MINIMUM HEIGHT CLEARLY STAMPED AS SHOWN
2. WELDS SHALL BE DRESSED FLUSH WITH SHOULDER & NOT TO PROTRUDE INTO RAIL SEAT
3. SEE SD-2525 FOR SHOULDER WELDING DETAILS


REV	DATE	BY	CHK	APP	DESCRIPTION

**PENINSULA CORRIDOR JOINT POWERS BOARD**

APPROVED BY:

ENGINEERING MANAGER      DEPUTY DIRECTOR OF ENGINEERING



1250 San Carlos Avenue  
 San Carlos, CA 94070

**STANDARD DRAWINGS**

SPECIAL TRACKWORK  
 NO 10 TURNOUT  
 WSM FROG RH  
 FROG BASE PLATES 10-47RC AND 10-48RC

CADD FILE NO.: SD-2531	
REV 0	DATE 093011
SPECIAL TRACKWORK	
STANDARD NO.: SD-2531	