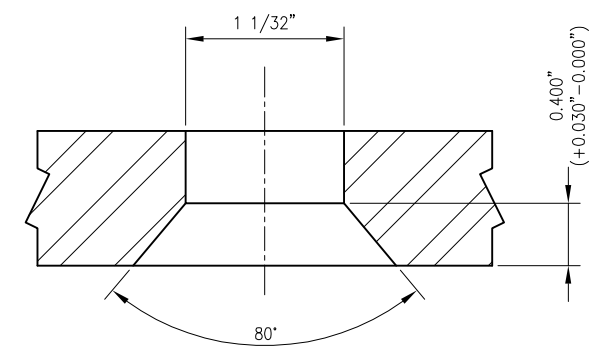
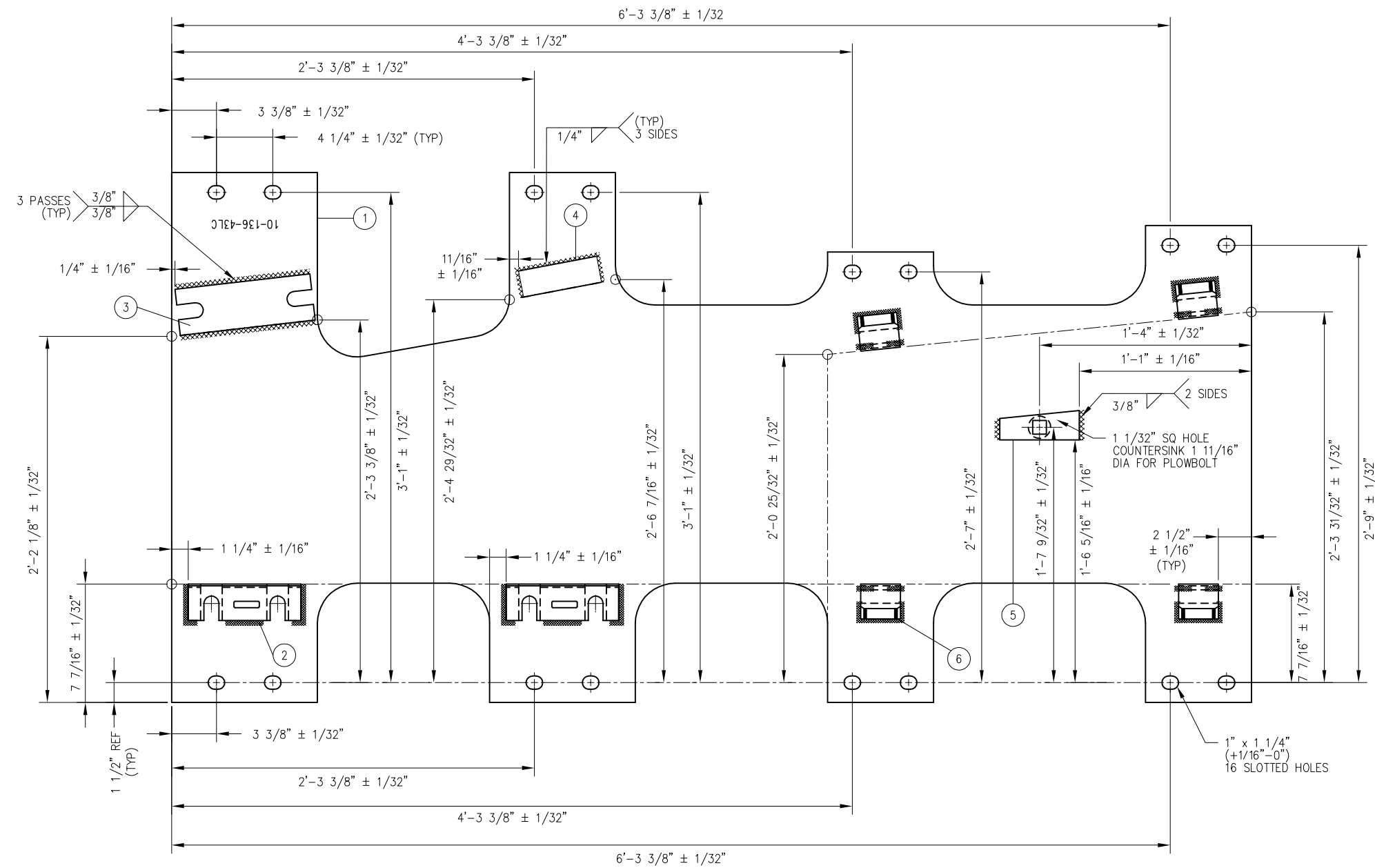


BILL OF MATERIAL			
ITEM	QTY	DESCRIPTION	DWG NO
1	1	BURNED PLATE, 3/4" THICK	-
2	2	CAPTURE BLOCK FOR PLATE CLIP	-
3	1	CAPTURE BLOCK FOR HORN KEEPER	-
4	1	FLAT BAR, ASTM A36, 1/2" THICK x 2" x 6" LONG	-
5	1	STOP 6" x 1 19/32" x 2 7/32" x 7/16" THICK	-
6	4	SHOULDER, PANDROL, FORGED TONGUELESS, TYPE 1	-



COUNTERSINK DETAIL
(PLOW BOLT)

NOTES

- I.D. CHARACTERS SHALL BE 1/2" MINIMUM HEIGHT CLEARLY STAMPED AS SHOWN
- WELDS SHALL BE DRESSED FLUSH WITH SHOULDERS AND STOPS AND NOT TO PROTRUDE INTO RAIL SEAT
- OPENINGS IN BOLT CAPTURE BLOCKS SHALL BE FREE OF WELD AND SPATTER
- SLOTTED HOLE CENTERS ARE INDICATED ON DRAWING
- SEE SD-2525 FOR SHOULDER WELDING DETAIL

BASE PLATE 10-43LC

REV	DATE	BY	CHK	APP	DESCRIPTION

PENINSULA CORRIDOR JOINT POWERS BOARD

APPROVED BY:




ENGINEERING MANAGER DEPUTY DIRECTOR OF ENGINEERING



1250 San Carlos Avenue
 San Carlos, CA 94070

STANDARD DRAWINGS		CADD FILE NO.:
SPECIAL TRACKWORK NO 10 TURNOUT WSM FROG LH FROG BASE PLATE 10-43LC		SD-2530
REV	DATE	
0	093011	
STANDARD NO.:		SD-2530