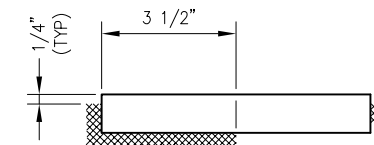
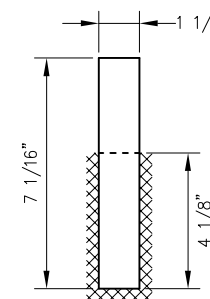


FROG BASE PLATE 110-39RC

| BILL OF MATERIAL | | | |
|------------------|-----|--|--------|
| ITEM | QTY | DESCRIPTION | DWG NO |
| 1 | 1 | BURNED PLATE, 3/4" THICK | - |
| 2 | 2 | CAPTURE BLOCK FOR PLATE CLIP | - |
| 3 | 2 | CAPTURE BLOCK FOR HORN KEEPER | - |
| 4 | 1 | CAPTURE BLOCK FOR SPRING BOX | - |
| 5 | 1 | WELD ON BRACE | - |
| 6 | 2 | SHOULDER, PANDROL, FORGED TONGUELESS, TYPE 1 | - |
| 7 | 1 | FLAT BAR, ASTM A36, 1/2" x 7" x 1" LONG | - |



STOP WELDING DETAIL



7 1/16" x 1 1/4" x 1/2"
WELD ON BRACE

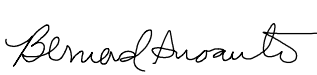

NOTES

1. I.D. CHARACTERS SHALL BE 1/2" MINIMUM HEIGHT CLEARLY STAMPED AS SHOWN
2. WELDS SHALL BE DRESSED FLUSH WITH SHOULDERS AND STOPS AND NOT TO PROTRUDE INTO RAIL SEAT
3. OPENINGS IN BOLT CAPTURE BLOCKS SHALL BE FREE OF WELD AND SPATTER
4. SLOTTED HOLE CENTERS ARE INDICATED ON DRAWING
5. SEE SD-2525 FOR SHOULDER WELDING DETAIL


| REV | DATE | BY | CHK | APP | DESCRIPTION |
|-----|------|----|-----|-----|-------------|
| | | | | | |
| | | | | | |
| | | | | | |

PENINSULA CORRIDOR JOINT POWERS BOARD

APPROVED BY:

ENGINEERING MANAGER DEPUTY DIRECTOR OF ENGINEERING



1250 San Carlos Avenue
 San Carlos, CA 94070

| STANDARD DRAWINGS | |
|--|---------|
| SPECIAL TRACKWORK NO 10 TURNOUT WSM FROG RH FROG BASE PLATE 10-39RC | |
| CADD FILE NO.: | SD-2527 |
| REV | DATE |
| 0 | 093011 |
| SPECIAL TRACKWORK | |
| STANDARD NO.: | SD-2527 |