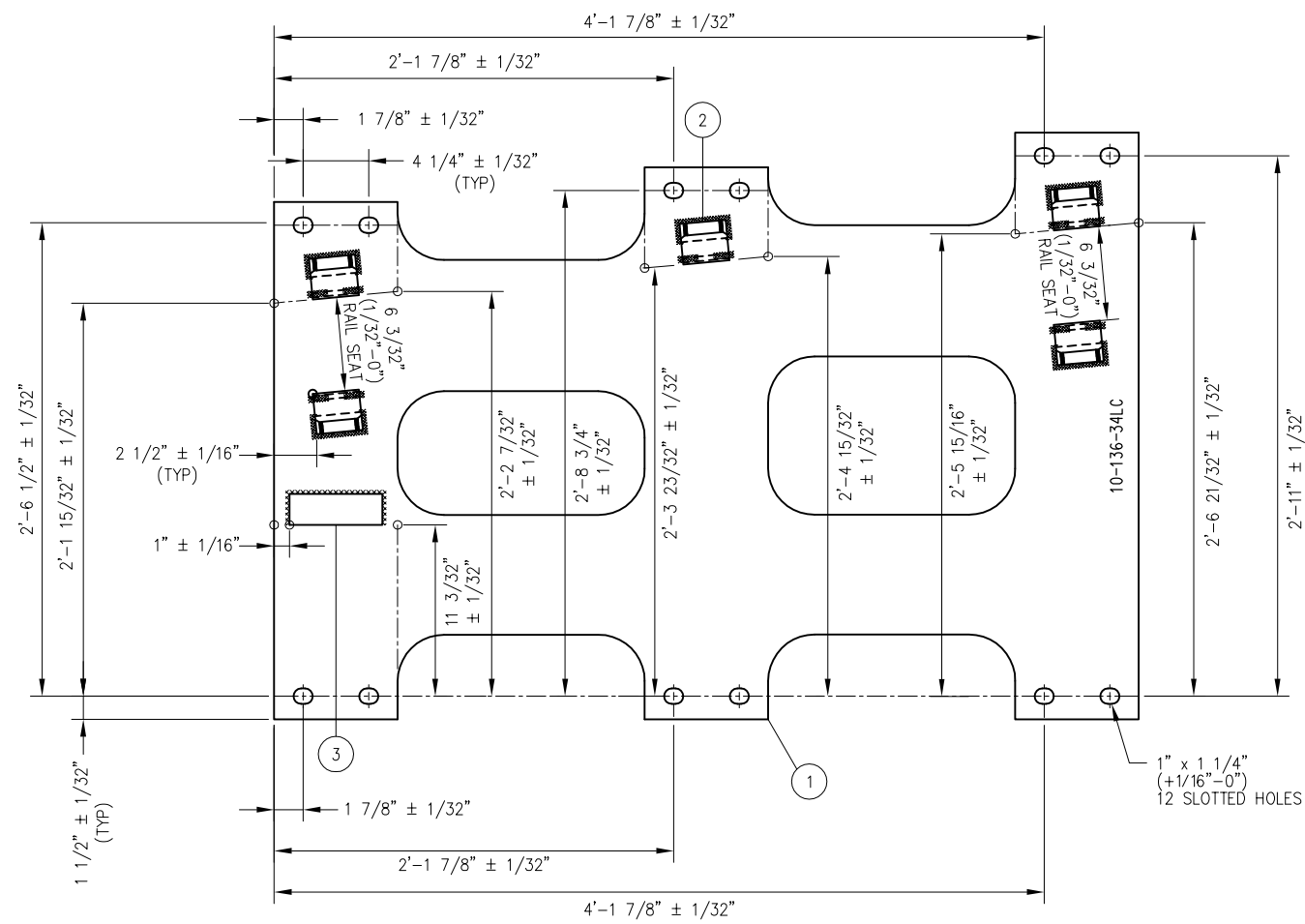
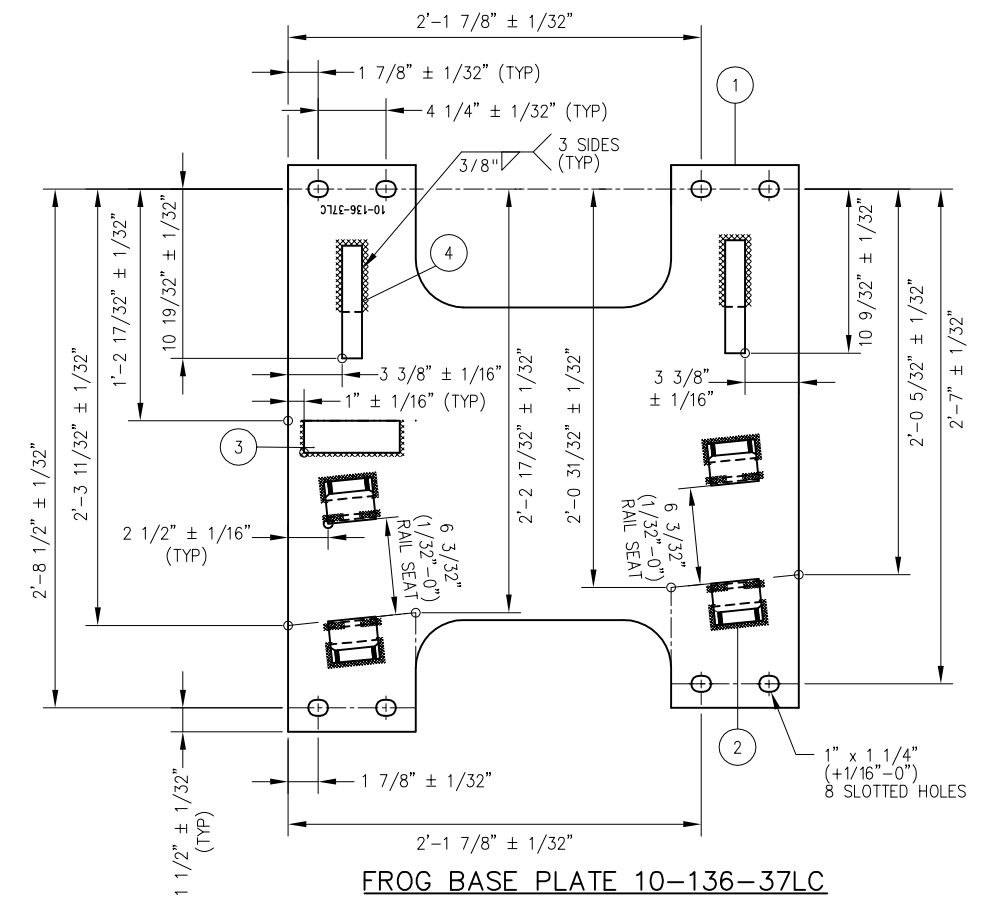


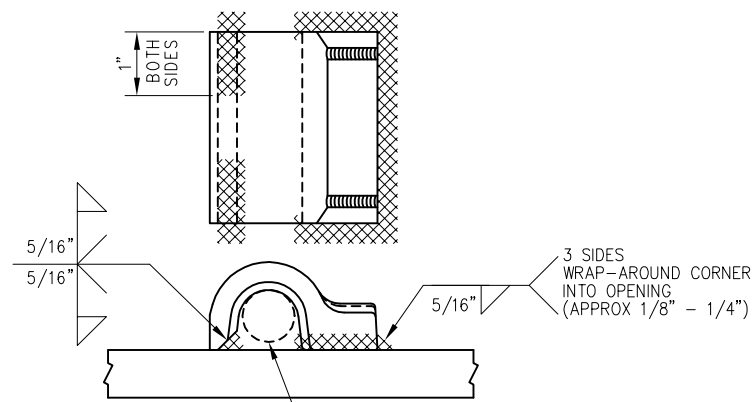
BILL OF MATERIAL				
ITEM	QTY FOR 10-34LC	QTY FOR 10-37LC	DESCRIPTION	DWG NO
1	1	1	BURNED PLATE, 3/4" THICK	-
2	5	4	SHOULDER, PANDROL, FORGED TONGUELESS, TYPE 1	-
3	1	1	FLAT BAR, ASTM A36, 2" x 6" x 1/2" THICK	-
4	0	2	BURNED BRACE, 132/136 LB RE, HR A36 1 1/4" THICK	-



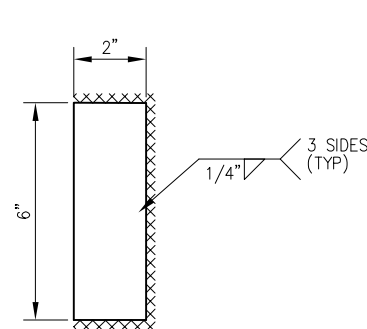
FROG BASE PLATE 10-136-34LC



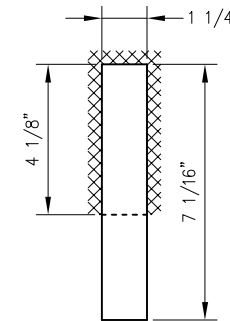
FROG BASE PLATE 10-136-37LC



FORGED SHOULDER WELDING DETAIL



2" x 6" x 1/2"
STOP WELDING DETAIL



7 1/16" x 1 1/4" x 1/2"
132/136 LB RE BURNED BRACE

NOTES

- I.D. CHARACTERS SHALL BE 1/2" MINIMUM HEIGHT CLEARLY STAMPED AS SHOWN
- WELDS SHALL BE DRESSED FLUSH WITH SHOULDERS AND STOPS AND NOT TO PROTRUDE INTO RAIL SEAT
- SLOTTED HOLE CENTERS ARE INDICATED ON DRAWING
- SHOULDERS SHALL BE WELDED ON AFTER FITTING TOE BLOCK

REV	DATE	BY	CHK	APP	DESCRIPTION	REV	DATE	BY	CHK	APP	DESCRIPTION

PENINSULA CORRIDOR JOINT POWERS BOARD

APPROVED BY:

Bernard Anagnostis *Steph Chen*

ENGINEERING MANAGER DEPUTY DIRECTOR OF ENGINEERING

Caltrain

1250 San Carlos Avenue
San Carlos, CA 94070

STANDARD DRAWINGS

SPECIAL TRACKWORK
NO 10 TURNOUT
WSM FROG LH
FROG BASE PLATES 10-34LC AND 10-37LC

CADD FILE NO.: SD-2526

REV	DATE
0	093011

STANDARD NO.: SD-2526