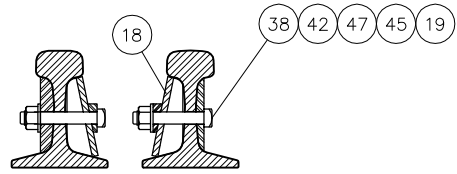


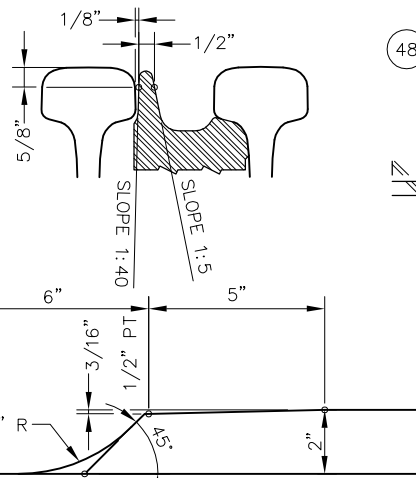
HORN KEEPER DETAIL

A SECTION  
SCALE: NTS



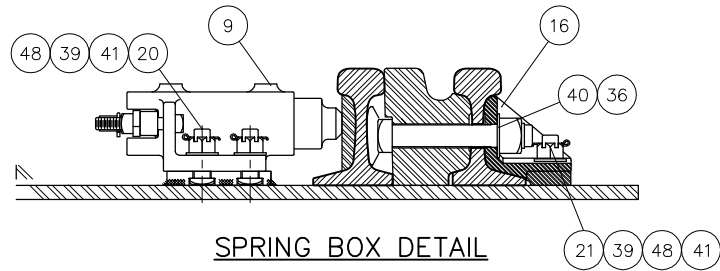
FOOT GUARD DETAIL

B SECTION  
SCALE: NTS



POINT DETAIL

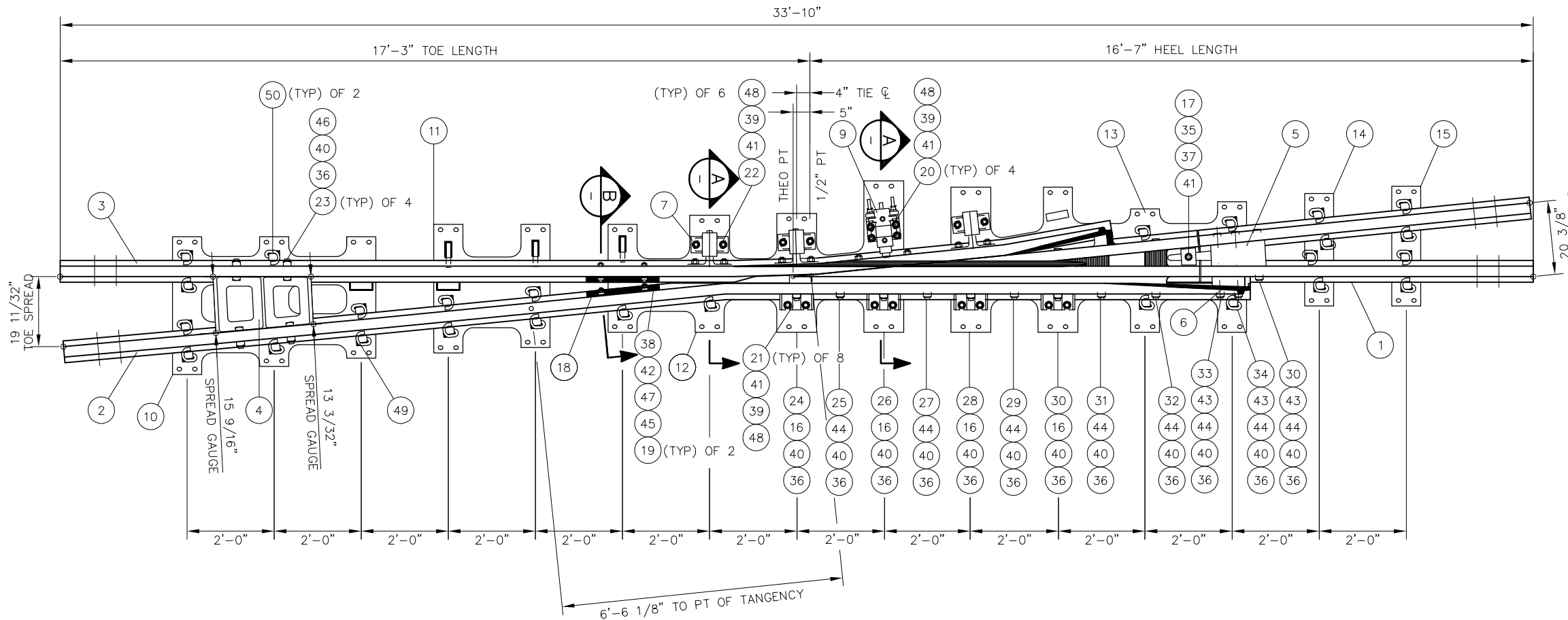
1 DETAIL  
SCALE: NTS



SPRING BOX DETAIL

C SECTION  
SCALE: NTS




BILL OF MATERIAL				BILL OF MATERIAL			
ITEM	QTY	DESCRIPTION	DWG NO	ITEM	QTY	DESCRIPTION	DWG NO
1	1	NO 10-136 LB RE SPRING FROG, LH POINT ASSEMBLY	-	26	1	BOLT, 1 3/8" DIA x 9" SQ HEAD, GR 8	-
2	1	SPRING WING RAIL, NO 10-136 LB RE, RIGID, LH	-	27	1	BOLT, 1 3/8" DIA x 9 1/2" SQ HEAD, GR 8	-
3	1	SPRING WING RAIL, NO 10-136 LB RE, LH, C/W HARDWARE	-	28	1	BOLT, 1 3/8" DIA x 11" SQ HEAD, GR 8	-
4	1	TOE BLOCK (SFTB136RE-10A)	-	29	1	BOLT, 1 3/8" DIA x 12" SQ HEAD, GR 8	-
5	1	HEEL BLOCK (SFHB136RE-10A)	-	30	2	BOLT, 1 3/8" DIA x 13 1/2" SQ HEAD, GR 8	-
6	1	FLARE FILLER BLOCK (FB136WHM-RCR)	-	31	1	BOLT, 1 3/8" DIA x 14 1/2" SQ HEAD, GR 8	-
7	3	HORN KEEPER, REVERSIBLE	-	32	1	BOLT, 1 3/8" DIA x 16" SQ HEAD, GR 8	-
8	3	HORN KEEPER WEAR PLATE, REVERSIBLE	-	33	1	BOLT, 1 3/8" DIA x 17 1/2" SQ HEAD, GR 8	-
9	1	SPRING BOX ASSEMBLY	-	34	1	BOLT, 1 3/8" DIA x 18" SQ HEAD, GR 8	-
10	1	FROG BASE PLATE (10-136-34LC)	SD-2526	35	1	PLOW BOLT, 1" DIA x 4" ROUND HD, SQ NECK, GR 8	-
11	1	FROG BASE PLATE (10-136-37LC)	SD-2526	36	16	NUT, SECURITY LOCK, 1 3/8" DIA HEAVY HEX	-
12	1	FROG BASE PLATE (10-136-39LC)	SD-2528	37	1	NUT, SECURITY LOCK, 1" DIA HEAVY HEX	-
13	1	FROG BASE PLATE (10-136-43LC)	SD-2530	38	2	NUT, SECURITY LOCK, 3/4" DIA HEAVY HEX	-
14	1	FROG PLATE (10-136-47LC)	SD-2532	39	18	NUT, SLOTTED, 1" DIA HEAVY HEX	-
15	1	FROG PLATE (10-136-48LC)	SD-2532	40	16	WASHER, HARDENED, 1 3/8" DIA x 5/32" THICK	-
16	4	PLATE CLIP, 136 LB RE	-	41	11	WASHER, HARDENED, 1" DIA x 5/32" THICK	-
17	1	HOLD-DOWN CLIP (10A1)	-	42	2	WASHER, HARDENED, 3/4" DIA x 3/16" THICK	-
18	1	FOOT GUARD, 136 LB RE x 1'-8" LONG	-	43	3	WASHER, HEADLOCK	-
19	2	BOLT, 3/4" DIA x 4 1/2" SQ HEAD, GR 8	-	44	8	WASHER, TAIL	-
20	4	BOLT, 1" DIA x 3", THIN SQ HEAD, DRILLED 2 1/2", GR 5	-	45	2	WASHER, TAIL, 1/2" x 3" FOR 3/4" BOLT	-
21	8	BOLT, 1" DIA x 3", THIN SQ HEAD, DRILLED 2 3/32", GR 5	-	46	4	WASHER, TAIL	-
22	6	BOLT, 1" DIA x 3 1/2", THIN SQ HEAD, DRILLED 2 11/16", GR 5	-	47	2	WASHER, BEVELED, FOR 3/4" BOLT	-
23	4	BOLT, 1 3/8" DIA x 5" SQ HEAD, GR 8	-	48	18	COTTER PIN, 1/4" DIA x 2" LONG	-
24	1	BOLT, 1 3/8" DIA x 6 1/2" SQ HEAD, GR 8	-	49	26	CLIP, PANDROL E2055	-
25	1	BOLT, 1 3/8" DIA x 7 1/2" SQ HEAD, GR 8	-	50	3	SHOULDER, FORGED TYPE 1	-



NOTES:

- RETARDER CLOSING TIME RANGES FROM 1 TO 3 MINUTES
- SPRING BOX LOAD IS 300 LBS/IN
- SPRING WING SHALL BE THROWN TO A 1 7/8" FLANGWAY AT THE 3/4" POINT TO DETERMINE THE SPRING WING THROWN POSITION
- RAIL END DRILLING SHALL BE @ 9" AND 15 1/2", 3 3/32" ABOVE RAIL BASE, 1 5/16" DIA AT ALL 4 RAIL ENDS. ALL RAIL HOLE EDGES SHALL BE ROUNDED WITH A 1/8" R
- RETARDER BRACKET SHALL BE WELDED ADJACENT TO SPRING BOX ASSEMBLY
- FROG SHALL BE CONSTRUCTED TO TOLERANCES GIVEN ON LATEST AREMA PLAN 1010, PERMISSIBLE VARIATIONS IN COMPLETED FROGS
- INSERT SHALL BE EXPLOSIVE DEPTH HARDENED TO 352 BRINELL PER AREMA
- NAME TAG SHALL BE AFFIXED TO RIGID WING RAIL NEAR 1/2" PT WITH INFORMATION SHOWN
- CALTRAIN WILL CONSIDER A TAPERED HEEL SPRING OF SAME ALIGNMENT AND DIMENSIONS TO REPLACE WSM

REV	DATE	BY	CHK	APP	DESCRIPTION

<b>PENINSULA CORRIDOR JOINT POWERS BOARD</b>		<b>STANDARD DRAWINGS</b>		CADD FILE NO.: SD-2524
APPROVED BY:		SPECIAL TRACKWORK NO 10 TURNOUT		REV: 0 DATE: 093011
  ENGINEERING MANAGER      DEPUTY DIRECTOR OF ENGINEERING		 1250 San Carlos Avenue San Carlos, CA 94070		STANDARD NO.: SD-2524
SPECIAL TRACKWORK WSM FROG LH AND FROG PACK				