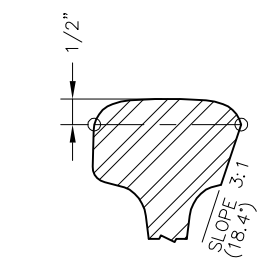
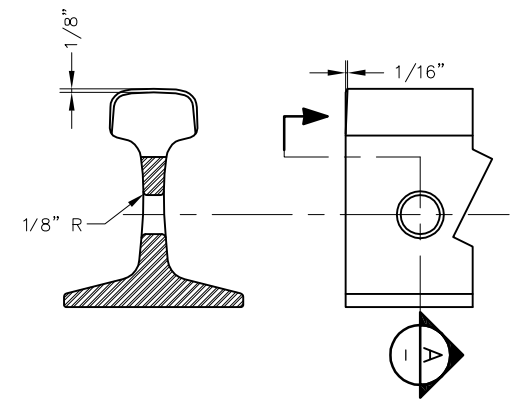
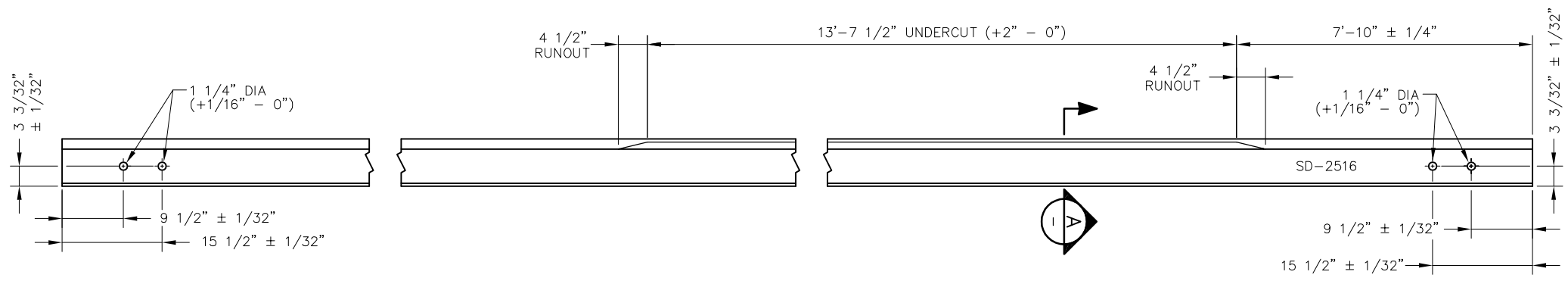
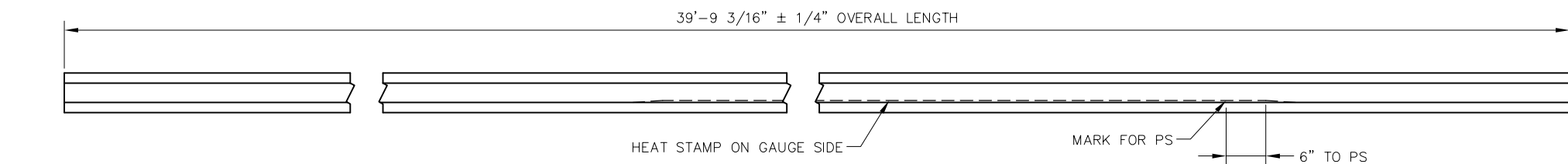
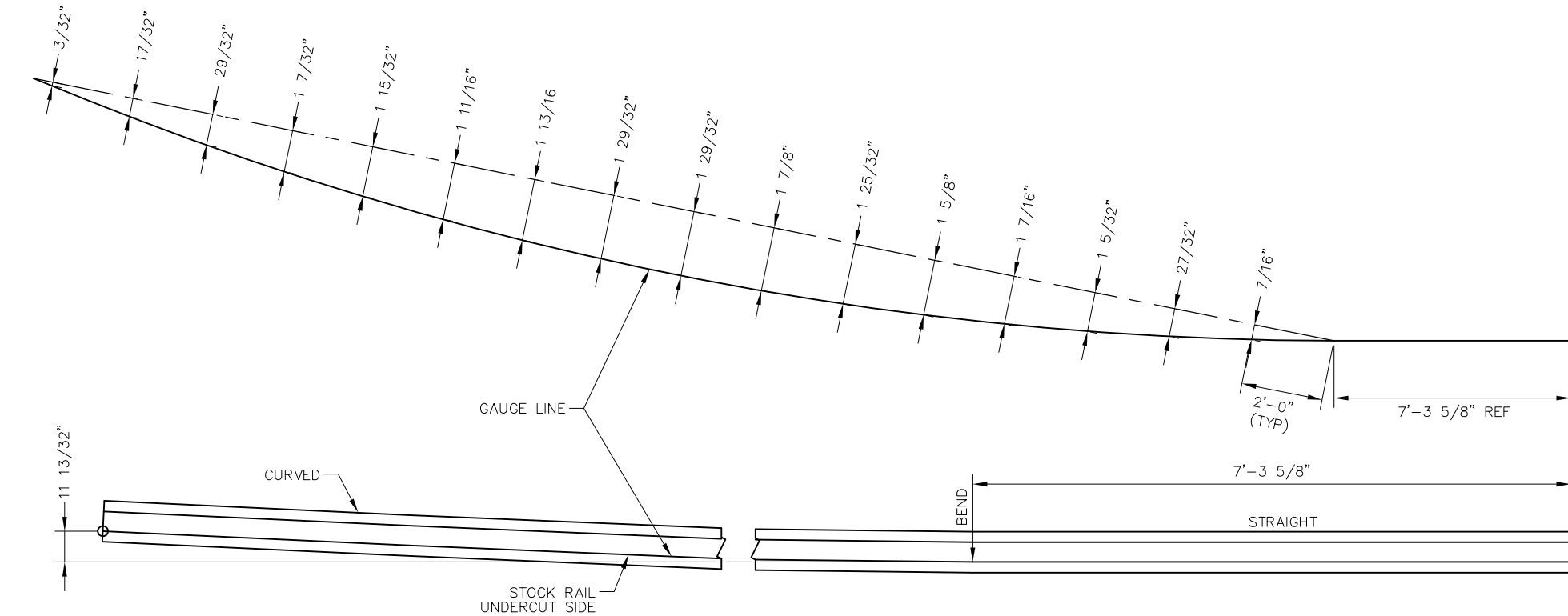


BILL OF MATERIAL		
ITEM	QTY	DESCRIPTION
1	1	RAIL, 136 LB RE 39'-9 3/16" LONG



NOTES:

1. ALL BURNING METHODS PROHIBITED
2. ALL BOLT HOLES SHALL BE BEVELED PER DETAIL
3. POINT OF SWITCH SHALL BE MARKED ON GAUGE SIDE OF WEB WITH A WHITE LINE USING WATERPROOF MARKER OR PAINT
4. WRITE CALTRAIN SD NUMBER ON WEB OF RAIL WITH WATERPROOF MARKER OR PAINT

REV	DATE	BY	CHK	APP	DESCRIPTION

PENINSULA CORRIDOR JOINT POWERS BOARD

APPROVED BY:

Bernard Anzures *Steph Chen*

ENGINEERING MANAGER DEPUTY DIRECTOR OF ENGINEERING

Caltrain

1250 San Carlos Avenue
San Carlos, CA 94070

STANDARD DRAWINGS

SPECIAL TRACKWORK
NO 10 TURNOUT
SAMSON STOCK RAIL FOR RH TURNOUT
RH CURVED 39'-9 3/16" LONG

CADD FILE NO.: SD-2516	
REV 0	DATE 093011
SPECIAL TRACKWORK	
STANDARD NO.: SD-2516	