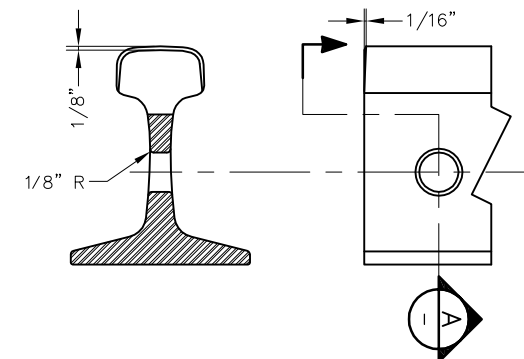
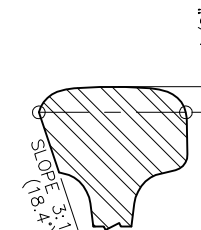
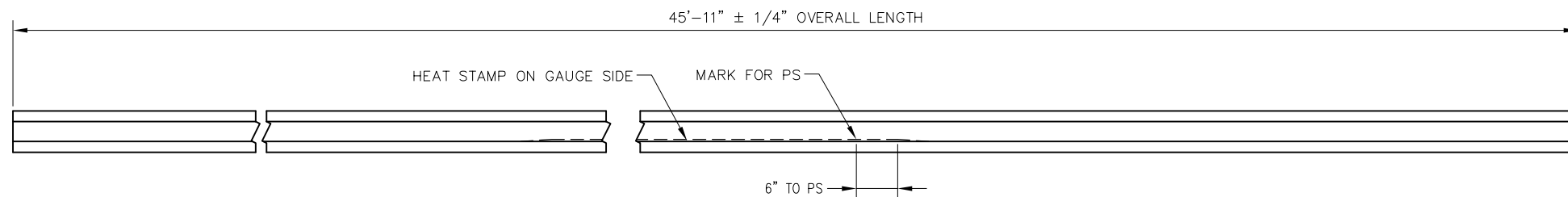


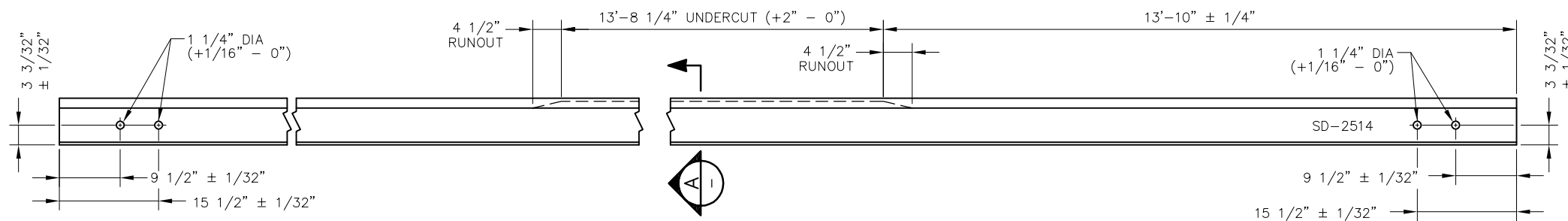
BILL OF MATERIAL		
ITEM	QTY	DESCRIPTION
1	1	RAIL, 136 LB RE 45'-11" LONG



RAIL END / HOLE BEVELING DETAILS
RAIL HEAD ONLY - NOT BASE



A PARTIAL SECTION
- NTS



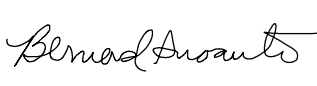

NOTES:

1. ALL BURNING METHODS PROHIBITED
2. ALL BOLT HOLES SHALL BE BEVELED PER DETAIL
3. POINT OF SWITCH SHALL BE MARKED ON GAUGE SIDE OF WEB WITH A WHITE LINE USING WATERPROOF MARKER OR PAINT
4. WRITE CALTRAIN SD NUMBER ON WEB OF RAIL WITH WATERPROOF MARKER OR PAINT


REV	DATE	BY	CHK	APP	DESCRIPTION

PENINSULA CORRIDOR JOINT POWERS BOARD

APPROVED BY:

ENGINEERING MANAGER DEPUTY DIRECTOR OF ENGINEERING



1250 San Carlos Avenue
 San Carlos, CA 94070

STANDARD DRAWINGS	
SPECIAL TRACKWORK NO 10 TURNOUT SAMSON STOCK RAIL FOR LH TURNOUT RH STRAIGHT 45'-11" LONG	
CADD FILE NO.:	SD-2514
REV	DATE
0	093011
SPECIAL TRACKWORK	
STANDARD NO.:	SD-2514