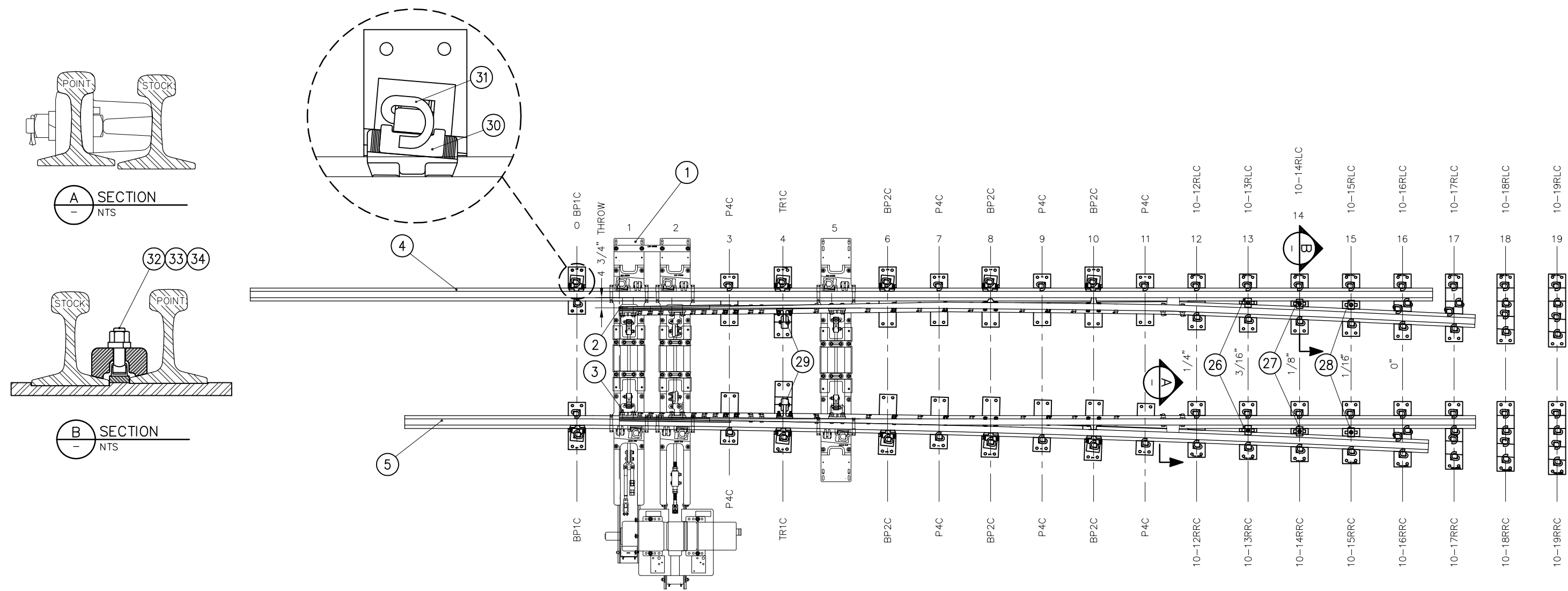


BILL OF MATERIAL			
ITEM	QTY	DESCRIPTION	DWG NO
1	1	HOLLOW SWITCH TIE & RODDING ASSEMBLY	SD-2538
2	1	SAMSON POINT, 33'-3" LONG, DOUBLE REINFORCED, UR MANG TIP, CVD, LH	SD-2511
3	1	SAMSON POINT, 33'-3" LONG, DOUBLE REINFORCED, UR MANG TIP, STR, RH	SD-2512
4	1	SAMSON STOCK RAIL, 45'-11" LONG, STRAIGHT, LH	SD-2515
5	1	SAMSON STOCK RAIL, 39'-9 3/16" LONG, CURVED, RH	SD-2516
6	2	SWITCH PLATE, BRACE (BP1C-136)	SD-2302
7	6	SWITCH PLATE, BRACE (BP2C-136)	SD-2302
8	8	SWITCH PLATE (P4C-136)	SD-2302
9	2	SWITCH PLATE, ROLLER (10-TR1C)	SD-2302
10	1	SWITCH PLATE (10-12RLC)	SD-2543
11	1	SWITCH PLATE (10-12RRC)	SD-2543
12	1	SWITCH PLATE (10-13RLC)	SD-2543
13	1	SWITCH PLATE (10-13RRC)	SD-2543
14	1	SWITCH PLATE (10-14RLC)	SD-2543
15	1	SWITCH PLATE (10-14RRC)	SD-2543
16	1	SWITCH PLATE (10-15RLC)	SD-2544
17	1	SWITCH PLATE (10-15RRC)	SD-2544

BILL OF MATERIAL			
ITEM	QTY	DESCRIPTION	DWG NO
18	1	SWITCH PLATE (10-16RLC)	SD-2544
19	1	SWITCH PLATE (10-16RRC)	SD-2544
20	1	SWITCH PLATE (10-17RLC)	SD-2544
21	1	SWITCH PLATE (10-17RRC)	SD-2544
22	1	SWITCH PLATE (10-18RLC)	SD-2545
23	1	SWITCH PLATE (10-18RRC)	SD-2545
24	1	SWITCH PLATE (10-19RLC)	SD-2545
25	1	SWITCH PLATE (10-19RRC)	SD-2545
26	2	HOLD DOWN CLIP (PC37A) "K" STYLE	-
27	2	HOLD DOWN CLIP (PC38A) "K" STYLE	-
28	2	HOLD DOWN CLIP (PC39A) "K" STYLE	-
29	2	POINT ROLLER ASSEMBLY, FLAT BACK C/W DOUBLE REINFORCED HARDWARE	-
30	10	BOLTLESS BRACE ASSEMBLY, SUREFIT, 136 LB RE C/W SERRATED WASHER	-
31	68	CLIP, PANDROL, E2055	-
32	6	T-BOLT 7/8" DIAMETER 3 3/4" LONG, GR 8	-
33	6	SPRING WASHER 7/8" DIAMETER	-
34	6	NUT, 7/8" DIAMETER HEAVY HEX GR 8	-



REV	DATE	BY	CHK	APP	DESCRIPTION

PENINSULA CORRIDOR JOINT POWERS BOARD

APPROVED BY:

Bernard Anagnostis *Steph Chen*

ENGINEERING MANAGER DEPUTY DIRECTOR OF ENGINEERING

Caltrain

1250 San Carlos Avenue
San Carlos, CA 94070

STANDARD DRAWINGS

SPECIAL TRACKWORK
NO 10 TURNOUT
RH SWITCH PACK WITH HOLLOW STEEL TIES
SWITCH MACHINE ON TURNOUT SIDE

CADD FILE NO.: SD-2508

REV	DATE
0	093011

STANDARD NO.: SD-2508