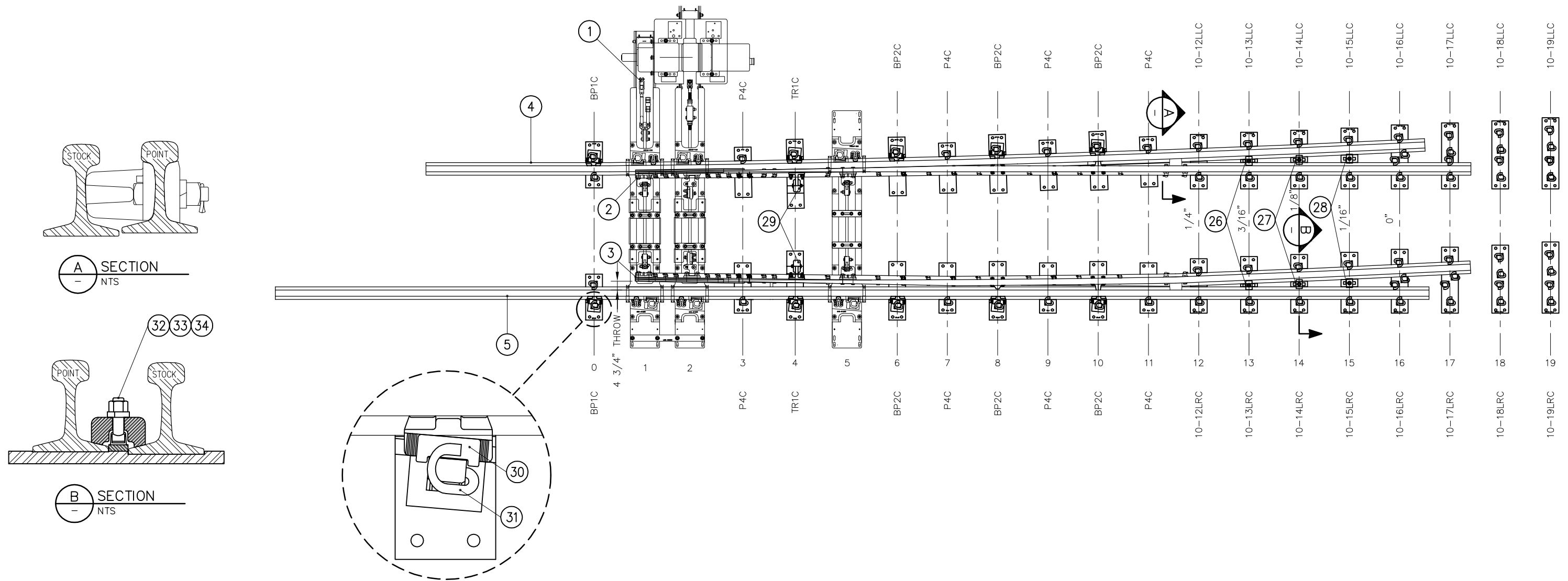


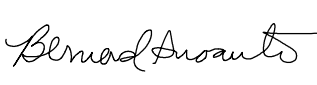

BILL OF MATERIAL				BILL OF MATERIAL			
ITEM	QTY	DESCRIPTION	DWG NO	ITEM	QTY	DESCRIPTION	DWG NO
1	1	HOLLOW SWITCH TIE & RODDING ASSEMBLY	SD-2537	18	1	SWITCH PLATE (10-16LLC)	SD-2541
2	1	SAMSON POINT, 33'-3" LONG, DOUBLE REINFORCED, UR MANG TIP, STR, LH	SD-2509	19	1	SWITCH PLATE (10-16LRC)	SD-2541
3	1	SAMSON POINT, 33'-3" LONG, DOUBLE REINFORCED, UR MANG TIP, CVD, RH	SD-2510	20	1	SWITCH PLATE (10-17LLC)	SD-2541
4	1	SAMSON STOCK RAIL, 39'-9 3/16" LONG, CURVED, LH	SD-2513	21	1	SWITCH PLATE (10-17LRC)	SD-2541
5	1	SAMSON STOCK RAIL, 45'-11" LONG, STRAIGHT, RH	SD-2514	22	1	SWITCH PLATE (10-18LLC)	SD-2542
6	2	SWITCH PLATE, BRACE (BP1C-136)	SD-2302	23	1	SWITCH PLATE (10-18LRC)	SD-2542
7	6	SWITCH PLATE, BRACE (BP2C-136)	SD-2302	24	1	SWITCH PLATE (10-19LLC)	SD-2542
8	8	SWITCH PLATE (P4C-136)	SD-2302	25	1	SWITCH PLATE (10-19LRC)	SD-2542
9	2	SWITCH PLATE, ROLLER (10-TR1C)	SD-2302	26	2	HOLD DOWN CLIP (PC37A) "K" STYLE	-
10	1	SWITCH PLATE (10-12LLC)	SD-2540	27	2	HOLD DOWN CLIP (PC38A) "K" STYLE	-
11	1	SWITCH PLATE (10-12LRC)	SD-2540	28	2	HOLD DOWN CLIP (PC39A) "K" STYLE	-
12	1	SWITCH PLATE (10-13LLC)	SD-2540	29	2	POINT ROLLER ASSEMBLY, FLAT BACK C/W DOUBLE REINFORCED HARDWARE	-
13	1	SWITCH PLATE (10-13LRC)	SD-2540	30	10	BOLTLESS BRACE ASSEMBLY, SUREFIT, 136 LB RE C/W SERRATED WASHER	-
14	1	SWITCH PLATE (10-14LLC)	SD-2540	31	68	CLIP, PANDROL, E2055	-
15	1	SWITCH PLATE (10-14LRC)	SD-2540	32	6	T-BOLT, 7/8" DIAMETER 3 3/4" LONG, GR 8	-
16	1	SWITCH PLATE (10-15LLC)	SD-2541	33	6	SPRING WASHER 7/8" DIAMETER	-
17	1	SWITCH PLATE (10-15LRC)	SD-2541	34	6	NUT, 7/8" DIAMETER HEAVY HEX, GR 8	-




REV	DATE	BY	CHK	APP	DESCRIPTION

**PENINSULA CORRIDOR JOINT POWERS BOARD**

APPROVED BY:

ENGINEERING MANAGER      DEPUTY DIRECTOR OF ENGINEERING



1250 San Carlos Avenue  
 San Carlos, CA 94070

**STANDARD DRAWINGS**

**SPECIAL TRACKWORK**  
**NO 10 TURNOUT**  
**LH SWITCH PACK WITH HOLLOW STEEL TIES**  
**SWITCH MACHINE ON TURNOUT SIDE**

CADD FILE NO:	SD-2507
REV	DATE
0	093011
SPECIAL TRACKWORK	
STANDARD NO.:	SD-2507