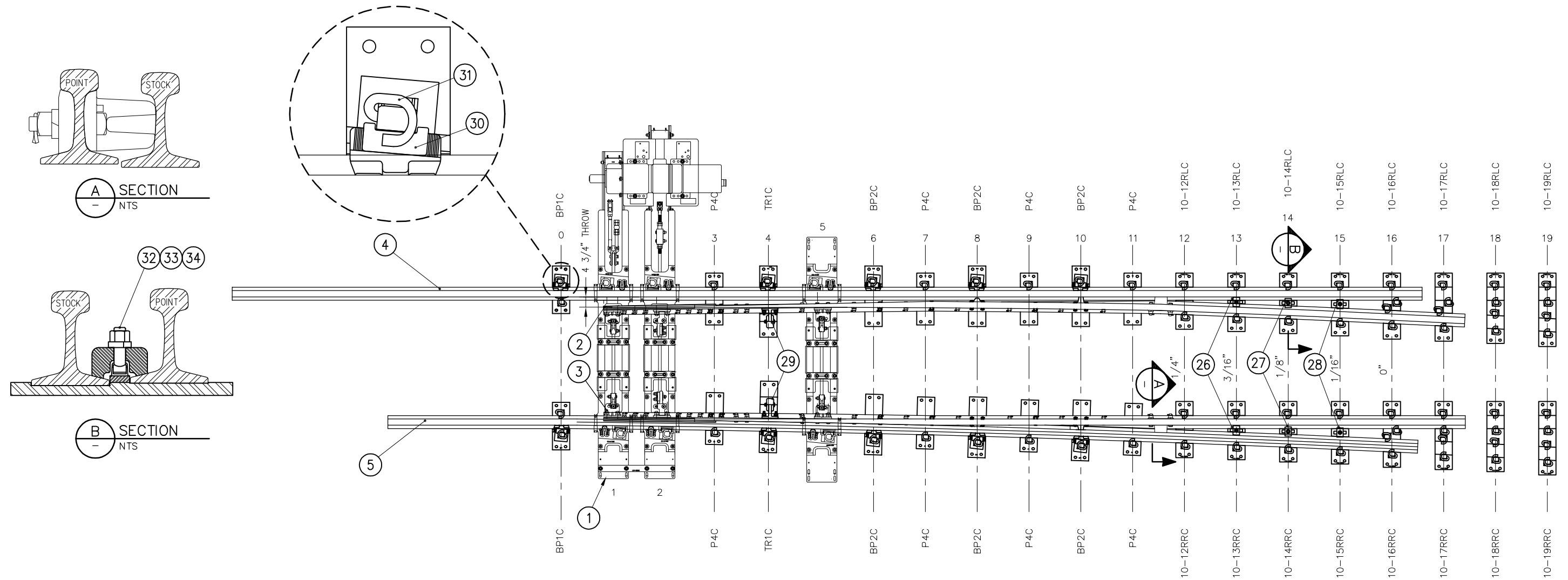


BILL OF MATERIAL				BILL OF MATERIAL			
ITEM	QTY	DESCRIPTION	DWG NO	ITEM	QTY	DESCRIPTION	DWG NO
1	1	HOLLOW SWITCH TIE & RODDING ASSEMBLY	SD-2537	18	1	SWITCH PLATE (10-16RLC)	SD-2544
2	1	SAMSON POINT, 33'-3" LONG, DOUBLE REINFORCED, UR MANG TIP, CVD, LH	SD-2511	19	1	SWITCH PLATE (10-16RRC)	SD-2544
3	1	SAMSON POINT, 33'-3" LONG, DOUBLE REINFORCED, UR MANG TIP, STR, RH	SD-2512	20	1	SWITCH PLATE (10-17RLC)	SD-2544
4	1	SAMSON STOCK RAIL, 45'-11" LONG, STRAIGHT, LH	SD-2515	21	1	SWITCH PLATE (10-17RRC)	SD-2544
5	1	SAMSON STOCK RAIL, 39'-9 3/16" LONG, CURVED, RH	SD-2516	22	1	SWITCH PLATE (10-18RLC)	SD-2545
6	2	SWITCH PLATE, BRACE (BP1C-136)	SD-2302	23	1	SWITCH PLATE (10-18RRC)	SD-2545
7	6	SWITCH PLATE, BRACE (BP2C-136)	SD-2302	24	1	SWITCH PLATE (10-19RLC)	SD-2545
8	8	SWITCH PLATE (P4C-136)	SD-2302	25	1	SWITCH PLATE (10-19RRC)	SD-2545
9	2	SWITCH PLATE, ROLLER (10-TR1C)	SD-2302	26	2	HOLD DOWN CLIP (PC37A) "K" STYLE	-
10	1	SWITCH PLATE (10-12RLC)	SD-2543	27	2	HOLD DOWN CLIP (PC38A) "K" STYLE	-
11	1	SWITCH PLATE (10-12RRC)	SD-2543	28	2	HOLD DOWN CLIP (PC39A) "K" STYLE	-
12	1	SWITCH PLATE (10-13RLC)	SD-2543	29	2	POINT ROLLER ASSEMBLY, FLAT BACK C/W DOUBLE REINFORCED HARDWARE	-
13	1	SWITCH PLATE (10-13RRC)	SD-2543	30	10	BOLTLESS BRACE ASSEMBLY, SUREFIT, 136 LB RE C/W SERRATED WASHER	-
14	1	SWITCH PLATE (10-14RLC)	SD-2543	31	68	CLIP, PANDROL, E2055	-
15	1	SWITCH PLATE (10-14RRC)	SD-2543	32	6	T-BOLT 7/8" DIAMETER 3 3/4" LONG, GR 8	-
16	1	SWITCH PLATE (10-15RLC)	SD-2544	33	6	SPRING WASHER 7/8" DIAMETER	-
17	1	SWITCH PLATE (10-15RRC)	SD-2544	34	6	NUT, 7/8" DIAMETER HEAVY HEX GR 8	-



REV	DATE	BY	CHK	APP	DESCRIPTION

PENINSULA CORRIDOR JOINT POWERS BOARD

APPROVED BY:




ENGINEERING MANAGER DEPUTY DIRECTOR OF ENGINEERING



1250 San Carlos Avenue
 San Carlos, CA 94070

STANDARD DRAWINGS

SPECIAL TRACKWORK
NO 10 TURNOUT
RH SWITCH PACK WITH HOLLOW STEEL TIES
SWITCH MACHINE ON MAINLINE SIDE

CADD FILE NO.:	SD-2506
REV	DATE
0	093011
SPECIAL TRACKWORK	
STANDARD NO.:	SD-2506