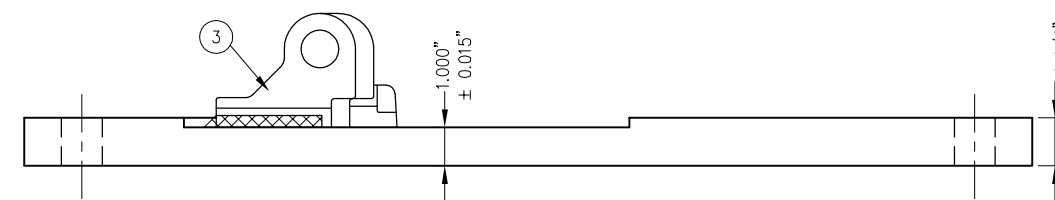
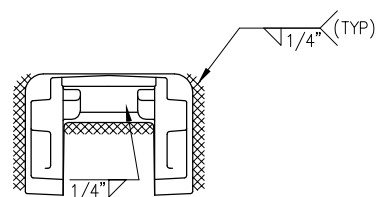


HTP-204-L



HTP-205-R



TYPICAL FASTCLIP WELD-ON  
CAST SHOULDER WELDING DETAILS

BILL OF MATERIAL				
ITEM	QTY FOR HTP-204-L	QTY FOR HTP-205-R	DESCRIPTION	DWG NO
1	1	1	BURNED SWITCH PLATE, 1 1/4" THICK	-
2	1	1	WELD-ON FASTCLIP SHOULDER	-
3	1	1	LV BRACE RETENTION BLOCK	-

**NOTES:**

1. I.D. CHARACTERS SHALL BE 5/8" MINIMUM HEIGHT CLEARLY STAMPED AS SHOWN
2. SLOTTED HOLE CENTERS ARE INDICATED ON DRAWING

**PENINSULA CORRIDOR JOINT POWERS BOARD**

**STANDARD DRAWINGS**

REV	DATE	BY	CHK	APP	DESCRIPTION

APPROVED BY:

*Bernard Anzures*      *Steph Chen*

ENGINEERING MANAGER      DEPUTY DIRECTOR OF ENGINEERING



SPECIAL TRACKWORK  
GENERAL ELEMENTS  
SWITCH PLATES FOR HOLLOW STEEL TIES  
PLATES HTP-204-L AND HTP-205-R

CADD FILE NO.:		SD-2310
REV	DATE	093011
0		
SPECIAL TRACKWORK		
STANDARD NO.:		SD-2310